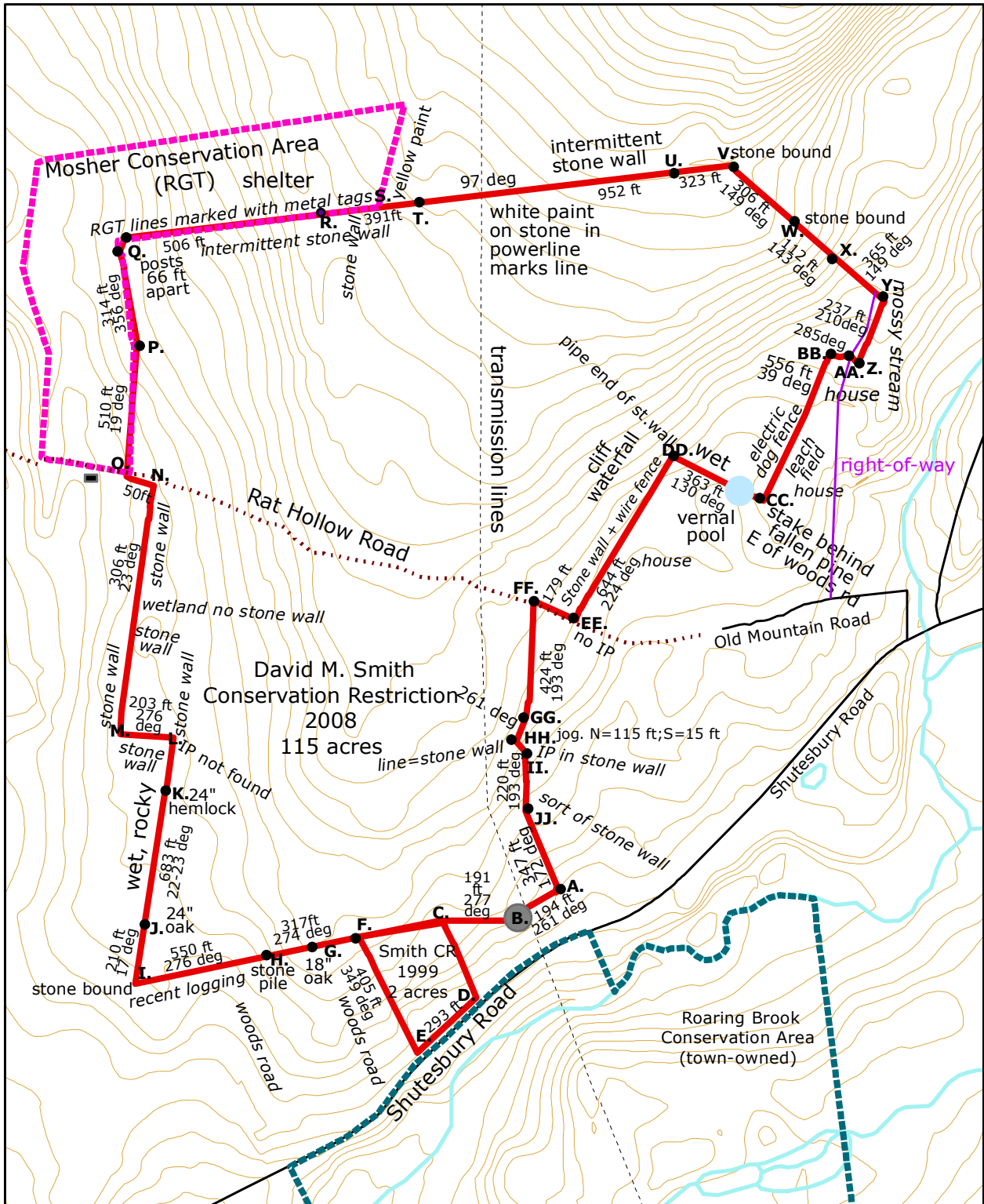


Smith Conservation Restriction



Land owned or CR

- Rattlesnake Gutter Trust
- Town of Leverett

B. Iron pipe at S. end of power line: was embedded in juniper bush is now somewhere in pile of rocks which are overgrown/hard to find 42.4455, -72.4735

All corners have Iron/metal posts unless otherwise noted.

