

FOR REGISTRY USE ONLY

REMAINING SECTION OF LOCUS PARCEL NOT ENCUMBERED BY A CONSERVATION RESTRICTION AREA=22.134 ACRES

PORTION OF LOCUS PARCEL TO BE PLACED UNDER CONSERVATION RESTRICTION AREA=16.517 ACRES

LOCUS IS LAND OF TRUSTEES OF THE ROBERT T.E. SCHUYLER TRUST BOOK 3723 PAGE 194 TOTAL AREA=38.651 ACRES

LEGEND

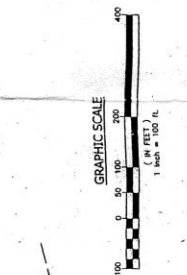
- PROPERTY LINE
- RESTRICTION LINE
- CONSERVATION RESTRICTION LINE
- EASEMENT LINE
- BOUNDARY FORCE LINE
- SHRUB, MEDIUM (3'-4' TALL)
- UNMARKED POINT
- DOT POLYLINE
- WELL
- PIES WITH BARRIED WIRE FORCE REMAINS

PLAN OF LAND IN LEVERETT (FRANKLIN COUNTY), MA SHOWING CONSERVATION RESTRICTION SURVEYED FOR EVELYN SCHUYLER

SVE Associates

Surveyors
 7 Park Street, Leverett, MA 01836 Phone (413) 774-4888 Fax (413) 774-4888
 120 Main Street, North Andover, MA 01855 Phone (978) 855-5555

DATE: 11/29/02 SCALE: 1"=100' REGD. CIVIL ENGR. NO. 1000



CERTIFICATION

THE PROPERTY LINES SHOWN ARE THE LINES DETERMINED BY THE SURVEYOR FROM THE RECORDS OF THE REGISTERED DEEDS AND THE RECORDS OF THE REGISTERED EASEMENTS AND THE RECORDS OF THE REGISTERED CONSERVATION RESTRICTIONS AND THE RECORDS OF THE REGISTERED EASEMENTS AND THE RECORDS OF THE REGISTERED CONSERVATION RESTRICTIONS AND THE RECORDS OF THE REGISTERED EASEMENTS AND THE RECORDS OF THE REGISTERED CONSERVATION RESTRICTIONS.

Richard A. Ruggie, P.L.S.
 RICHARD A. RUGGIE, P.L.S.

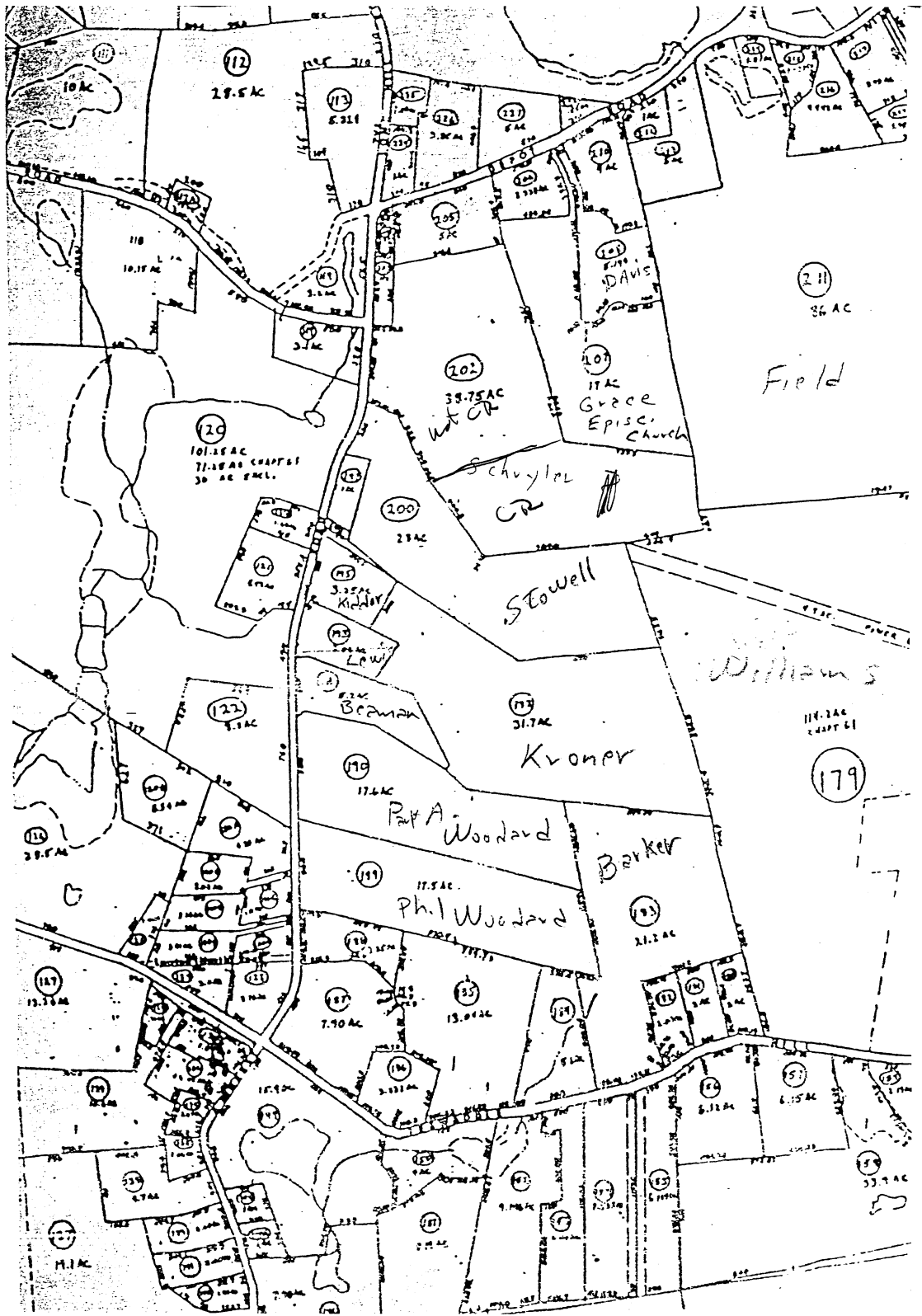
MAP REFERENCES

1. PLAN OF LAND IN LEVERETT, MASSACHUSETTS, PROPERTY OF FRANKLIN COUNTY, BOOK 3723, PAGE 194.
2. PLAN OF LAND IN LEVERETT, MASSACHUSETTS, PROPERTY OF FRANKLIN COUNTY, BOOK 3723, PAGE 194.
3. PLAN OF LAND IN LEVERETT, MASSACHUSETTS, PROPERTY OF FRANKLIN COUNTY, BOOK 3723, PAGE 194.
4. PLAN OF LAND IN LEVERETT, MASSACHUSETTS, PROPERTY OF FRANKLIN COUNTY, BOOK 3723, PAGE 194.

NOTES

1. THE SURVEY WAS MADE FROM THE RECORDS OF THE REGISTERED DEEDS AND THE RECORDS OF THE REGISTERED EASEMENTS AND THE RECORDS OF THE REGISTERED CONSERVATION RESTRICTIONS AND THE RECORDS OF THE REGISTERED EASEMENTS AND THE RECORDS OF THE REGISTERED CONSERVATION RESTRICTIONS AND THE RECORDS OF THE REGISTERED EASEMENTS AND THE RECORDS OF THE REGISTERED CONSERVATION RESTRICTIONS.
2. THE SURVEY WAS MADE FROM THE RECORDS OF THE REGISTERED DEEDS AND THE RECORDS OF THE REGISTERED EASEMENTS AND THE RECORDS OF THE REGISTERED CONSERVATION RESTRICTIONS AND THE RECORDS OF THE REGISTERED EASEMENTS AND THE RECORDS OF THE REGISTERED CONSERVATION RESTRICTIONS AND THE RECORDS OF THE REGISTERED EASEMENTS AND THE RECORDS OF THE REGISTERED CONSERVATION RESTRICTIONS.
3. THE SURVEY WAS MADE FROM THE RECORDS OF THE REGISTERED DEEDS AND THE RECORDS OF THE REGISTERED EASEMENTS AND THE RECORDS OF THE REGISTERED CONSERVATION RESTRICTIONS AND THE RECORDS OF THE REGISTERED EASEMENTS AND THE RECORDS OF THE REGISTERED CONSERVATION RESTRICTIONS AND THE RECORDS OF THE REGISTERED EASEMENTS AND THE RECORDS OF THE REGISTERED CONSERVATION RESTRICTIONS.
4. THE SURVEY WAS MADE FROM THE RECORDS OF THE REGISTERED DEEDS AND THE RECORDS OF THE REGISTERED EASEMENTS AND THE RECORDS OF THE REGISTERED CONSERVATION RESTRICTIONS AND THE RECORDS OF THE REGISTERED EASEMENTS AND THE RECORDS OF THE REGISTERED CONSERVATION RESTRICTIONS AND THE RECORDS OF THE REGISTERED EASEMENTS AND THE RECORDS OF THE REGISTERED CONSERVATION RESTRICTIONS.

Schuyler, Building Envelope and CR, map 7, lot 201



Note:

There are two sets of boundary photos for the Schuyler Conservation Restriction

The first set was taken with a film camera in 2003.

The second set was taken with a digital camera in 2012.

When doing the monitoring of the Schuyler CR, use the excel file and photos done in 2012.

Schuyler baseline photo log								
date	photog	roll.#	location	azim. m/?	latitude	longitude	lat/long	notes for future monitors
4/15/2003	MAW	1.01	view of stone-lined "well" (10 feet diameter), 75 feet from corner, 6 feet in from line	255 m				water about 3 feet down
4/15/2003	MAW	1.02	NW corner, very small metal pipe at end of short stone wall	157 m	42.44391	-72.50212		
4/15/2003	MAW	1.03	NW corner toward dead tree	135 m				
4/15/2003	MAW	1.04	along west edge, following line, neighbors logging, take 200 feet from NW corner	155 m				
4/15/2003	MAW	1.05	same place, Schuyler side	130 m				
4/15/2003	MAW	1.06	one of old field pine along Schuyler side of line at first of "double corner" (SW corner) back	60 m				lot line follows break in slope
4/15/2003	MAW	1.07	along line	354 m	42.44334	-72.50661		
4/15/2003	MAW	1.09	SW corner forward along line	120 m				
4/15/2003	MAW	1.10	ledge, looking to other ledge, 70 feet from second of the double-corner (SW)	350 m				
4/15/2003	MAW	1.11	wet area (probably not vernal pool) partially on Schuyler side, 250 feet from SW corner	400 m				about 20 feet across at most
4/15/2003	MAW	1.12	looking into Schuyler property, 290 feet from SW corner	37 m				
4/15/2003	MAW	1.13	red oak on property line, 465 from SW corner					this line slightly farther down on break in slope
4/15/2003	MAW	1.14	2 red oaks, barbed wire along edge, 500 feet from SW corner	261 m				small wet area downslope, off property
4/15/2003	MAW	1.15	along line toward power line at high point just before very steep slope, 550 from SW corner	100 m				
4/15/2003	MAW	1.16	along line in opposite direction	290 m				
4/19/2003	MAW	3.01	farm dump about 20 feet across, 60 feet to top, 50 feet in from power line	320 m				
4/15/2003	MAW	1.17	upper edge of farm dump, power line just to right	320 m				
4/18/2003	MAW	3.02	looking north on power line from line	322 m				
4/15/2003	MAW	1.20	along power line as it turns, can see ELM from edge of power line right-of-way looking into	121 m				
4/19/2003	MAW	3.03	hemlocks along line	89 m				
4/15/2003	MAW	1.23	Virginia Rail fence line along property line, 100 feet beyond power line right of way edge	89 m				
4/15/2003	MAW	1.25	SE corner		42.44391	-72.50212		
4/15/2003	MAW	2.01	looking ahead along stone wall from SE corner, large red oak	5 m				
4/15/2003	MAW	2.02	back along line from corner from SE corner	240 m				
4/15/2003	MAW	2.03	looking into property from SE corner area	318 m				
4/15/2003	MAW	2.05	barbed wire in small white pine and large shag-bark hickory, at intersection with Williams/Field on line, back toward corner, standing on stone	180 m				
4/15/2003	MAW	2.06	pile (from farming), 35 feet beyond corner	202 m				
4/15/2003	MAW	2.08	picture of NE corner (surveyor's tape continues, turn instead)	m	42.44497	-72.50239		
4/15/2003	MAW	2.09	from NE corner, back along line	185 m				
4/15/2003	MAW	2.10	from NE corner toward power line (along property line), has barbed/VA rail fence	298 m				
4/15/2003	MAW	2.11	high point of land, toward power line, 200 feet to next corner, has barbed, VA rail fence	257 m				
4/15/2003	MAW	2.12	on line before power line, change from hemlock to pine, 100 feet to next corner	257 m				
4/15/2003	MAW	2.15	at change in direction, pipe	m				
4/15/2003	MAW	2.16	in power line, small stone wall, stone wall bearing 284, CR line bearing 271	271 m				line from here on not old fence line, hard to follow
4/15/2003	MAW	2.18	on power line looking south	142 m				
4/19/2003	MAW	3.04	further south near next power pole, difference in Schuyler maintained power line					
4/19/2003	MAW	3.06	looking back through deciduous line from open area, 125 feet south of edge of lawn	91 m				
5/12/2005	MAW	dig	Porcupine, south border west of power line					



1.01 view of stone-lined "well" (10 feet diameter), 75 feet from corner, 6 feet in from line 255



1.02 NW corner, metal pipe at end of short stone wall 157

135

1.03 NW corner toward dead tree



155

1.04 along west edge, following line, neighbors logging, lake 200 feet from NW corner





130

1.05 same place, Schuyler side



60

1.06 one of old field pine along Schuyler side of line

354

at first of "double corner" (SW corner) back along
1.07 line



120

1.09 SW corner forward along line





1.10 ledge, looking to other ledge, 70 feet from
350
1.10 second of the double-corner (SW)



1.11 wet area (probably not vernal pool) partially on
400
1.11 Schuyler side, 250 feet from SW corner

1.12 looking into Schuyler property, 290 feet from SW corner

37



1.13 red oak on property line, 465 from SW corner

