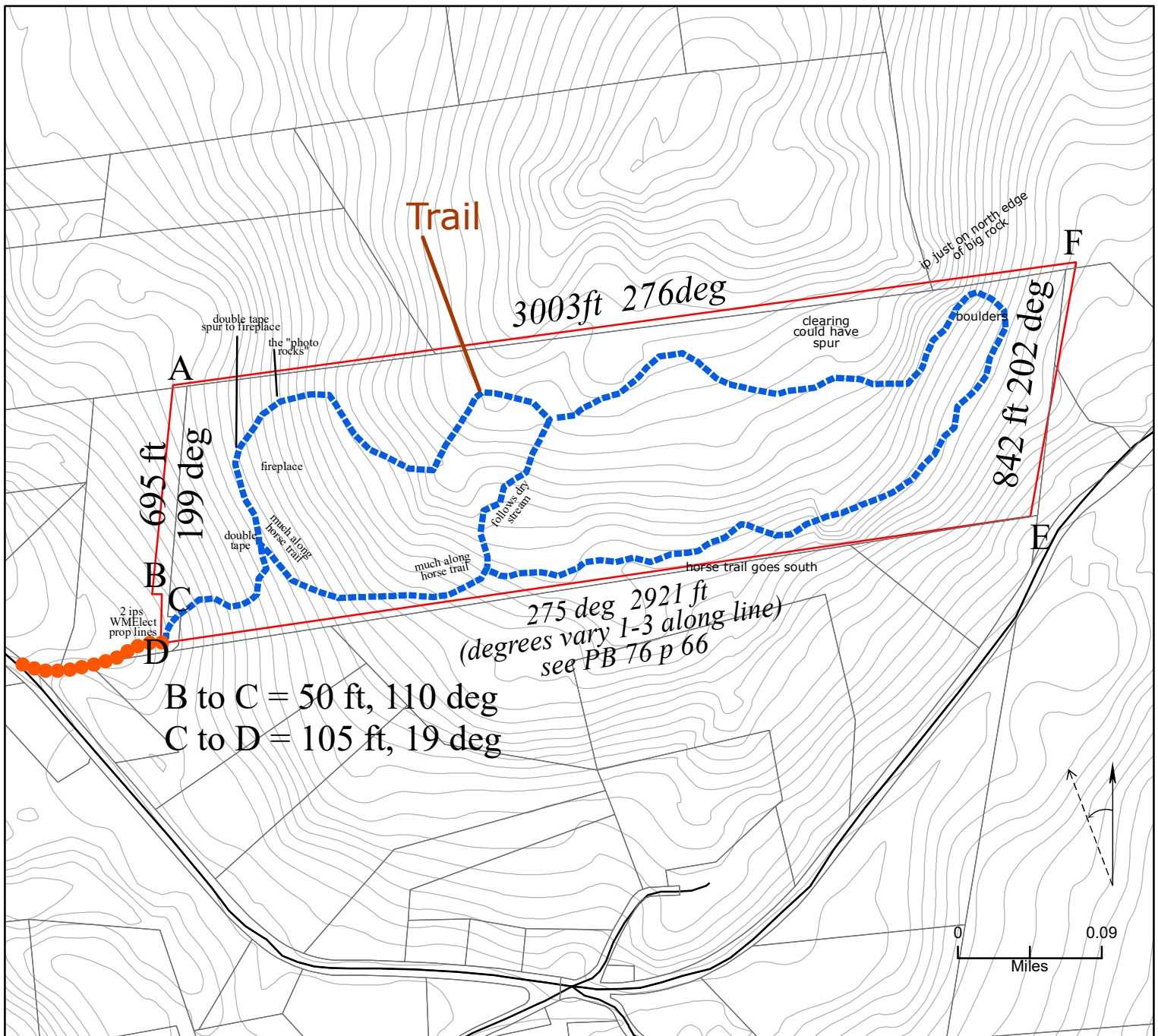


# Dan Glazier Forest Monitoring Map



- A. NW corner, cement post 42.49987, -72.47332
- B. Notch corner, cement post, 42 49800, -72.47362
- C. Inside notch, 42.49810, -72.47354 notch for utility when Montague Nuclear was being planned
- D. SW Corner, double cement posts 42.49758, -72.47322
- E. No post at SE corner
- F. NE corner, stone marker, 42.50124, -72.46207

Compass and Distances derived from

1. survey for Perry Glazier Lots by Stan Bernotas, May 1970 (can't find 2015)
2. plan for SW corner W.Mass Electric, PB 54, p 77
3. survey of south line PB 76 p66