

Trail Information: Rattlesnake Gutter

Directions:

From the Leverett Town Hall, turn right/north on Montague Road. Go past the library and school to Rattlesnake Gutter Road. Turn right and park in the pull-offs before the gate (2 miles from Town Hall).



Or from the Leverett Co-op, take Rattlesnake Gutter Road to the Paul C. Jones Working Forest kiosk. There is some

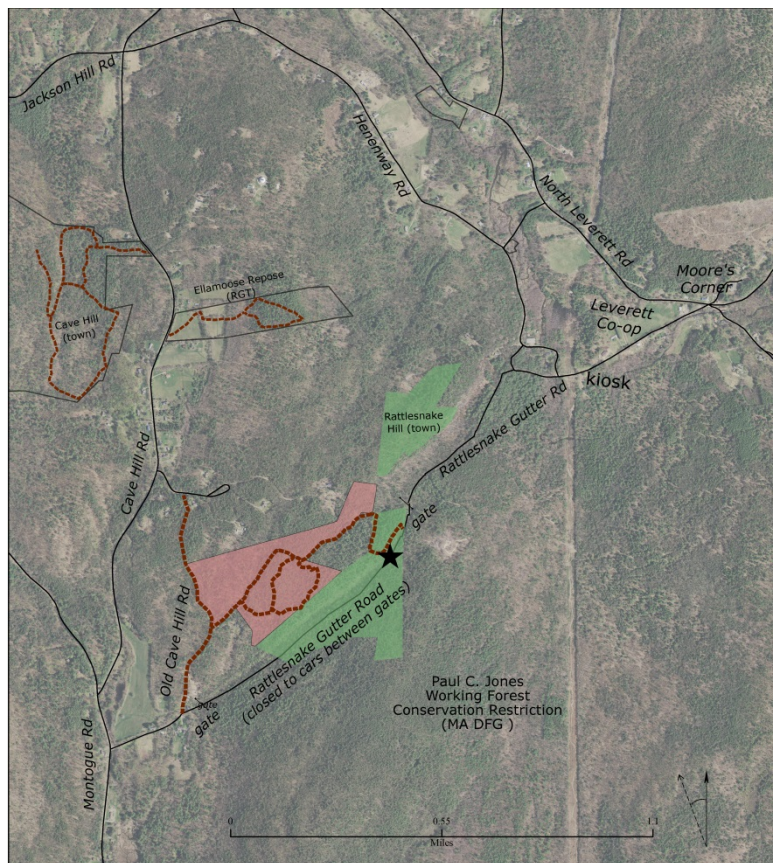
pull off parking farther along the road before you get to the gate.

The Gutter itself is spectacular glacial ravine that probably formed when either glacial meltwater or a temporary glacial lake exploited a fracture in the crust that had constrained the flow of water.

Who takes care of these trails?

The Town of Leverett is responsible for Rattlesnake Gutter Road. The trails are maintained by the Leverett Trails Committee, which is co-sponsored by the Leverett Conservation Commission and the Rattlesnake Gutter Trust.

We thank all those who have so generously donated their time. We invite you to join us! Contact concom@leverett.ma.us or info@rattlesnakeguttertrust.org



- = trail
- = Rattlesnake Gutter Conservation Area (town owned)
- = Whitney Road Conservation Area (RGT owned)
- = Marvell Family Conservation Area (RGT owned)
- ★ = poetry box

