

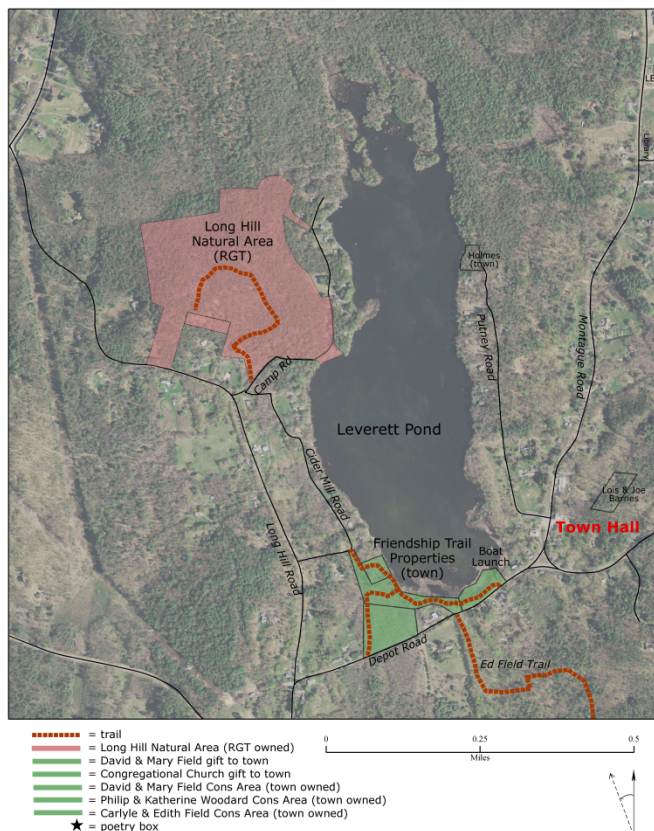
Trail Information: Long Hill Natural Area

Directions:

From Town Hall, turn left/south and then bear right so that you go along the south edge of Leverett Pond. At the stop sign, turn right on Long Hill Road. Continue for 0.5 miles, turn right on Camp Road (private road, please be considerate). The Long Hill Natural Area is almost immediately on your left. There are pull-offs along that section of the road.



Or park across from the Boat Launch, follow the Friendship Trail to Cider Mill Road (private road, please be considerate) to Long Hill and the directions above.



The trail to the top takes the hiker through woodlands. This hill, like many places in the area, has hemlocks dying from wooly adelgid. The dead hemlocks are creating openings in the forest. Look for the young plants taking advantage of this new-found sunlight. A poetry notebook, a bench and the view await you at the top

Who takes care of these trails?

The Long Hill Natural Area is owned by the Rattlesnake Gutter Trust. Neighbors do most of the trail maintenance. The Leverett Trails Committee, which is co-sponsored by the Leverett Conservation Commission and the Rattlesnake Gutter Trusts thanks them for their stewardship.

If you are interested in helping with this or other trails, contact concom@leverett.ma.us or info@rattlesnakeguttertrust.org

