

Schuyler photographs continued



2 red oaks, barbed wire along edge, 500 feet  
1.14 from SW corner 261



along line toward powerline at high point just  
1.15 before very steep slope, 350 from SW corner 100

1.16 along line in opposite direction 290

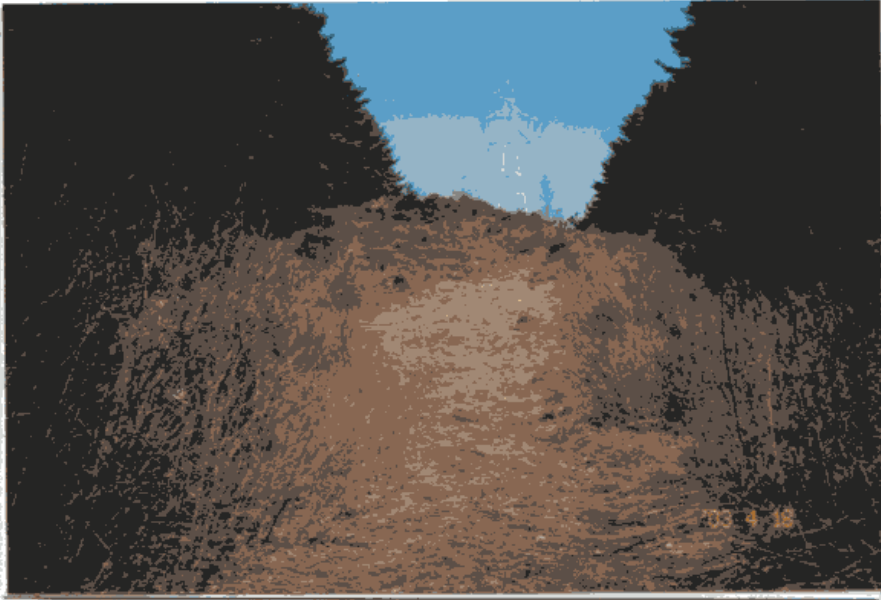


320 farm dump about 20 feet across, 60 feet to top, 3.01 50 feet in from powerline



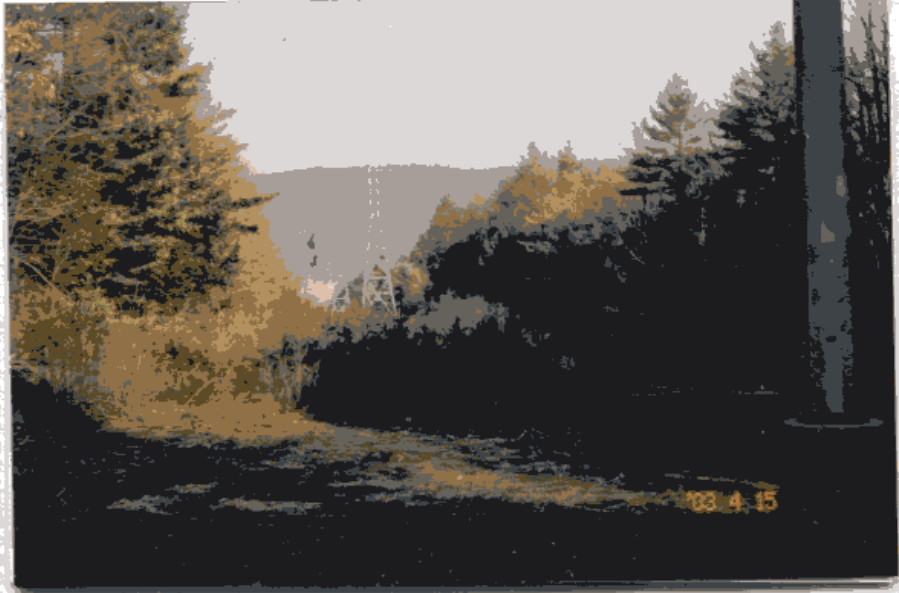


1.17 upper edge of farm dump, power line just to right 320



3.02 looking north on power line from line 322

1.20 along powerline as it turns, can see ELM 121



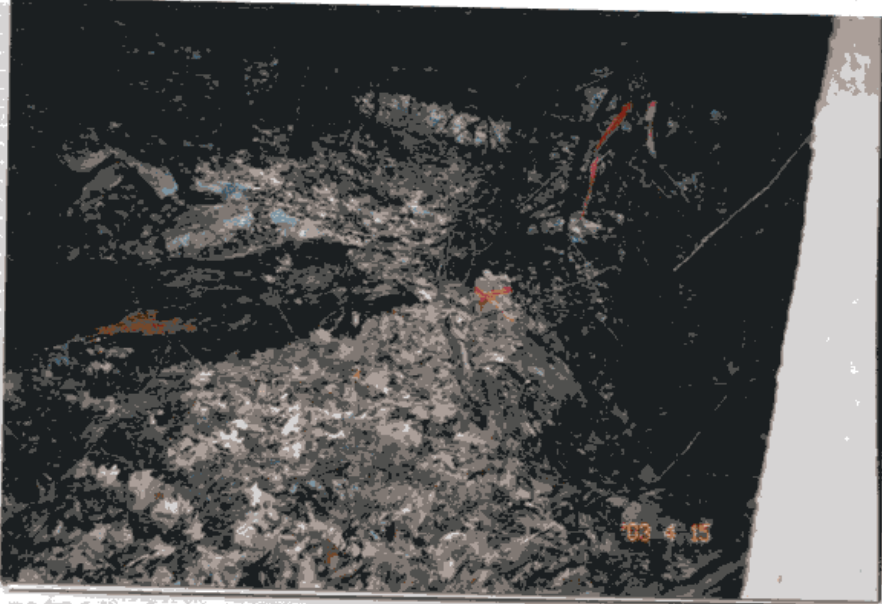
from edge of power line right-of-way looking into 89  
3.03 hemlocks along line







Virginia Rail fence line along property line, 100  
1.23 feet beyond power line right of way edge 89



1.25 SE corner

2.02 back along line from corner from SE corner

240



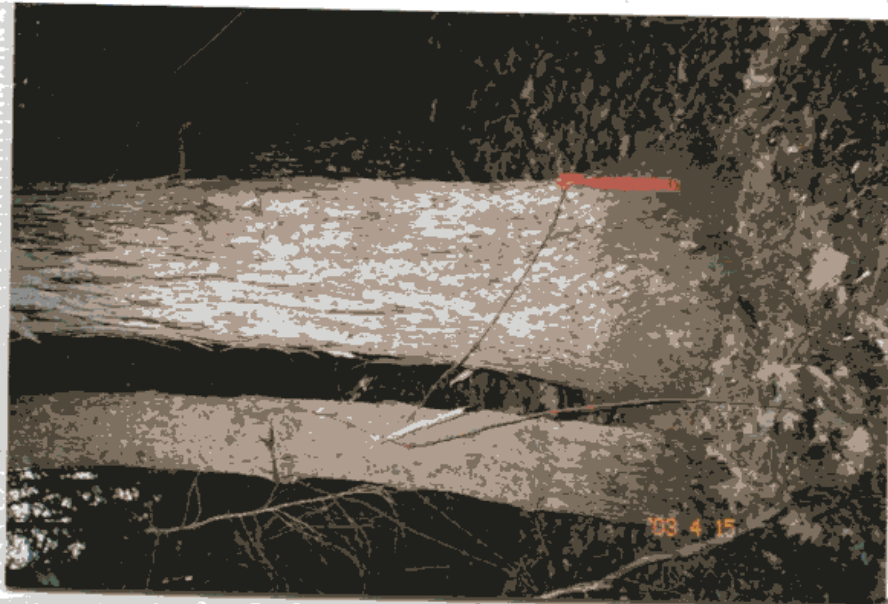
2.01 looking ahead along stone wall from SE corner, large red oak

5





2.03 looking into property from SE corner area 318



barbed wire in small white pine and large shag-barked hickory, at intersection with Williams/Field 160



on line, back toward corner, standing on stone  
2.06 pile (from farming). 35 feet beyond corner

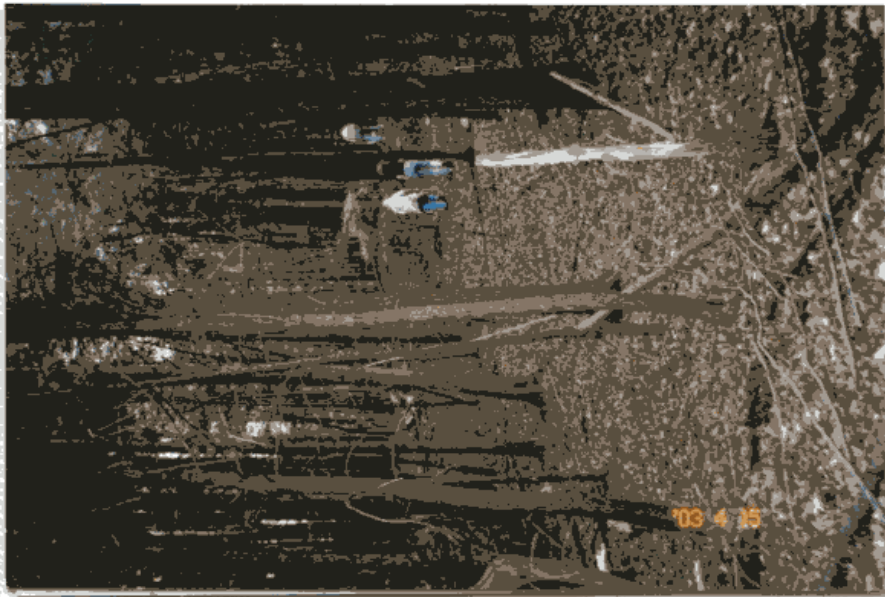
202



picture of NE corner (surveyor's tape continues,  
2.08 turn instead)







2.10 from NE corner toward power line (along property line), has barbed/wa rail fence

298



2.09 from NE corner, back along line

185

2.11 high point of land, toward powerline, 200 feet to next corner, has barbed, VA rail fence

257



2.12 on line before powerline, change from hemlock to pine, 100 feet to next corner

257





2.15 at change in direction, pipe



2.16 in powerline, small stone wall, stone wall bearing 271



142

2.18 on powerline looking south



3.04 further south near next power pole, difference in Schuyler maintained power line





91  
looking back through deciduous line from open  
3.06 area, 125 feet south of edge of lawn



Porcupine, southern border of Schuyler CR, 4/12/05