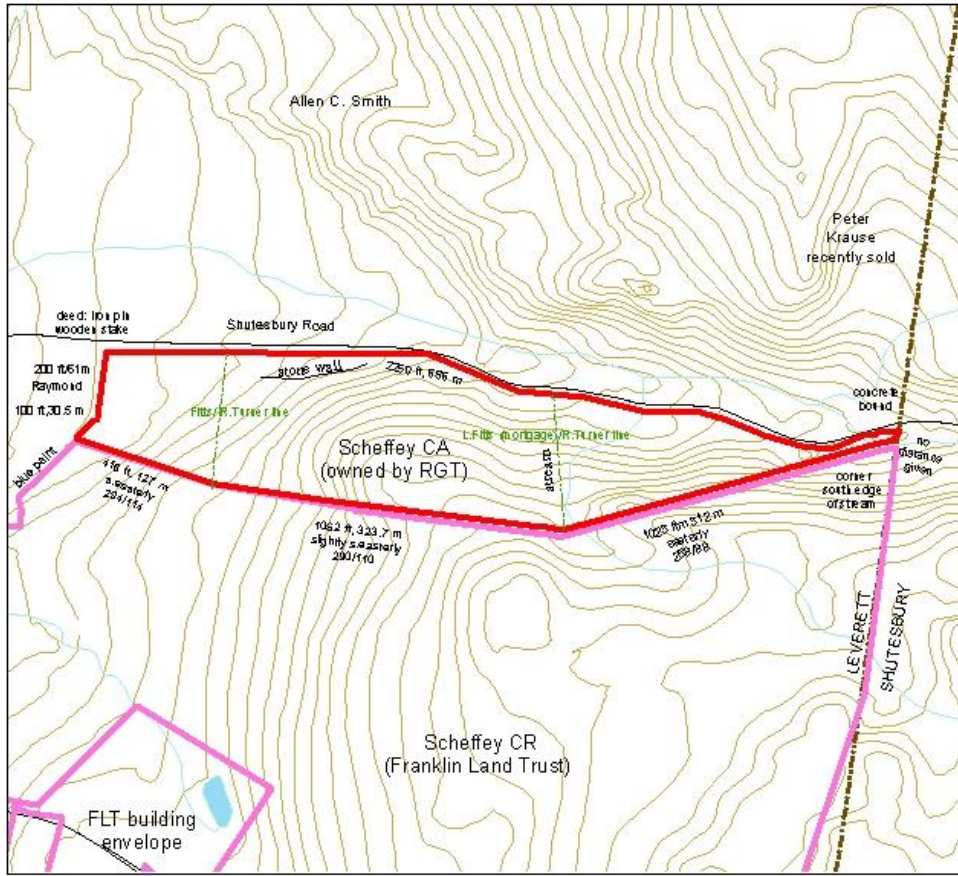


Scheffey Conservation Area, part 2

Schetty																			
Boundary and photo reference (note XY projection and comment (date) added from new garmin gps to help others use shape files)																			
date	sequence	Latitude	Longitude	GPS acc in feet	Y_PROJ	X_PROJ	COMMENT	monuments	line marked by	angle (degrees) from previous point	length (feet) from previous point	other descriptors	confidence in boundary markings?	recommendations	habitat, vegetation, geology?	photo # on word file	photo date (see photo log baseline)	digital # (see photo log baseline)	
3/19/2010	NE corner	42.44967168	-72.45112717		911451.39584009	121759.33901777	19-MAR-10 2:12:13PM	brook edge, ne corner	edge of book		2250 along road 1023 from brook	across stream from townline mark	high		brook	001, 002	11/1/2009	002, 005	
4/2/2010	back S E c	42.44882050	-72.45478654		911360.21660655	121457.26965307	02-APR-10 11:40:27AM	corner Turner and L Fitts	w edge of stream	268 from hillock		22 m n to e/w wood road by farm fence	high		at stream	010, 011, 012	11/1/2009 4/2/2010	022, 024, 002	
4/2/2010	back S W c	42.44907774	-72.45870718		911392.40643633	121135.08415244	02-APR-10 12:22:28PM	fitts (mortgage) turner cor			1062		high			016	4/2/2010	005	
3/21/2010	S W corner	42.44956054	-72.46036160		911447.56303316	120999.59816251	21-MAR-10 8:32:30AM	sw corner by farm pond	fence/pond	308/128	416	s bend in fence	high		fenced pasture	022, 023	11/1/2009	041, 043	
3/19/2010	S Mid point	42.44973857	-72.46016772		911467.15764172	121015.76888618	19-MAR-10 3:25:34PM	turn in w line by fence	fence	northerly	100		high	Mr Raymond allowed right of way by Andy Sheffey. Just keep record of use	fenced pasture	024	11/1/2009	040	
3/19/2010	NE corner W edge	42.45032891	-72.46001953		911532.59072231	121028.69665389	19-MAR-10 3:27:05PM	nw corner at road, wd st	road	northerly	200	stone wall corner marked by wooden stake	high		farm buildings	025, 026, 027	11/1/2009	044, 045, 046	
3/19/2010	stone wall E end	42.45009405	-72.45830560		911504.91889436	121169.38576153	19-MAR-10 3:33:32PM	near road Turner piece											note: not pictures, should be take
3/19/2010	stone wall	42.45021164	-72.45707707		911516.84518205	121270.58752336	19-MAR-10 3:37:47PM	near road Turner piece											



**Scheffey Conservation Area (RGT)
for Monitoring**



NE corner: 42.4497, -72.4511
 back S E corner: 42.4488, -72.4548
 back S W corner: 42.4491, -72.4587
 S W corner: 42.4496, -72.4604
 S Mid point: 42.4497, -72.4602
 NE corner: 42.4503, -72.4600

W edge stone wall: 42.4501, -72.4583
 E end stone wall: 42.4502, -72.45717

South and East boundary blazed with red paint, 4/2/2010

Scheffey								
photo baseline log								
date	photo grapher	roll # or word album #	jpeg #	location	azimuth (m)	latitude	longitude	notes for future monitors
5/9/2003		(none)		Leverett-Shutesbury town line (ne corner)	to next: 274	42.44967	-72.45124	lots of trees, GPS read 30-40 off each time
5/9/2003	MAW	1.09		walking line along side hill	274			
5/9/2003	MAW	1.10		corner by stream	to next:249	42.44873	-72.45502	
5/9/2003	MAW	1.11		looking downstream				
5/9/2003		(none)		next "corner"	to next:231			so many trees, gave up trying to photograph
5/9/2003	MAW	1.13		sw corner (cairn)	to next:153	42.44954	-72.46043	
5/9/2003		(none)		next "corner" in right -of-way (30 feet from corner, 40 feet to road)	to next: 160			
5/9/2003		(none)		blue line markers nearer road				
5/9/2003		(none)		road, w corner				
5/9/2003	MAW	1.14		stone wall about 75 feet from road (perhaps old edge of road?) about half way along roadway line				walked along road, lots of trash, picked up most
11/1/2009	MAW		002, 005	brook edge, ne corner	see map	42.4497	-72.4512	
11/1/2009	MAW		006	on line tree stump		42.4494	-72.4519	
11/1/2009	MAW		010	100m mark on sw line		42.4493	-72.4522	
11/1/2009	MAW		011	200m mark on sw line		42.4491	-72.4534	
11/1/2009	MAW		012, 014	300 m just below open ridge		42.4490	-72.4541	
11/1/2009			022, 024,					
4/2/2010	MAW		002	corner Turner and L Fitts		42.4488	-72.4547	
11/1/2009	MAW		020	at road between path/stream. stream overlay may be wrong		42.4499	-72.4550	
11/1/2009	MAW		021	old blue red ribbons		42.4491	-72.4547	
11/1/2009	MAW		029	just s of hill 100 m		42.4489	-72.4559	
11/1/2009	MAW		031	200 mid so and s of top		42.4490	-72.4573	
4/2/2010	MAW		005	fitts (mortgage) turner cor		42.4491	-72.4587	
11/1/2009	MAW			stone wall w end		42.4500	-72.4586	
11/1/2009	MAW		032, 034, 035	fit turner line at rd,w		42.4504	-72.4586	
11/1/2009	MAW		041, 043	sw corner by farm pond		42.4495	-72.4604	
11/1/2009	MAW		040	turn in w line by fence		42.4497	-72.4602	
11/1/2009	MAW		044, 045, 046	nw corner at road, wd st		42.4503	-72.4600	walk western line every time, look for changes.

Scheffey Boundary Lines

Most pictures taken on November 1, 2009

Sequence begins beside Roaring Brook at the Shutesbury/Leverett line. It then follows the south line to the west line and back to the Shutesbury Road. There are two trips down to the road.

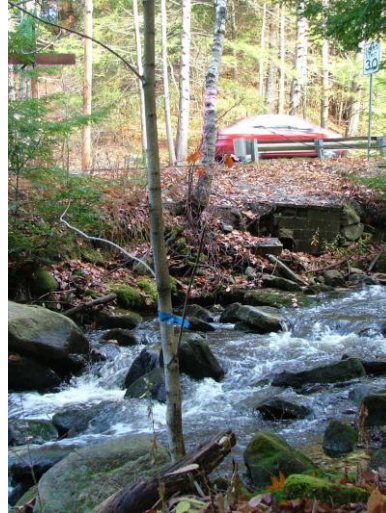
Number of right-hand side of line is the digital jpeg number. Blue tape in pictures always marks line. South line painted red April 2, 2010. East line painted some.

001. E corner 002

East corner, south side of Roaring Brook.

Town line sign on left

42.4497 -72.4511



002. E corner 005

Looking along line (white tape)
to sw (268 degrees)



003. Along E section of S line 006

Short path, dumped stump

looking from the road

white tape (line) in front of stump

42.4494 -72.4519



004. Along E. section of S line 007
Looking back to E corner



005. 100 m from E corner 010
Along E section of S line
42.4493 -72.4522



006. 200 m from E corner 011
Along E section of S line
42.4491 -72.4534



007. 300 m from E corner 012
Along E section of S line
looking south
42.4490 -72.4541



008. At 300 m, looking SW along line 014



009. looking northwest from the line 015
to a hillock. Tape (line) crossing in front.



010. Corner between Rodolphus 022
Turner section and land he mortgaged
to Lucy Fitts.
42.4488 -72.4548



011. Same corner, looking north, 024
downstream



012. Same corner, looking east 002
across stream, corner has just been
painted with red paint 4/2/2010



013. Down line to road 020
Path to left (old wooden no trespassing sign),
stream – culvert at yellow stake to right
42.4499 -72.4550



014. 100 m along mid-section of S. line 029
42.4489 -72.4559



015. 200 m along mid-section of S. line 031
42.4490 -72.4573



016. Corner of James Fitts and Lucy Fitts 005
(held mortgage on w. half of Turner parcel
corner just painted red, 4/2/2010
42.4491 -72.4587



017. N. Corner of two parcels 034
path to left (see #18) , white bag marks line measured
(path might be the actual line)



018. Close-up of path (#17) into laurels 035



019. Third view of corner 036
Sun on Road is at neighbor's (Raymonds)



020. E-W Woods Road 037
Parallel and north of south line 22 m



021 100 from Fitts/Fitts point along 038
western section of south line



022. SW Corner
Looking west to farm pond
42.4496 -72.4604

041



023 SW Corner looking south

043



024. Mid-West point
Small turn in fence
42.4497 -72.4602

040



025. NW Corner along road 044
wooden post (deed says iron pin)
looking southwest
42.4503 -72.4600



026. NW Corner looking south 045



027. Just south of corner, looking south 046
line goes just beside the barn. (Right of way
includes some storage along road.)



Scheffey										
baseline/monitoring data										
date of deed	3/10/1998									
baseline or monitoring	date of data collection	RGT participants (1)	RGT participants (2)	RGT participants (3)	others	photos (#, film or digital?)	other documentation ?	date report filed RGT	notes	next monitoring date
monitoring	9-May-03	Joan Godsey	Mary Alice Wi	Al Shane		5 film		5/21/2003		
monitoring	26-May-04	Joan Godsey	Richard Godse	Al Shane	Richard Godsey			5/26/2004		
monitoring	18-Apr-05	Joan Godsey		Al Shane	Richard Godsey			4/25/2005	transfer station took 4 trash bags no charge not sure of line, want to meet with Franklin Land Trust (CR to south)	spring 2006
montoring	11/30/2008	Joan Godsey	Mary Alice Wilson						Will pointed out inf missing in our file, spent time at deeds office	
monitoring plus shared boundary	10/27/2009	Joan Godsey	Mary Alice Wilson		Will Anderson from FLT				walked line with gps and 100 meter tape and camera (and did trash bags at end)	fall 10
monitoring but really baseline better job	11/1/2009		Mary Alice Wilson		Bill Wilson	45 digital	gps points	11/16/2009	line now painted red carry paint to renew letter to neighbor?	2011
measuring, marking line	3/19, 3/21, 4/2, 2010	J. Godsey (3/19)	Mary Alice Wilson	Bill Wilson	Liz Scheffey (3/19)	6(4/2)	gps points	4/28/2010	do we need to write letter to Mr. Raymond about access area?	2012
monitoring nailing up boundary markers	8/30/2011	J Godsey	Mary Alice Wi	Bill Wilson				9/7/2011		

(reports in separate pdf files)