

RGT Monitoring Report

1. Name of Property and Year: Rattlesnake Hill 2014
2. Property owned by Inhabitants of Leverett/Leverett Conservation Commission

Date owner was invited to join in the monitoring: Arranged during week prior to monitoring.
3. Date and recommendations from last year's monitoring: 10/11/13
 - Once agreement has been reached with private landowner to access the property from Old Cave Hill Road, a trail around the RH property should be marked, approved by ConCom and then developed.
 - Once trail is completed, maps should be created and posted on the web.
4. Date of this year's monitoring: November 23, 2014.
5. Participants: Andrew Young, ConCom; Eva Gibavic, Rocky Adriance and Mary Barnett, RGT.
6. Describe the monitoring route briefly (also draw on map): Parked at pull-off on Bergeron-Adams-Young driveway nearest the property (IP K). Walked clockwise beginning at K to A and around the bounds. Went to all but two IPs, did not find the drill hole at D (in spite of being at exactly the correct place). IP E hid from us in plain view. We did not crash through the laurel to get to J, but old tree is still there marking its location and made visual inspection from a distance. Viewed section from J back to K from driveway.
7. Describe any man-made alterations: None observed.
8. Describe any natural alternations: Increased damage from to hemlock trees from wooly adelgid. A great deal of thinning of the tree cover and a number of hemlocks that have died and fallen. Andrew provided a great deal of forestry-related information, including an excellent example of a stump spout.
9. If CR, describe any interactions with landowner(s) during the monitoring or since the past monitoring: None.
10. Describe any changes in use being planned (ownership? land use?): None; trail use when developed.

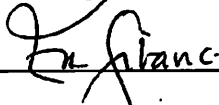
11. List any observations comments, areas needing discussion or review:

- Last year's monitoring team did not find IP B and misidentified location, including marking of property bounds incorrectly.
- The line that the surveyors marked along F to G does not match the old blazes on the trees. Likewise, the surveyors created a new IP at F, not using the previously marked bound with the Blinn property on the cliff below. While the inconsistency was noted at the time of the survey, the inconsistency remains.

12. List any needed follow-up:

- IP B needs to be better marked so it can be found in future years.
- Boundary markers and red paint along the line between B and C needs to be corrected.
- IP C6, G2 and IP E needs better marking.
- Property lines around IP H, H2 and IP I needs better blazing.
- View of Mt. Greylock from the lookout on the cliff above needs some clearing work.
- Monitoring maps needs modification relative to Blinn/Eaton pin at E4 and C6.
- Update photos for monitoring with this year's additions.

13. Suggestions for next year's monitoring team? See section 12. Additionally, if the trail is complete, walk the interior sections.

Signed: 

Date Signed: 12/31/14

AND

I have asked to present this report at the next RGT Board Meeting.

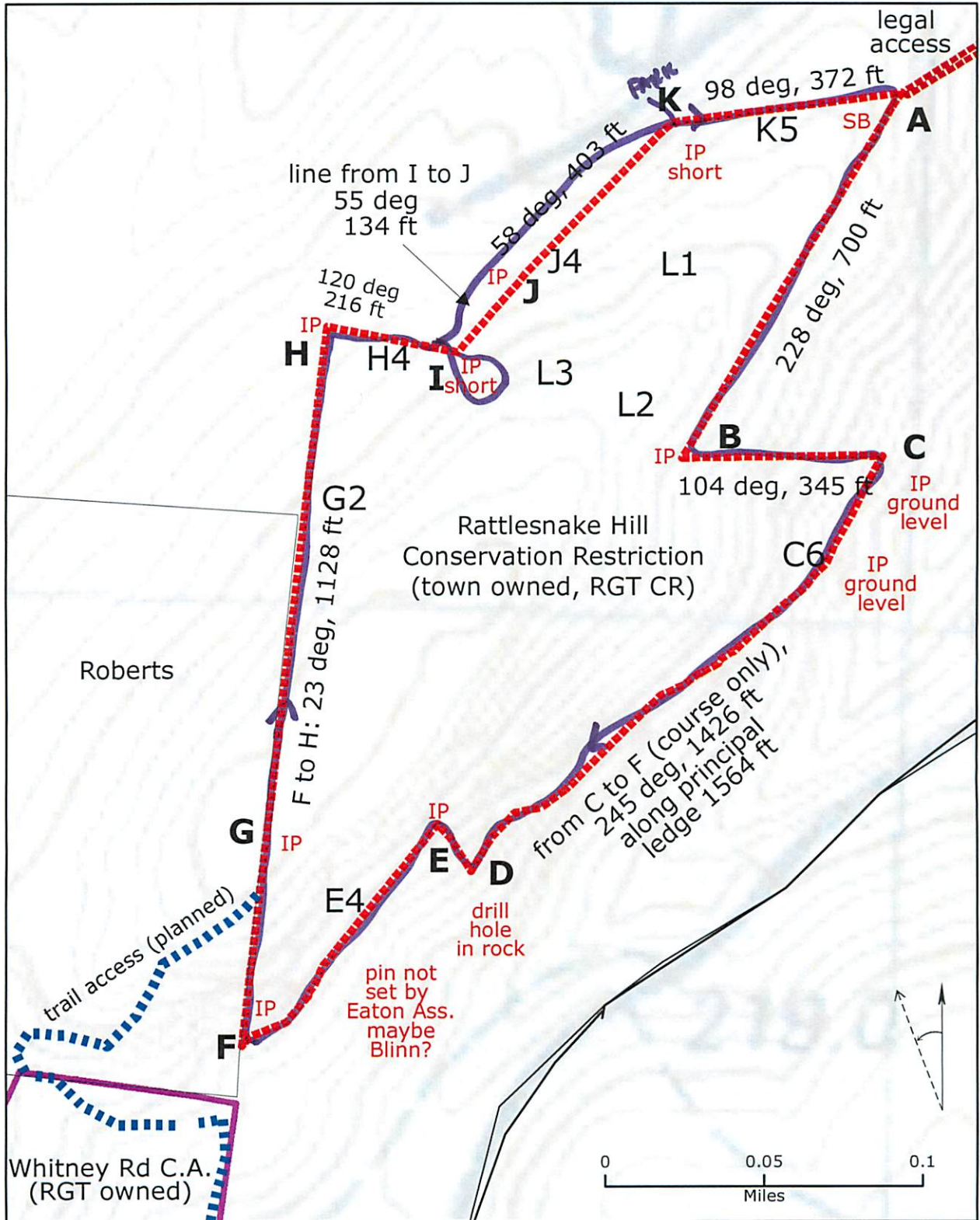
I have sent a copy of this report to the owner (if CR).

I have printed out a copy of this report and put it in the RGT green Field Notebook.

I have sent a copy to the person who puts reports in the RGT blue Archive Notebook.

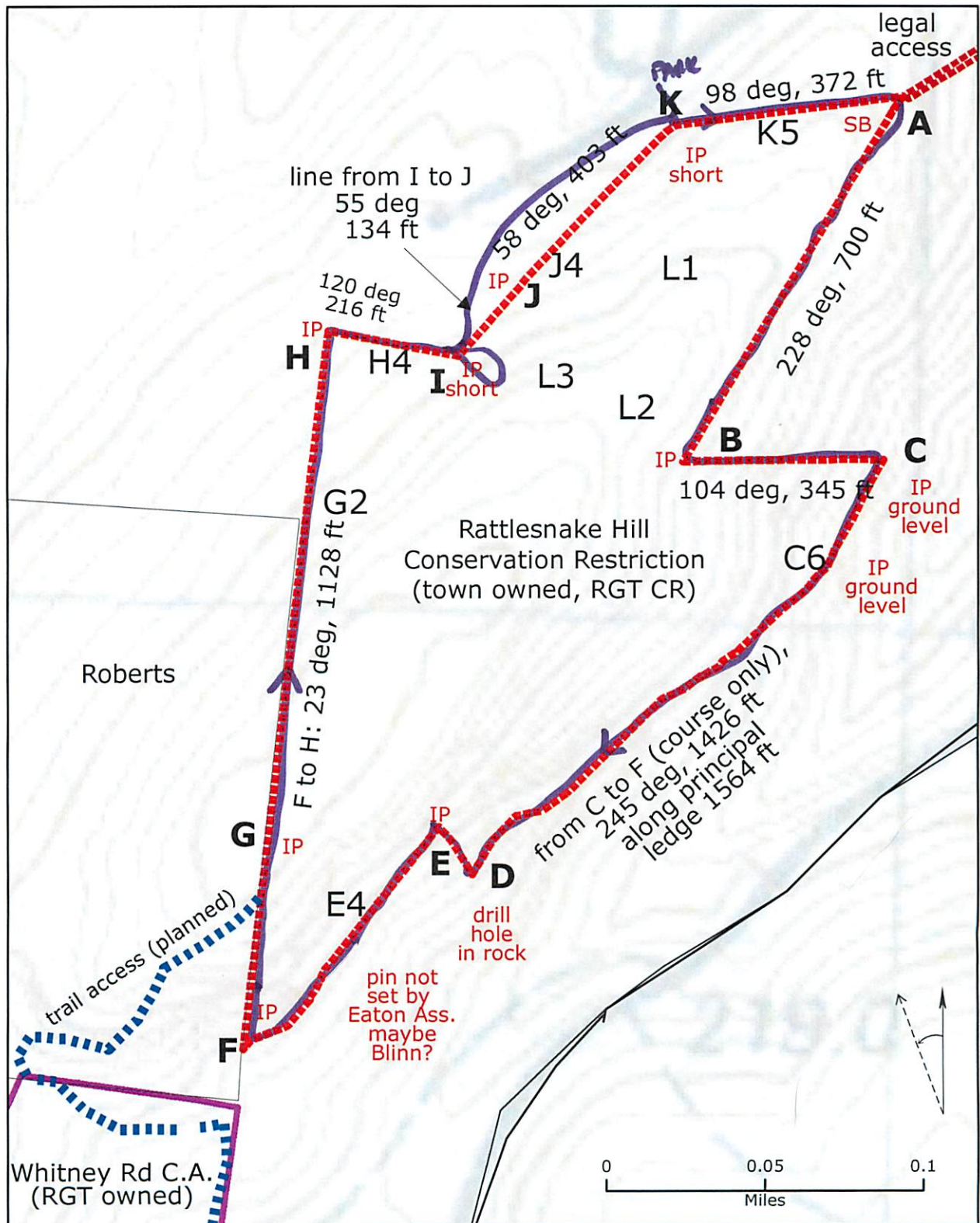
I have sent an electronic copy of this report to the person who puts it on the Board-only section of the RGT website.

Rattlesnake Hill Conservation Restriction Monitoring Map: Lines, Corners, Sites of Special Interest



Boundary points (bold) and points of interest (not bold).
 IP = Iron (surveyor's) pin; SB = Stone Bound
 Boundary lines painted in red and marked with blue metal
 conservation signs(except along cliffs)

Rattlesnake Hill Conservation Restriction Monitoring Map: Lines, Corners, Sites of Special Interest



Boundary points (bold) and points of interest (not bold).
 IP = Iron (surveyor's) pin; SB = Stone Bound
 Boundary lines painted in red and marked with blue metal
 conservation signs(except along cliffs)