

RGT - Mosher Parcel Monitoring Report 2008

Parcel boundary monitoring conducted on 6/14/2008 by Glen Ayers

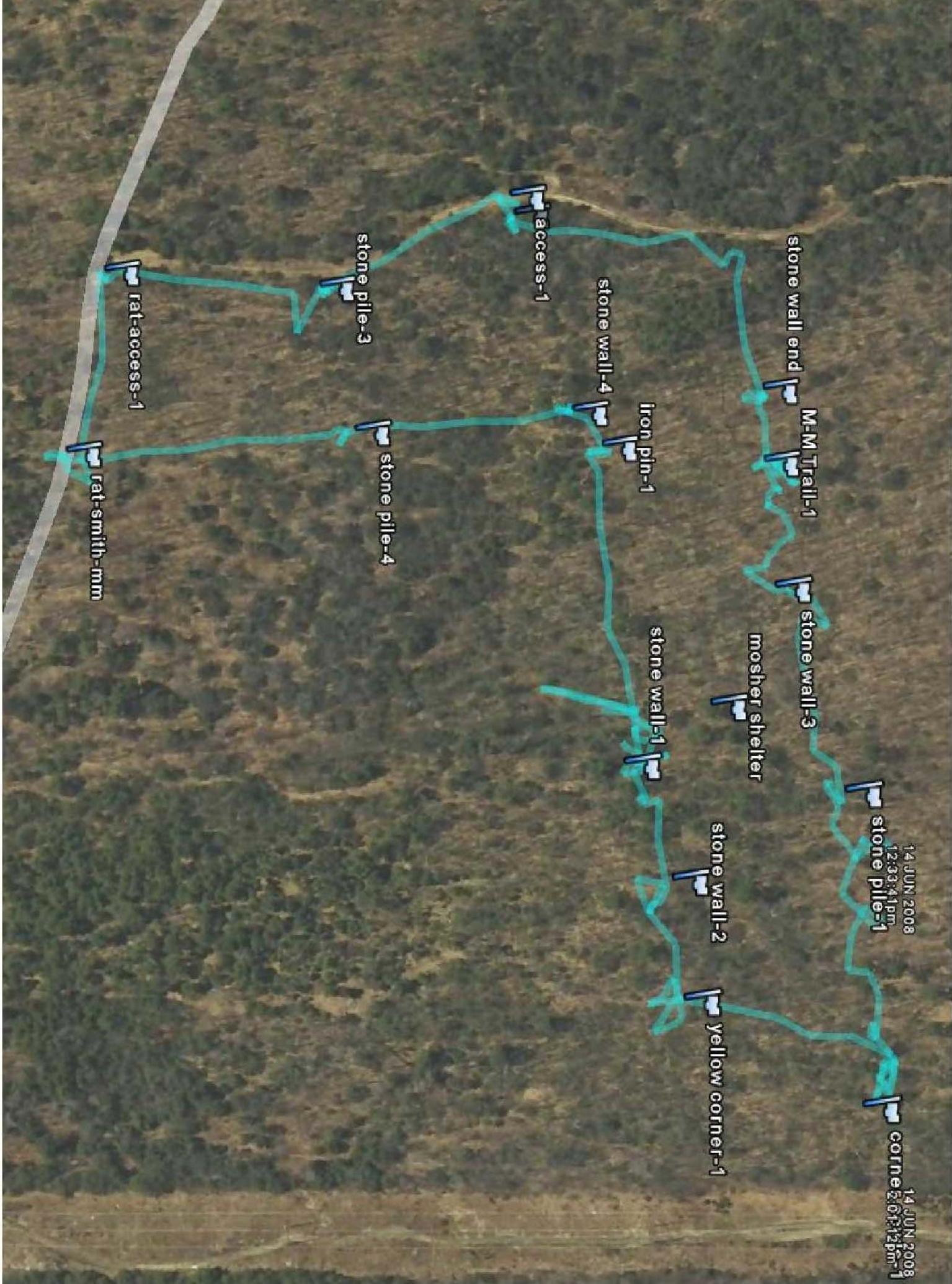
1. Starting at the intersection of Rat Hollow Road and the southeast corner of the parcel bounding land to the east owned by David Smith,
2. Proceeding north along a well marked boundary blazed by white paint,
3. Arrive at a well-marked corner and the start of a rock wall veering to the right (Easterly), still following white blazes,
4. To a well marked point where the property line ends and turns north, marked by yellow paint,
5. Following yellow blazes through mountain laurel and pine in a northern direction to the boundary with Cowls property, well marked with yellow triangles and old red blazes,
6. Following the red-blazed property line to the west along a line of frequent surface rock piles and stone walls,
7. To the intersection with an access road along the western boundary of the parcel,
8. Heading south along a red-blazed property line (Cowls) several yards in from the access road,
9. Arriving at Rat Hollow Road, thence to the east along RHR to the start.

The condition of the parcel is stable, with no intrusions. The M-M Trail traverses the parcel and a small side trail leads to the Mosher Shelter. The shelter is in excellent condition and sees very infrequent use. The shelter is clean and no evidence of trash or firewood cutting is visible in the immediate area. The privy seems to get little to no use.

Overall, this is a beautiful and peaceful spot.

Glen Ayers, 6/17/08

Label Bearing	Type	Symbol	Description	Waypoint	Comment	Latitude	Longitude	Elevation	Distance to Active Point
access-1 N/A	Monument	Default		access-1	#	N42.45195	W072.48047	648.62 ft	N/A
corner cowls-1 N/A	Monument	Default		corner cowls-1	#	N42.45347	W072.47496	892.72 ft	N/A
iron pin-1 N/A	Monument	Default		iron pin-1	#	N42.45237	W072.47889	730.97 ft	N/A
M-M Trail-1 N/A	Park	Default		M-M Trail-1	#	N42.45311	W072.47879	692.91 ft	N/A
mosher shelter N/A	Camp	Default		mosher shelter	#	N42.45284	W072.47730	623.03 ft	N/A
rat-access-1 N/A	Monument	Default		rat-access-1	#	N42.45006	W072.48001	621.39 ft	N/A
rat-smith-mm N/A	Monument	Default		rat-smith-mm	#	N42.44989	W072.47887	625 ft	N/A
stone pile-1 N/A	Monument	Default		stone pile-1	#	N42.45341	W072.47679	843.83 ft	N/A
stone pile-2 N/A	Monument	Default		stone pile-2	#	N42.45197	W072.48036	666.01 ft	N/A
stone pile-3 N/A	Monument	Default		stone pile-3	#	N42.45107	W072.47990	621.72 ft	N/A
stone pile-4 N/A	Monument	Default		stone pile-4	#	N42.45124	W072.47899	639.44 ft	N/A
stone wall end N/A	Monument	Default		stone wall end	#	N42.45311	W072.47925	652.23 ft	N/A
stone wall-1 N/A	Monument	Default		stone wall-1	#	N42.45245	W072.47695	828.41 ft	N/A
stone wall-2 N/A	Monument	Default		stone wall-2	#	N42.45266	W072.47626	824.15 ft	N/A
stone wall-3 N/A	Monument	Default		stone wall-3	#	N42.45314	W072.47801	796.92 ft	N/A
stone wall-4 N/A	Monument	Default		stone wall-4	#	N42.45224	W072.47911	730.64 ft	N/A
yellow corner-1 N/A	Monument	Default		yellow corner-1	#	N42.45270	W072.47556	905.18 ft	N/A



14 JUN 2008
12:33:44pm

14 JUN 2008
2:02:12pm

corne

stone pile-1

stone wall-3

masher shelter

stone wall-2

yellow corner-1

stone wall-1

iron pin-1

stone wall-4

access-1

stone pile-4

stone pile-3

rat-access-1

rat-smith-mm

stone wall end

M-M Trail-1