

RGT - Mosher Parcel Monitoring Report 2008

Parcel boundary monitoring conducted on 10/6/2009 by Glen Ayers

1. Starting at the intersection of Rat Hollow Road and the southeast corner of the parcel bounding land to the east owned by David Smith,
2. Proceeding north along a well marked boundary blazed by white paint,
3. Arrive at a well-marked corner and the start of a rock wall veering to the right (Easterly), still following white blazes, iron pin noted along rock wall,
4. To a well marked point where the property line ends and turns north, marked by yellow paint, also near a rock wall to the east (on another's land),
5. Following yellow blazes through mountain laurel and pine in a northern direction to the boundary with Cowls property, well marked with yellow triangles and old red blazes,
6. Following the red-blazed property line to the west along a line of frequent surface rock piles and stone walls,
7. To the intersection with an access road along the western boundary of the parcel, large stone post marking corner,
8. Heading south along a red-blazed property line (Cowls) several yards in from the access road,
9. Arriving at Rat Hollow Road, thence to the east along RHR to the start.

The condition of the parcel is stable, with no intrusions. The M-M Trail traverses the parcel and a small side trail leads to the Mosher Shelter. The shelter is in excellent condition and sees regular but infrequent use according to log entries. The shelter is spotless and clean with no evidence of trash visible in the immediate area. The privy seems to get little to no use.

A large oak tree blow-down was removed from the shelter roof in Aug of 2008 by Al Shane, Pat Fletcher, and Glen Ayers. Luckily only the tree's large top branches were leaning on the shelter roof and the fall was partially broken by another intermediate maple tree. There was very minor damage done to a few shingles on the roof of the shelter. The tree top was partially cut up with a chainsaw and there is now an abundance of firewood at the site, some of which will need to be split. The large main stem of the oak is still attached to the root wad and could also be cut for fire wood.

Glen Ayers, 10/7/09

Mosher Monitoring points 10-06-2009

Symbol	Description	Waypoint	Comment	Type	Latitude	Longitude
Default	start at RHR with Smith	rhr-corner1		Waypoint	42.44989	-72.478522
Default	with Smith	2nd corner		Waypoint	42.45196	-72.479215
Default	with Smith	ne corner		Waypoint	42.45226	-72.47535
Default	with Cows	nw corner		Waypoint	42.4536	-72.475158
Default	with Cows	west wall		Waypoint	42.45325	-72.477847
Default	with Cows	stone corner		Waypoint	42.45324	-72.480013
Default	at RHR	sw corner		Waypoint	42.45017	-72.479997

Mosher monitoring 10/6/09



Mosher monitoring 10/6/09

Mosher monitoring 10/6/09



Mosher monitoring 10/6/09

Mosher monitoring 10/6/09



Mosher monitoring 10/6/09



Mosher monitoring 10/6/09



Mosher monitoring 10/6/09



Mosher monitoring 10/6/09



Mosher monitoring 10/6/09



Mosher monitoring 10/6/09

Mosher monitoring 10/6/09



Mosher monitoring 10/6/09

Mosher monitoring 10/6/09

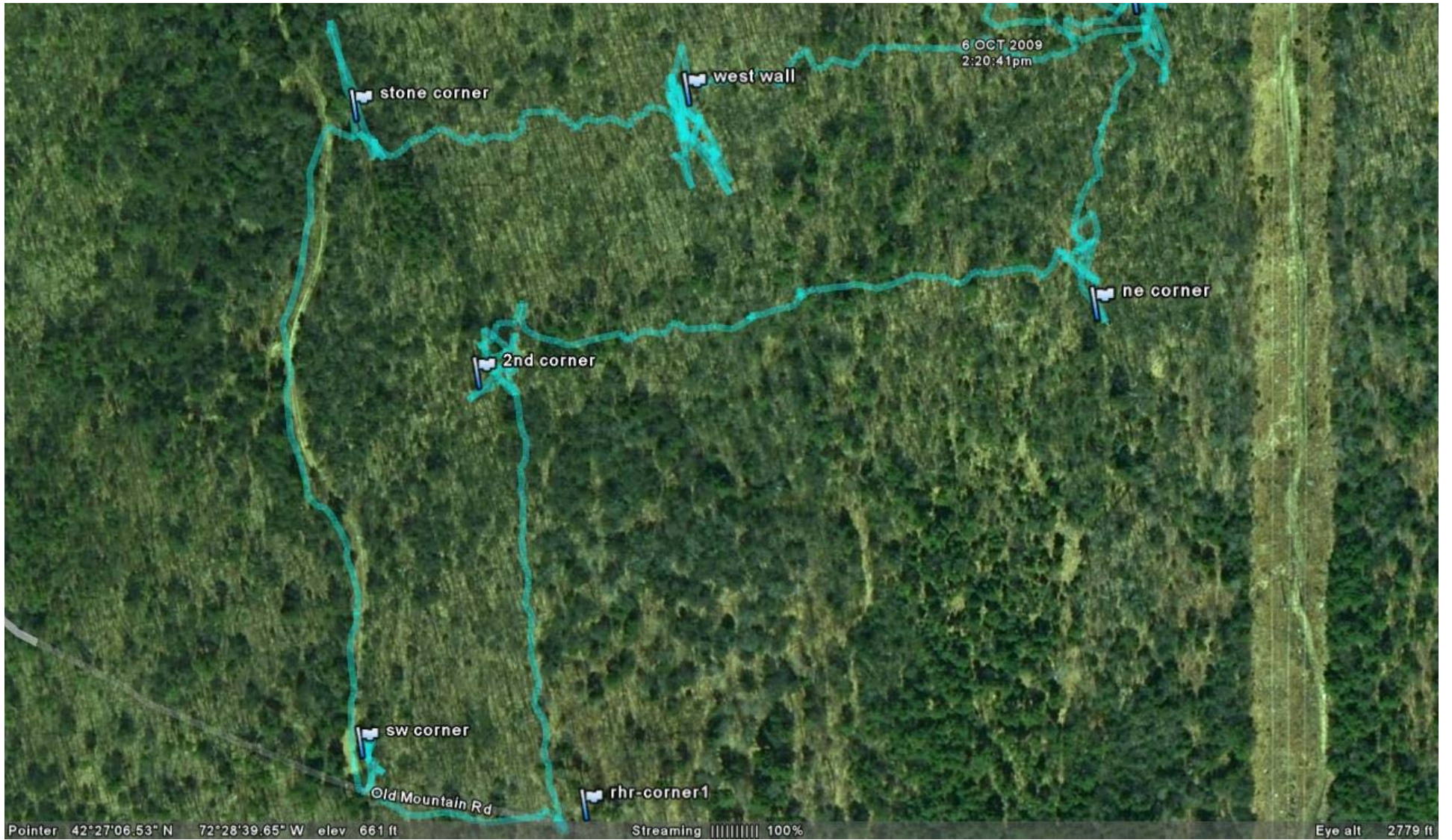


Mosher monitoring 10/6/09



Mosher monitoring 10/6/09





Mosher blowdown 8/20/09 -before



Mosher blowdown 8/20/09 -before

Mosher blowdown 8/20/09 -before



Mosher blowdown 8/20/09 -before

Mosher blowdown 8/20/09 -before



Mosher blowdown 8/20/09 -before



Mosher blowdown 8/20/09 -before



Mosher blowdown 8/20/09 -before



Mosher blowdown 8/20/09 -before



Mosher blowdown 8/20/09 -after



Mosher blowdown 8/20/09 -after

Mosher blowdown 8/20/09 -after



Mosher blowdown 8/20/09 -after

Mosher blowdown 8/20/09 -after



Mosher blowdown 8/20/09 -after



Mosher blowdown 8/20/09 -after



Mosher blowdown 8/20/09 -after



Mosher blowdown 8/20/09 -after

