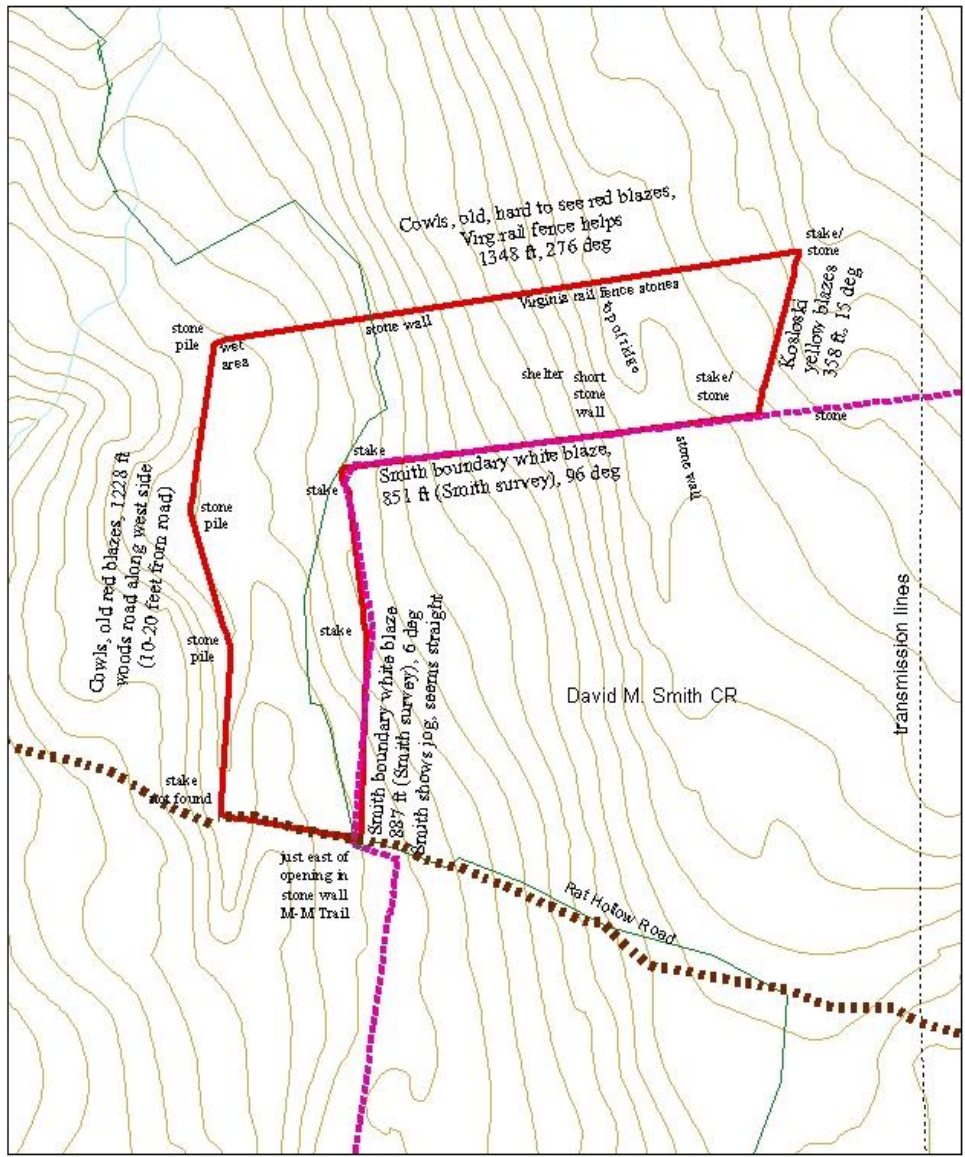
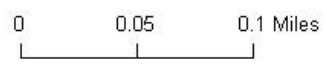


Mosher Conservation Area Baseline Documentation, part 2

Mosher Conservation Area						
photo log, Word file: mosher boundaries 2						
note: there are additional pictures in computer files. Digital numbers were inadvertently erased when titles added						
There is an additional set of pictures of the M-M Trail shelter, see Glen Ayers						
date	phgrap h #	location	azimuth m	latitude	longitide	notes for future monitors
11/7/2004	M1	Rat Hollow/Smith corner - looking east				
11/7/2004	M2	Rat Hollow/Smith corner - looking north				can see opening in stone wall
11/7/2004	M3	Rat Hollow/Smith corner - looking west		42.44972	-72.4787	Rat Hollow/Smith
10/22/2004	M4	Cowls logging road, south from near corner				(note there is no picture of sw corner)
10/22/2004	M5	Culvert on logging road, with stream				corner just beyond culvert eastern edge 20-30 ft from road, just beyond culvert
10/22/2004	M6	Stone Stake, Cowls NW corner		42.45315	-72.48013	
10/22/2004	M7	Stonewall on north (Cowls) line	100			wall starts in from corner due south is Mosher/Smith "inside corner" about 350 ft
10/22/2004	M8	M-M Trail on Cowls/Mosher line				
10/22/2004	M9	Continuing stone wall along north line				later, stone piles (virginia rail fence) replace stone wall cowls turns ne, mosher s,
10/22/2004	M10	Cowls northeast corner (cowls/kosloski/mosher)		42.453666	-72.47515	
10/22/2004	M11	on Kosloski line looking north	195/15			358 feet, follows ridgeline
10/22/2004	M12	on Kosloski line, futher south, looking north				
4/22/2005	M13	Smith east corner (Smith/Mosher/Kosloski)		42.45265	-72.47555	corner marked by stake and stones
4/22/2005	M14	from east corner looking north				
10/22/2004	M15	Smith "inside" corner		42.4518666	-72.47895	(this is where Smith and Mosher lines turn) east-west stone wall ends



Mosher Conservation Area for Monitoring



M1. Mosher southeast corner
smith/mosher/rat hollow road
corner, looking east
11/07/2004
42.44972, -72.4787



M2. Smith/mosher/rat hollow road
corner, looking north, 11/07/2004
can see opening in the stone wall



M3. Smith/mosher/rat hollow road
corner, looking west, 11/07/2004



M4. Cowls road south from
stake, 10/22/04



M5. stream, Cowl's culvert
10/22/2004
corner stake is just north of this
culvert



M6. Mosher northwest corner
Moshe/ Cowls stone stake
10/22/2004. Line (marked in
red) is 20-30 feet from road,
stake is just beyond culvert.
42.45315, -72.48013



M7. Along Cowls line, stone wall
10/22/2004, cowls line marked
with red blazes



M8. Where M-M trail crosses the
Mosher north line with Cowls
10/22/2006



M9. Continuing along the stone wall
marking Mosher north line with Cowls
10/22/2004. Line later becomes
stones for Virginia Rail fence.



M10. northeast corner of mosher land,
cowls property to north, Kosloski
to the east, 10.22/2004
42.45366, -72.47515



M11. On Kosloski/Mosher line
(Mosher east line)
northern part, looking north
4/21/2005
line marked by yellow paint
(south 15 degrees west = 195)



M12. On Kosloski/Mosher line
(Mosher east line)
southern part, looking north
4/21/2005



M13. Mosher southwest corner
Smith/Mosher/Kosloski corner
stake and stones 4/21/2005



M14. Smith/Mosher/Kosloski corner
looking north



M15. "inside corner" where
both Mosher and Smith lines
turn from east-west to
north-south
10/22/2004
42.45265, -72.47555

