

[Larval food plants are in square brackets]

### **Sesiidae**

Red Maple Borer (*Synanthedon acerrubri*)  
[maple]

### **Pyralidae**

Eastern Grass Veneer (*Crambus laqueatellus*) [grasses]  
White-spotted Sable (*Anania funebris*)  
[goldenrod]  
Grape Leaf-folder (*Desmia funeralis*)  
[many]

### **Depranidae**

Rose Hooktip (*Oreta rosea*) [viburnum]\*

### **Geometridae**

Barberry Geometer (*Coryphista meadii*)  
[barberry]  
White-ribboned Carpet (*Mesoleuca ruficillata*) [blackberry]  
White-striped Black (*Trichodezia albovittata*) [impatiens]  
Sweet Fern Geometer (*Cyclophora pendulinaria*) [many] \*  
Red-fringed Emerald (*Nemoria bistriaria*)  
[many]

Common Lytrosis (*Lytrosis unitaria*)  
[many, trees]  
Crocus Geometer (*Xanthotype urticaria*)  
[many] \*  
Pale Beauty (*Campaea perlata*) [many,  
trees] \*  
Northern Pine Looper (*Caripeta pimiata*)  
[pine]  
Large Maple Spanworm (*Prochoerodes lineola*) [many]

### **Lasiocampidae**

Lappet Moth (*Phyllodesma americana*)  
[many, trees/shrubs]  
Forest Tent Caterpillar Moth (*Malacosoma disstria*) [many, trees]  
Eastern Tent Caterpillar Moth  
(*Malacosoma americana*) [many,  
trees]

### **Saturniidae**

Rosy Maple Moth (*Dryocampa rubicunda*)  
[maple+] \*  
Luna Moth (*Actias luna*) [many, trees]  
Promethea Moth (*Callosamia promethea*)  
[many, trees/shrubs] \*  
Cecropia Moth (*Hyalophora cecropia*)  
[many, trees/shrubs]

### **Sphingidae**

Waved Sphinx (*Ceratomia undulosa*)  
[many, trees] \*  
Northern Pine Sphinx (*Lapara bombycoides*) [pine]  
Blinded Sphinx (*Paonias excaecata*)  
[many, trees]  
Hummingbird Clearwing (*Hemaris thysbe*)  
[many] \*  
Nessus Sphinx (*Amphion floridensis*)  
[grape+] \*

### **Notodontidae**

Black-rimmed Prominent (*Pheosia rimosa*)  
[poplar/willow]  
White-headed Prominent (*Symmerista albifrons*) [oak]

### **Lymantriidae**

Gypsy Moth (*Lymantria dispar*) [oak+]  
White-marked Tussock Moth (*Orgyia leucostigma*) [many, trees]

### **Arctiidae**

Painted Lichen Moth (*Hypoprepia fucosa*)  
[lichen/moss] \*  
Virgin Tiger Moth (*Grammia virgo*)  
[many, low plants]

Isabella Tiger Moth (*Pyrrharctia isabella*)  
[many] \*  
Clymene Moth (*Haploa clymene*) [many]  
\*  
The Neighbor (*Haploa contigua*)  
[trembling aspen]  
Delicate Cynia (*Cynia tenera*)  
[milkweed] \*  
Milkweed Tussock Moth (*Euchaetes egle*)  
[milkweed] \*  
Virginia Ctenucha (*Ctenucha virginica*)  
[many] \*

## Noctuidae

Sweet Fern Underwing (*Catocala antinympha*) [sweet fern] \*  
White Underwing (*Catocala relictata*)  
[poplar/willow] \*  
Figure-Seven Moth (*Drasteria grandirena*)  
[witch hazel]  
Lunate Zale (*Zale lunata*) [many]  
Eyed Paectes (*Paectes oculatrix*) [poison  
ivy] \*  
Beautiful Eutelia (*Eutelia pulcherrimus*)  
[poison sumac]  
Eastern Panthea (*Panthea furcilla*)  
[conifers]  
Green Marvel (*Agriopodes fallax*)  
[viburnum]  
Tufted Bird-dropping Moth (*Cerma  
cerintha*) [apple, cherry] \*  
Pearly Wood Nymph (*Eudryas unio*) [low  
plants, vines]

Eight-spotted Forester (*Alypia  
octomaculata*) [vines]  
Primrose Moth (*Schinia florida*) [evening  
primrose] \*  
Silver-spotted Fern Moth (*Callopietria  
cordata*) [ferns] \*  
Olive Angle Shades (*Phlogophora iris*)  
[low plants]  
Sensitive Fern Borer (*Papaipema  
inguaesita*) [sensitive fern]

\*Most likely to be encountered, as larvae or  
adults during daylight hours at the East  
Leverett Meadow.

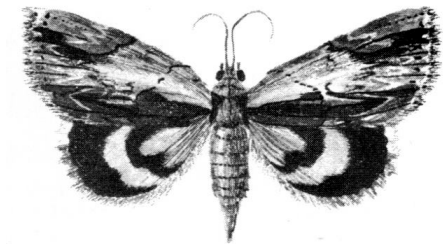
## Field Guides to Moths

Beadle, David & Seabrooke Leckie. 2012.  
*Peterson Field Guide to Moths of  
Northeastern North America*. Houghton  
Mifflin Harcourt: Boston/New York.

Covell, Charles V. Jr. 1984. *A Field Guide  
to the Moths of Eastern North America*.  
Houghton Mifflin Company: Boston.  
[Reprinted (with revisions), 2005. Virginia  
Museum of Natural History.]

# MOTHS OF LEVERETT

This is a very partial list of species known  
to occur in Leverett, MA – with special  
reference to East Leverett Meadow –  
emphasizing particularly striking and/or  
ecologically interesting examples.



Special thanks to:

Ted Sargent for this list and for the longer,  
more complete list which is available on  
the RGT website:  
[www.rattlesnakeguttertrust.org/events](http://www.rattlesnakeguttertrust.org/events)

and to Kathy Doktor-Sargent for her  
illustration of the Ultonia Underwing.