



Photo 1. Waypoint 1. 216° AZMG. View SSW into CR from Long Hill Natural Area viewing site, along approximate location of northern boundary of CR.



Photo 2. Waypoint 1. 244° AZMG. View WSW into CR from Long Hill Natural Area viewing site, near approximate location of northern boundary of CR.



Photo 3. Waypoint 1. 148° AZMG. View SSE into CR from Long Hill Natural Area viewing site, near approximate location of northern boundary of CR.



Photo 4. Waypoint 1. 122° AZMG. View SE along approximate location of northern boundary of CR from Long Hill Natural Area viewing site.

Photographer: Chris Volonte

Signature: SIGNED PHOTO CONTACT SHEETS ON FILE

Date Taken: 8 December 2011

Date Signed: 26 June 2012



Photo 5. Waypoint 1. 305° AZMG. View NW along approximate location of northern boundary of CR from Long Hill Natural Area viewing site.



Photo 6. Waypoint 1. 44° AZMG. View of cairns at Long Hill Natural Area viewing site from approximate location of northern boundary of CR.



Photo 7. Waypoint 1. 321° AZMG. View of bench at Long Hill Natural Area viewing site from approximate location of northern boundary of CR.

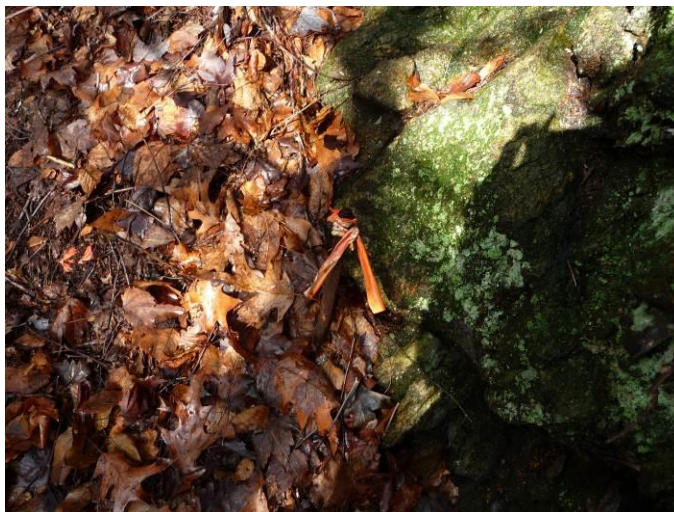


Photo 8. Waypoint 2. 348° AZMG. Presumed NE corner of CR. Iron pin with orange flagging at base of large boulder; tree with Rattlesnake Gutter Trust marker and flagging above. Closeup of pin.

Photographer: Chris Volonte

Signature: SIGNED PHOTO CONTACT SHEETS ON FILE

Date Taken: 8 December 2011

Date Signed: 26 June 2012



Photo 9. Waypoint 2. 114° AZMG. Presumed NE corner of CR. Iron pin with orange flagging at base of large boulder; tree with Rattlesnake Gutter Trust marker & flagging above. Closeup of tree with marker & flagging.

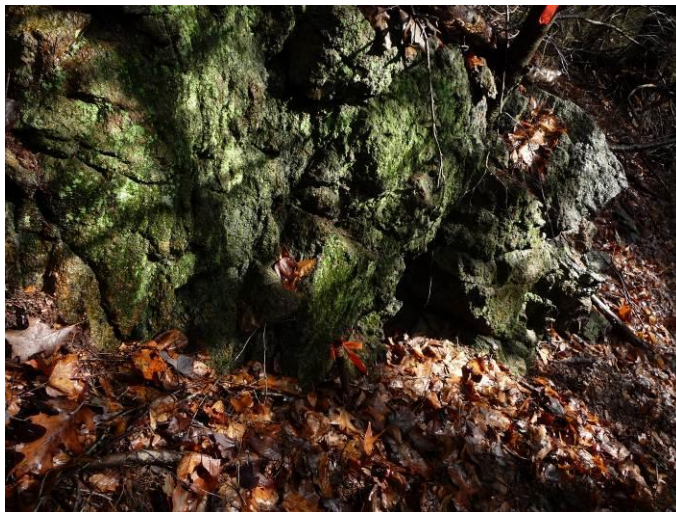


Photo 10. Waypoint 2. 114° AZMG. Presumed NE corner of CR. Iron pin with orange flagging at base of large boulder; tree with Rattlesnake Gutter Trust marker & flagging above. Pipe and base of tree with flagging.



Photo 11. Waypoint 2. 300° AZMG. View NW along approximate northern boundary of CR, from presumed NE corner of CR. Long Hill Natural Area viewing site is upslope to the right.



Photo 12. Waypoint 3. 49° AZMG. View toward NE corner of CR from approximate location of eastern boundary.

Photographer: Chris Volonte

Signature: SIGNED PHOTO CONTACT SHEETS ON FILE

Date Taken: 8 December 2011

Date Signed: 26 June 2012



Photo 13. Waypoint 3. 330° AZMG. View NW into CR from approximate location of eastern boundary.



Photo 14. Waypoint 3. 308° AZMG. View NW into CR from approximate location of eastern boundary.



Photo 15. Waypoint 4. 32° AZMG. View N toward Long Hill Natural Area viewing site from CR.



Photo 16. Waypoint 4. 128° AZMG. View SE toward eastern boundary from CR.

Photographer: Chris Volonte

Signature: SIGNED PHOTO CONTACT SHEETS ON FILE

Date Taken: 8 December 2011

Date Signed: 26 June 2012



Photo 17. Waypoint 4. 308° AZMG. View NW toward trees recently cut to facilitate view from Long Hill Natural Area.



Photo 18. Waypoint 5. 300° AZMG. View NW toward exposed bedrock in western portion of CR.



Photo 19. Waypoint 5. 200° AZMG. View S toward residence at 49 ½ Long Hill Road, from CR.



Photo 20. Waypoint 6. 37° AZMG. View N toward Long Hill Natural Area viewing site from CR.

Photographer: Chris Volonte

Signature: SIGNED PHOTO CONTACT SHEETS ON FILE

Date Taken: 8 December 2011

Date Signed: 26 June 2012



Photo 21. Waypoint 6. 324° AZMG. View NW toward exposed bedrock in western portion of CR.



Photo 22. Waypoint 6. 166° AZMG. View S toward residence at 49 1/2 Long Hill Road, from CR.



Photo 23. Waypoint 7. 128° AZMG. View SE along approximate southern boundary of CR from approximate location of SW corner.



Photo 24. Waypoint 7. 38° AZMG. View NE toward Long Hill Natural Area viewing site from approximate location of SW corner of CR.

Photographer: Chris Volonte

Signature: SIGNED PHOTO CONTACT SHEETS ON FILE

Date Taken: 8 December 2011

Date Signed: 26 June 2012



Photo 25. Waypoint 7. 94° AZMG. View E into CR from approximate location of SW corner.



Photo 26. Waypoint 8. 205° AZMG. View along presumed western boundary of CR from presumed location of NW corner, based on 2009 Leverett parcel data. Orange flagging previously placed along presumed boundary of Long Hill Natural Area by Brooke Thomas and Mary Alice Wilson (Rattlesnake Gutter Trust).



Photo 27. Waypoint 8. 180° AZMG. View S into CR from presumed location of NW corner, based on 2009 Leverett parcel data. Brooke Thomas visible in photo.



Photo 28. Waypoint 8. 208° AZMG. View SW along northern boundary of CR from presumed location of NW corner, based on 2009 Leverett parcel data.

Photographer: Chris Volonte

Signature: SIGNED PHOTO CONTACT SHEETS ON FILE

Date Taken: 8 December 2011

Date Signed: 26 June 2012



Photo 29. Waypoint 9. 247° AZMG. Location of small rock outcropping along northern boundary of CR. Rattlesnake Gutter Trust marker and flagging added by Brooke Thomas on 12/08/2011. (Photos 30, 31)



Photo 30. Waypoint 9. 300° AZMG. View NW along boundary from small rock outcropping along northern boundary of CR. (Photos 29, 31)



Photo 31. Waypoint 9. 130° AZMG. View SE along boundary from small rock outcropping along northern boundary of CR. (Photos 29, 30)



Photo 32. Waypoint 10. 297° AZMG. View NW from N boundary of CR toward presumed NW corner, based on 2009 Leverett parcel data (Photos 26, 27, 28). Pin along presumed N boundary of CR, visible in foreground, may be the actual NW corner, based on 2012 Leverett parcel data. (Photo 33)

Photographer: Chris Volonte

Signature: SIGNED PHOTO CONTACT SHEETS ON FILE

Date Taken: 8 December 2011

Date Signed: 26 June 2012



Photo 33. Waypoint 10. 297° AZMG. Closeup of pin along presumed northern boundary of CR, based on 2009 Leverett parcel data. (Photo 32). Pictured pin may be the actual NW corner, based on 2012 Leverett parcel data.

END OF 20 DECEMBER 2011 PHOTOS



Photo 34. Waypoint 1. Looking South. View toward subject Property from bench at Long Hill Natural Area viewing site.



Photo 35. Waypoint 1. Looking South. View toward subject Property from bench at Long Hill Natural Area viewing site (same as previous).

Photographer: Chris Volonte

Dates Taken: 20 December 2011 & 16 June 2012

Signature: SIGNED PHOTO CONTACT SHEETS ON FILE

Date Signed: 26 June 2012



Photo 36. Between Waypoints 1 & 9. Looking SW.
View toward subject Property from Long Hill Natural Area viewing site (east of bench).



Photo 37. Waypoint 9. Looking SW. View into subject Property from Long Hill Natural Area viewing site.



Photo 38. Waypoint 9. Looking NW. View along approximate location of northern boundary of subject Property (Photo 30).



Photo 39. Waypoint 8. Looking SE. View along approximate location of northern boundary of subject Property from NW corner (Photo 28).

Photographer: Chris Volonte

Dates Taken: 20 December 2011 & 16 June 2012

Signature: SIGNED PHOTO CONTACT SHEETS ON FILE

Date Signed: 26 June 2012

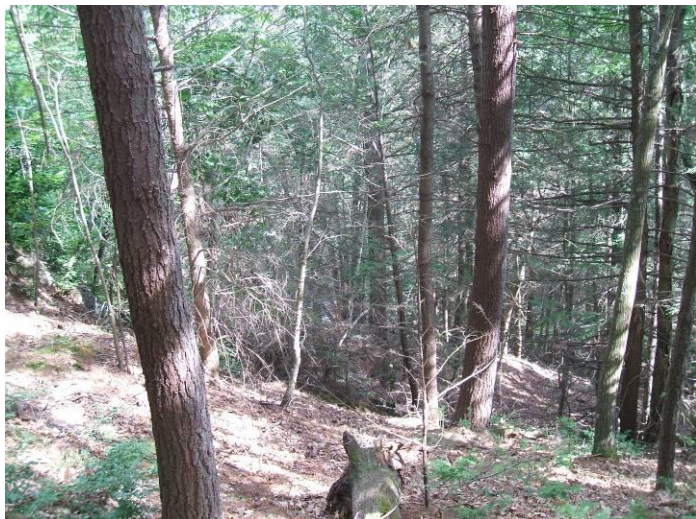


Photo 40. Near Waypoint 8. Looking SE. View into subject Property from top of ridge near NW corner.



Photo 41. No Waypoint Taken. Closeup of hemlock wooly adelgid (*Adelges tsugae*) on tree near the Long Hill Natural Area viewing site, along the trail.

END OF 16 JUNE 2012 PHOTOS

Photographer: Chris Volonte

Signature: SIGNED PHOTO CONTACT SHEETS ON FILE

Dates Taken: 20 December 2011 & 16 June 2012

Date Signed: 26 June 2012