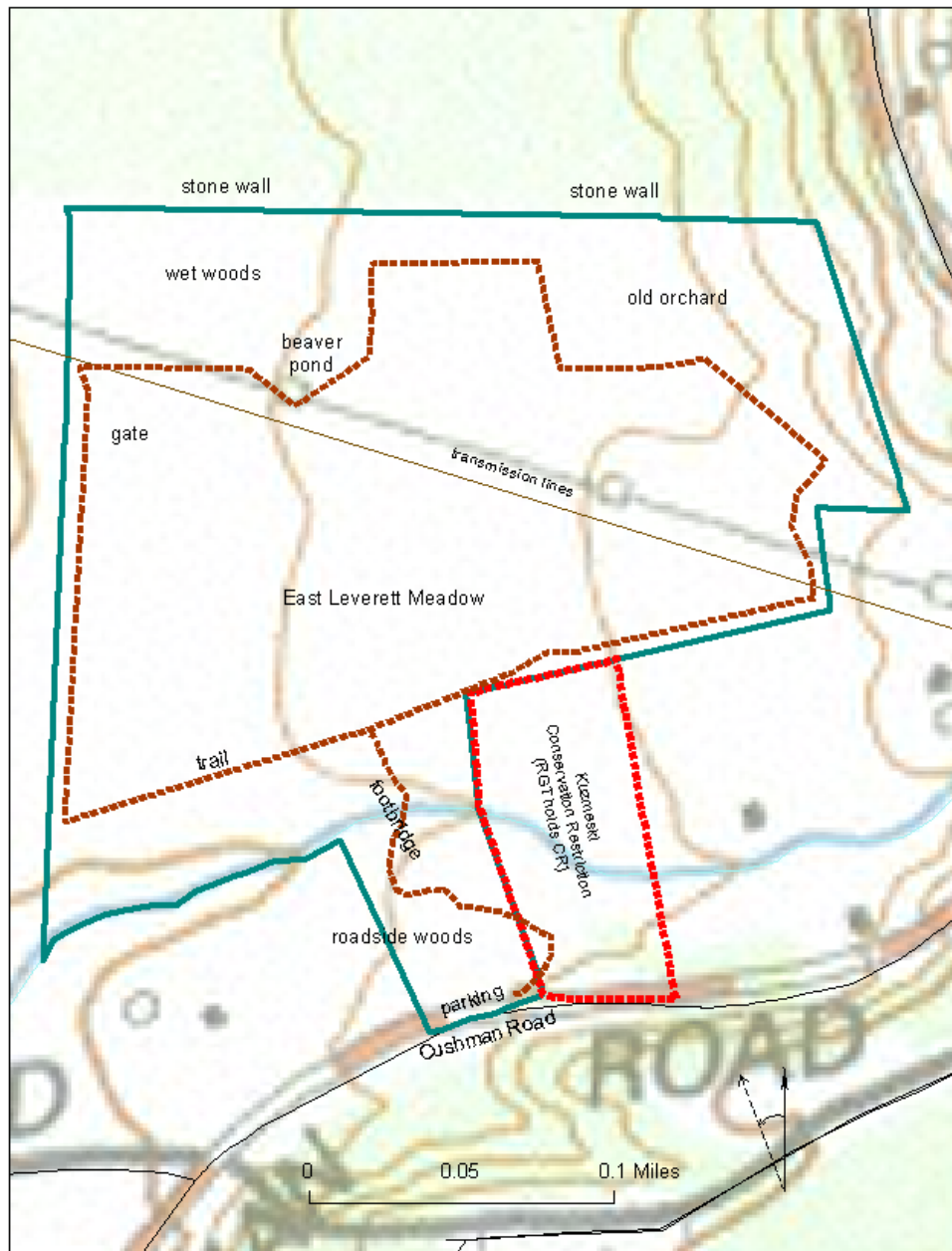


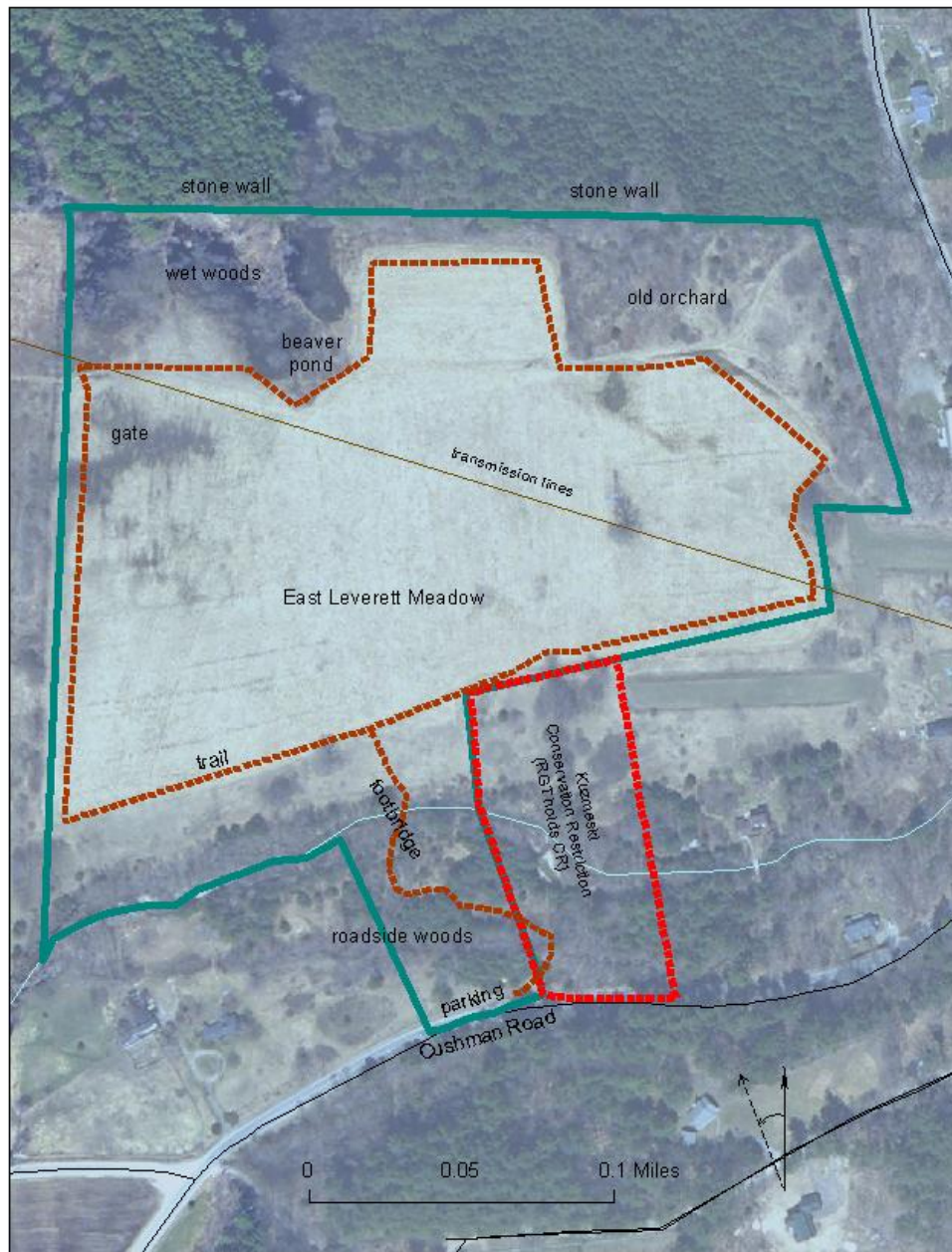
Kuzmeski Conservation Restriction														
Boundary and photo reference														
date	Latitude	Longitude	GPS acc in feet	monuments	line marked by	angle (degrees) from previous point	length (feet) from previous point	other descriptors	confidence in boundary markings?	recommendations	habitat, vegetation, geology?	photo #	photo date (see photo log baseline)	digital # (see photo log baseline)
9/7/2006	42.43713	-72.48595	28	stone bound sw corner	flagging from sw corner/road	along road	61 m	road corner, just left of multi- stemmed hardwood	high high at corners, low for boundary. Theoretically there is iron post 20 feet to south, never found, metal detector peeped		growing up field, pines, many invasive species	3.03 3.05 and B1	5/8/2003 f 9/1/2006	(B1=009)
9/7/2006	42.43861	-72.48648	31	stone bound nw corner	flagging	road to midstream meadow 4°	road to midstream 101.8 m 334.4 ft, midstream to meadow 63.6 m 208 ft	compass angle changes slightly mid-stream KCR/ELMS-W corner, also metal stake and bluebird box fence post	2 places (well, three but one tractor part) Cannot make line n-w match line s-n	may be find older survey? Adams to Kosloski B 935, p.140 differs from Kosloski to stirring b 1151, p.36,	unmown meadow (lots of gravel) south and east/west of corner, then mowed meadow north of corner	B2, B3, B4	9/10/2006 003 004 005	
9/7/2006	42.43802	-72.48417		stone bound se corner	flagging, edge of mowed meadow	78.4 m 257.27 ft			high high, even through iron pin south of stream not found (angle/fee/stone bounds exact)		line south of edge of grove of trees/shrubs	B5, B6, B7	006 004 9/7/2006 001	
9/7/2006			21	stone bound 140-150 ft east of culvert at road	flagging, ends at road	184°	169.5 m 556.26 ft	goes through sumac clone, pines to road			northern line growing up shrubs, then pines, to roadway	3.06 3.07	5/8/2003 f	

Kuzmeski Conservation Restriction



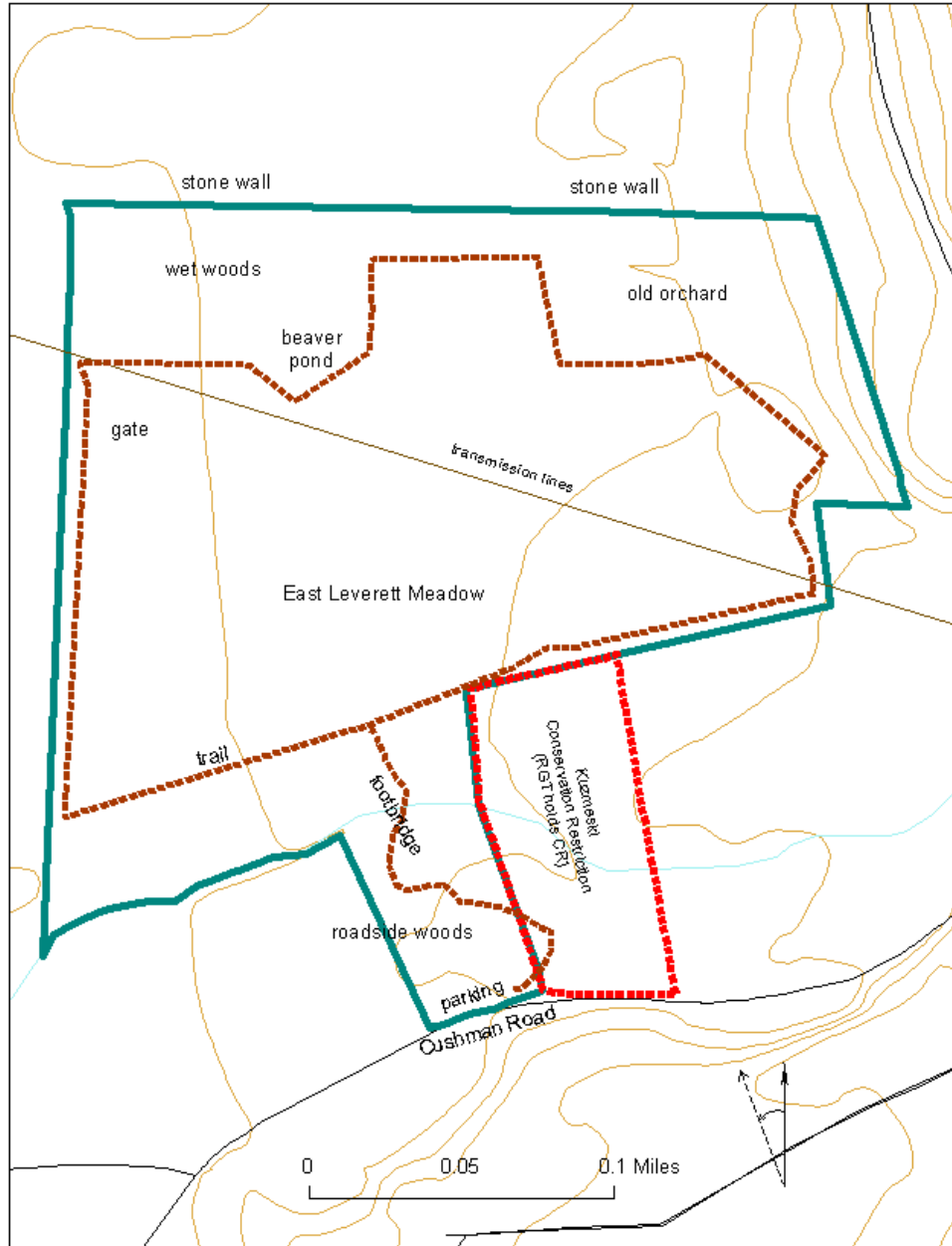
- Solid line = ELM owned by Rattlesnake Gutter Trust (28 acres)
- Dotted line = Kuzmeski Conservation Restriction (3 acres)
(land privately owned, with CR held by the Rattlesnake Gutter Trust)
- Brown line = edge of meadow and location of trail (about 22 acres)

Kuzmeski Conservation Restriction



- Solid line = ELM owned by Rattlesnake Gutter Trust (28 acres)
- Dotted line = Kuzmeski Conservation Restriction (3 acres)
(land privately owned, with CR held by the Rattlesnake Gutter Trust)
- Brown line = edge of meadow and location of trail (about 22 acres)

Kuzmeski Conservation Restriction



Solid line = ELM owned by Rattlesnake Gutter Trust (28 acres)
Dotted line = Kuzmeski Conservation Restriction (3 acres)
(land privately owned, with CR held by the Rattlesnake Gutter Trust)
Brown line = edge of meadow and location of trail (about 22 acres)

Kuzmeski Conservation Restriction, Assessor's Map, page8, lot 130



Assessor's Lot No. BA-3 N/Adams
S 74° 39' 40" E 1305.2'

James L. Glogier Assessor's Lot No. 7-50
N 14° 26' 30" E 1328.8'

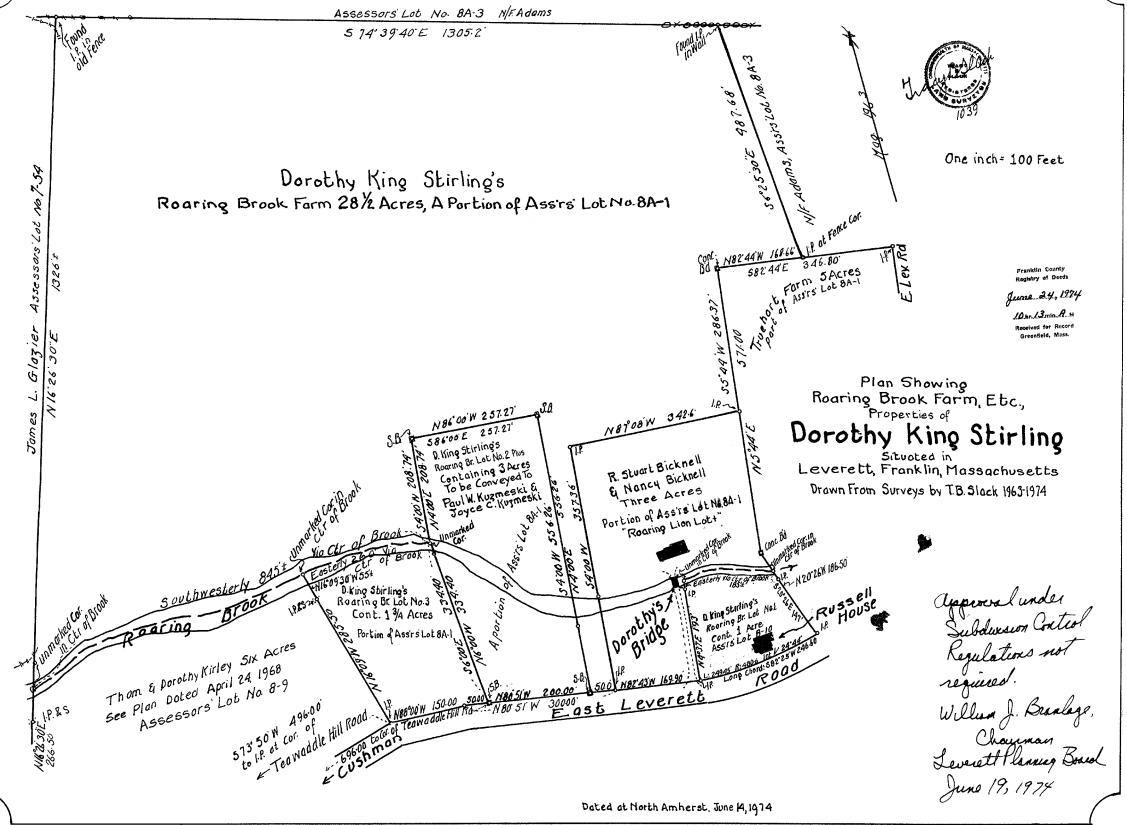
Dorothy King Stirling's
Roaring Brook Farm 28 1/2 Acres, A Portion of Assr's Lot No. BA-1



One inch = 100 Feet

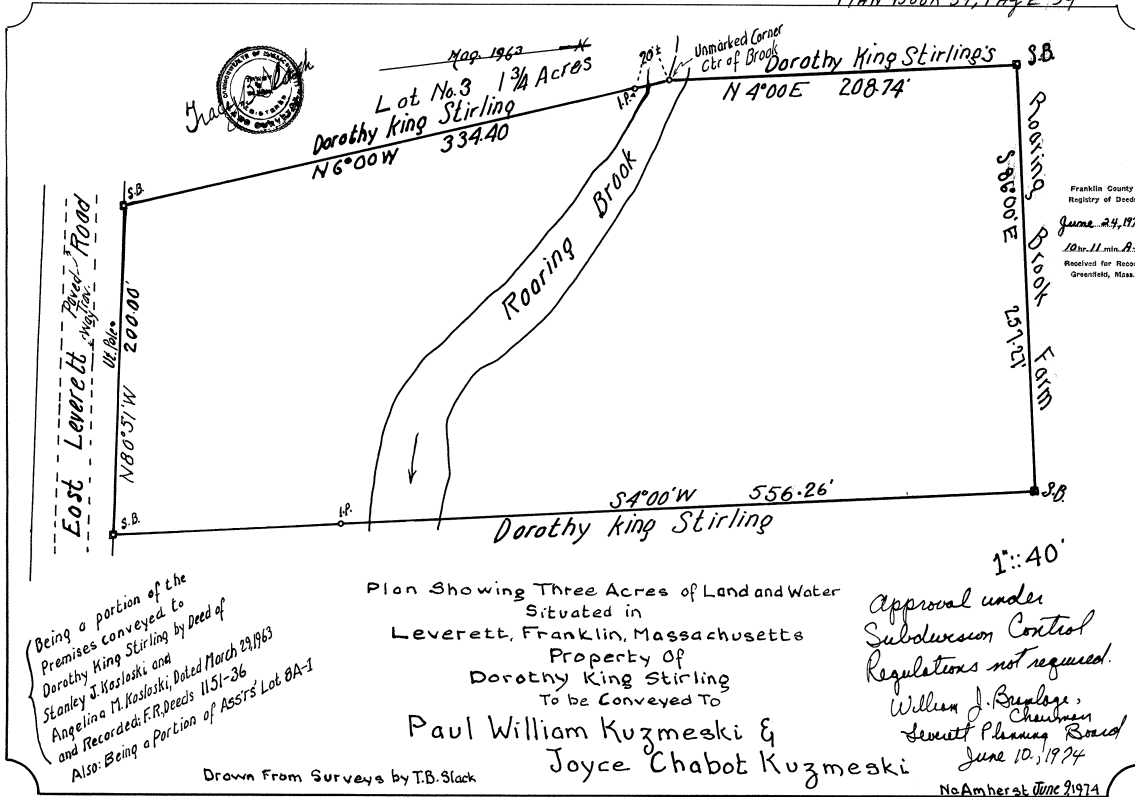
Franklin County
Registry of Deeds
June 24, 1974
John J. Kimball
Recorder for Record
Greenfield, Mass.

Plan Showing
Roaring Brook Farm, Etc.,
Properties of
Dorothy King Stirling
Situated in
Leverett, Franklin, Massachusetts
Drawn From Surveys by T.B. Slack 1963-1974



Approved under
Subdivision Control
Regulations not
required.
William J. Baulgo,
Chairman
Leverett Planning Board
June 19, 1974

Dated at North Amherst, June 14, 1974



Being a portion of the Premises conveyed to Dorothy King Stirling by Deed of Stanley J. Kasloski and Angelina M. Kasloski, Dated March 29, 1963 and Recorded: F.R. Deeds 1151-36 Also: Being a Portion of Assrs' Lot 8A-1

Plan Showing Three Acres of Land and Water Situated in Leverett, Franklin, Massachusetts Property of Dorothy King Stirling To be Conveyed To

Paul William Kuzmeski & Joyce Chabot Kuzmeski

1" = 40'
Approval under Subdivision Control Regulations not required.
William J. Boyle, Chairman
Seventt Planning Board
June 10, 1974

Franklin County Registry of Deeds
June 24, 1974
10:11 min. A.M.
Revised for Record
Greenfield, Mass.

Drawn From Surveys by T.B. Slack

No Amherst June 21 1974

Kuzmeski Conservation Restriction								
photo baseline				Note some photos deleted because of poor quality (some jpeg numbers missing)				
date	photo grapher	roll # or word album #	film or jpeg #	location	azimuth (m)	latitude	longitude	notes for future monitors
5/8/2003		3.03	f	Kuzmeski CR/ELM roadside line (stone)		42.4367	-72.48556	
9/1/2006	MAW	B1	009					
5/8/2003	MAW	3.05	f	standing across road, looking along line (paper behind stone)	254			
5/8/2003	MAW	3.01	f	Standing on KCR/ELM line at water's edge looking upstream, can barely see sandbar				
5/8/2003	MAW	3.02	f	Same place looking downstream to bridge				
5/8/2003	MAW	3.06	f	stone marking KCR/Seaman-Williams road corner		42.4387	-72.48648	
5/8/2003	MAW	3.07	f	standing across road, looking along KCR/S-W line (paper behind stone)	4			stone is 140-150 feet from culvert to the east
5/8/2003	MAW	3.08	f	standing across road from ELM looking along KCR roadside land				
		word file	jpeg #					
9/10/2006	MAW	B2	003	stone post at white post, looking east along line		42.43787	-72.48648	
9/10/2006	MAW	B3	004	same place, stone itself (dug up, now marked with tape)				
9/10/2006	MAW	B4	005	at corner looking south along line				
9/7/2006	MAW	B5	006	stone marking KCR/Seaman-Williams meadow corner	270	42.4367	-72.48556	There is also iron pipe and fence post with bluebird box
9/7/2006	MAW	B6	004	KCR-SW line, looking south at dogwood clone, picture taken 24 meters from meadow end	184			line goes through cherry stream behind Bill Wilson
9/7/2006	MAW	B7	001	KCR-S-W line, viewed from NE	220			

B1. Sept 1, 2006 009
42.43713 -72.48595
Kusmeski CR sw corner (monitoring)
taken from across road, looking along line



B2. September 10, 2006 003
42.43787 -72.48648
stone post at white post
looking east along line
(next corner beyond trees)



B3. September 10, 2006 004
same place, stone itself



B4. September 10, 2006 005
same place, looking south along line



B5. September 7, 2006 006
42.4367 -72.48556
stone at ne corner



B6. September 7, 2006 004
looking south along KCR/S-W line



B7. September 7, 2006 001
looking along KCR/S-W line
south of dogwood clone (B6) heading
into pines

