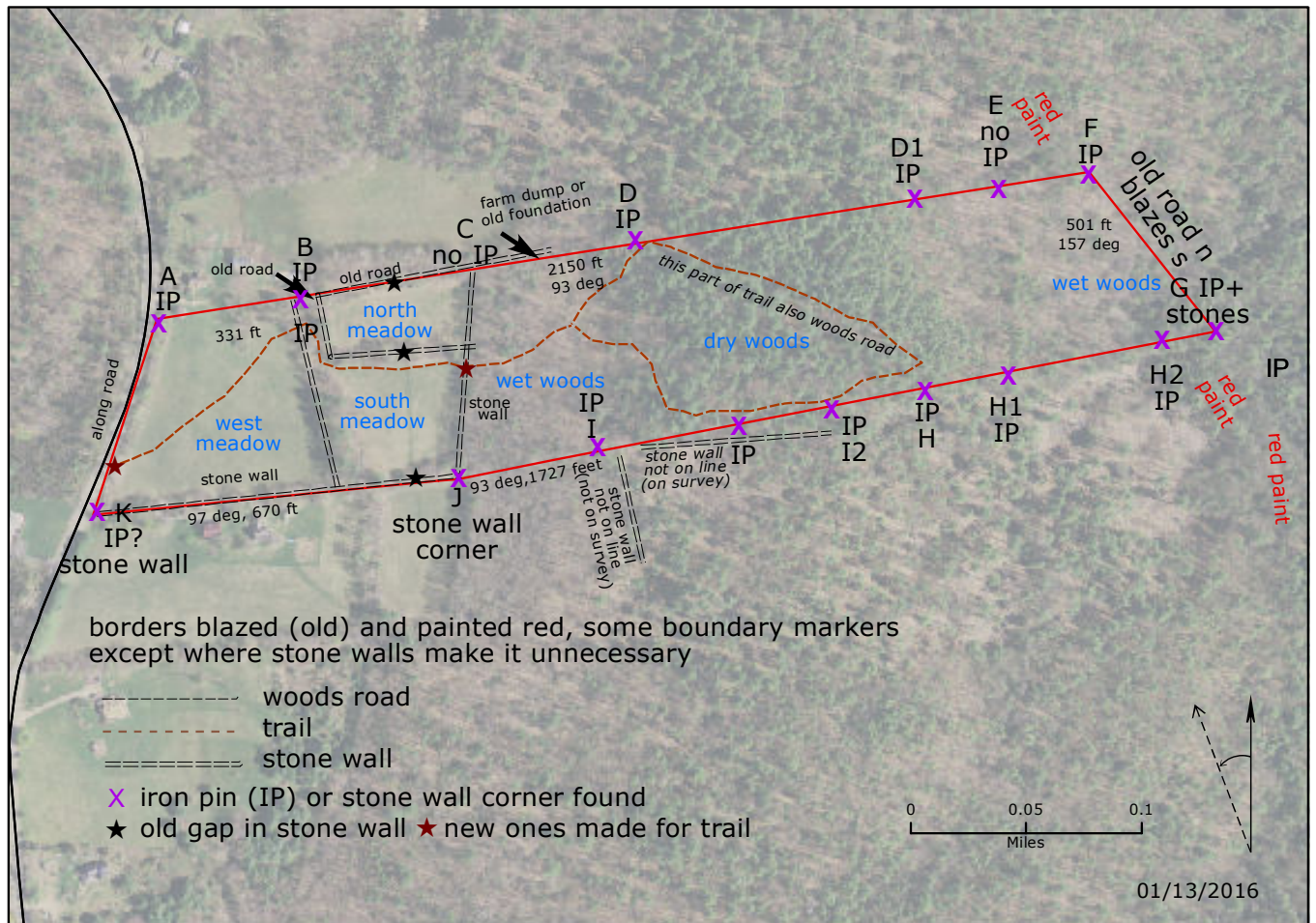


Ellamoose Repose for Monitoring



- A. NW corner on road at edge of stone wall, iron stake, 42.49396, -72.49554
- B. N edge, iron pipe, 42.49409, -72.494299
(this first section of line does not follow land use or stone walls, stone wall begins here, line easier to follow to the east). There is an road visible between two stone walls.
- C. End of meadow, near stone wall which does not follow line. Boundary line painted on old blazes.
- D. Trees blazed to ne corner, stone wall ends here 42.49450, -72.491443
- D1. Lot to north heavily logged/thinned, 42.494818, -72.489092
- E. pin on survey, did not find
- F. Pin, northeast corner, beyond logging, 49.494968, -72.487613, east line blazed (old) and painted (old and new). Line going north also blazed red.
- G. Southeast corner, large iron pipe/stones, 42.493944, -72.486624, east line is blazed. Line going south is also painted red (confusing)
- H2. On flat land can see G through the trees. 42.493903, -72.486979
- H1. On slope 42.493655, -72.48829
- H. Pin just west of trail/woods road, 42.493557, -72.489013.
- I2. Very short pin at south edge of trail, about 10 feet inside blazed line 42.493461, -72.48979 line up with E end of large stone wall off property
- I1. mid stone wall 42.49335, -72.490609
- I. West of off-site E-W and N-S stone walls., 42.493216, -72.491778
- J. Beginning of stone wall on line, 42.49299, -72.492942. wall continues on line to road
- K. Southwest corner, stone wall corner at road, 42.49274, -72.496029