

Baseline Documentation Report: Ellamoose Repose: Part 2

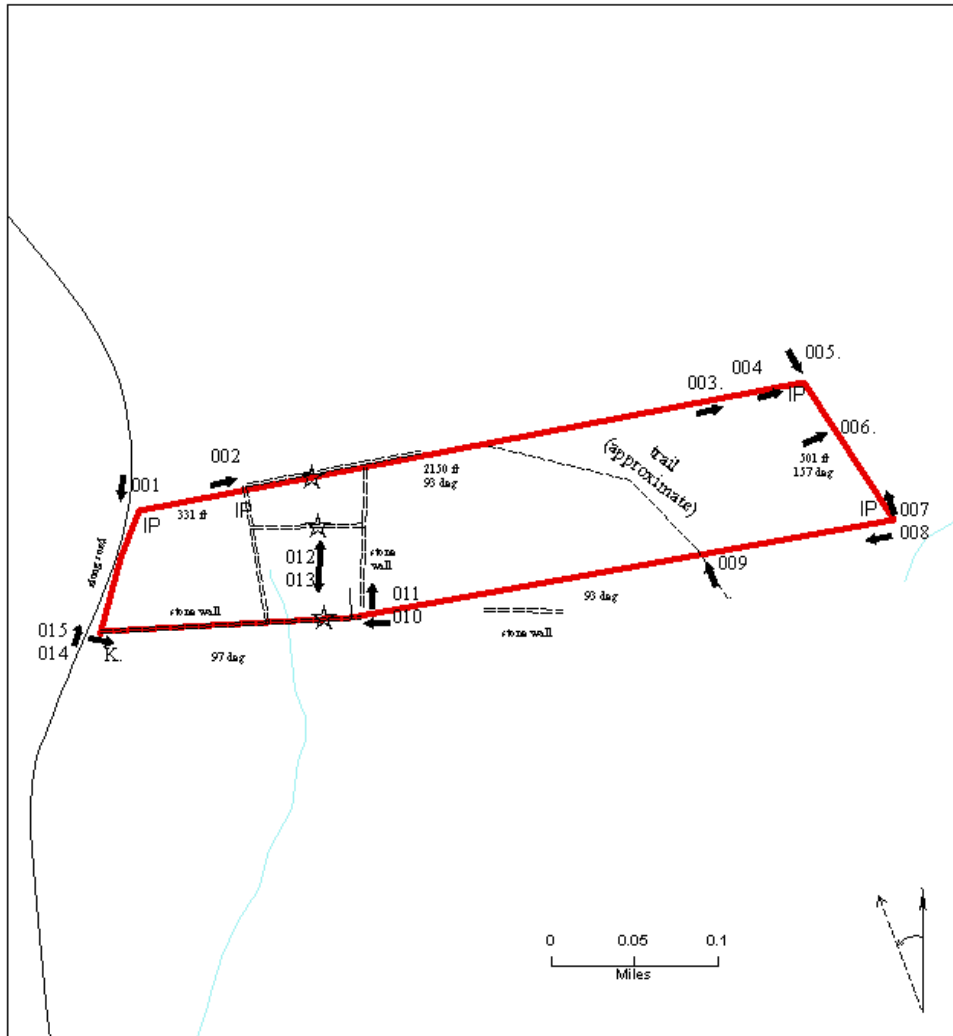
Deed Abstract: Ellamoose Repose

Gift from Elise W. Kroeber to the Rattlesnake Gutter Trust

Recorded: Franklin County Registry of Deeds: Book 5672, p 205, May 15, 2009

Abstract: Describes boundaries as shown in survey (1983), subject to restrictions from Western Counties Electric Company right-of-way (1931) and relocation of Cave Hill Road (1957).

No other restrictions in the deed.



Ellamoose Repose
Key to boundary line pictures

Ellamoose Repose							
date	photographer	photo #	jpeg #	location	azimuth	Latitude	Longitude
1. Boundary Line Photographs							
5/18/2009	M.A.Wilson	001	001	nw corner, iron pin	93	42.49396	-72.49554
5/18/2009	M.A.Wilson	002	002	iron pin along only	93	42.49413	-72.49422
5/18/2009	M.A.Wilson	003	006	difficult part of line	93	42.49499	-72.48833
5/18/2009	M.A.Wilson	004, 005	007, 008	heavy logging	93, 157	42.49502	-72.48766
5/18/2009	M.A.Wilson	006	010	iron pin, ne corner	273 approximately		
5/18/2009	M.A.Wilson	007, 008	011, 012	embedded barbed wire fence along boundary	157, 273	42.49387	-72.48647
5/18/2009	M.A.Wilson	009	013	iron pin/rocks, se corner	183 (approximately)	42.49358	-72.48886
5/18/2009	M.A.Wilson	010,011	019, 021	blaze, pin 20 ft w. on trail	277, 183	42.49305	-72.49285
5/18/2009	M.A.Wilson	014, 105	030, 031	w.end of stone wall on property line	183 approx, 277	42.49275	-72.49605
5/19/2009	M.A.Wilson	016	050	stone wall corner at road, sw corner	270 approx	42.49323	-72.49143
				west end of stone wall south of boundary (not on the property)			
2. Habitat Photographs							
5/19/2009	M.A.Wilson	101	034	shrubs, road edge			
5/18/2009	M.A.Wilson	102	053	shrubs, meadow edge			
4/18/2009	M.A.Wilson	103	006	ragged robin			
5/18/2009	M.A.Wilson	104	029	wild geranium			
5/18/2009	M.A.Wilson	105	028	meadow flowers			
5/18/2009	M.A.Wilson	106	022	se meadow looking toward opening in stone wall			
5/18/2009	M.A.Wilson	107	009	tree with hole			
5/18/2009	M.A.Wilson	108	015	star flower			
5/19/2009	M.A.Wilson	109	035	mt laurel thicket			
5/19/2009	M.A.Wilson	110	036	hemlock grove			
5/19/2009	M.A.Wilson	111	040	fringed polygala			
5/19/2009	M.A.Wilson	112	041	ferns			
5/19/2009	M.A.Wilson	113	044	field pine+hardwood			
5/19/2009	M.A.Wilson	114	045	squirrel midden			
5/18/2009	M.A.Wilson	115	013	s. end of n-s trail		42.49358	-72.48886
5/19/2009	M.A.Wilson	116	046	n end of n-s trail		42.49454	-72.49139
5/19/2009	M.A.Wilson	117	047	stake a boundary, n. end of trail			
5/18/2009		118	022	gaps in stone walls, sw to nw field. Lat/long for gap between meadows	north	42.49332	-72.49285
5/18/2009		119	023	gaps in stone walls, sw to neighbors field	south		

Ellamoose Respose Boundary Line Pictures

001. NW Corner
looking south along road.
Stake in front of Bill Wilson.
5/19/2009
42.49396, -72.49554



002. N line
looking East along line (93 deg)
Old road with stone walls to north;
stone wall to south
(Property line in this western part of
line does not follow historic land use)
5/19/2009
42.49413, -72.49422



003. North line at edge of logging,
looking south along blazed line (93 deg).
Line blazed all along logging operation
(all along forested area).
5/18/2009
42.49499, -72.48833



004. Iron pin, northeast corner
looking east.
5/18/2009
42.49502, -72.48766



005. Same Iron pin as 004, northeast corner,
looking east toward logging area in
picture 003.
5/18/2009



006. Along east line,
fence line well-embedded
5/18/2009



007. Iron pin southeast corner looking north
along line (337 deg).
This end of east line almost follows stream/seeep
5/18/2009
42.49387, -72.48647



008. Same iron pin as 007 southeast corner
looking west along line (273 deg).
5/18/2009



009. Looking north across south line.
Line blazed where woods roads cross
one of iron line pins 30 feet to east.
5/18/2009
42.49358, -72.48886



010. Beginning of massive stone wall
that follows south boundary line all
the way to Cave Hill Road
(less massive later).
Looking north (273 degrees).
(At next meadow, line changes to 277 deg.)
5/18/2009
42.49305, -72.49285



011. Same corner as 010. stone wall
looking north along back/east edge of meadows.
5/18/2009



012. From middle of southeast meadow.
Gap in stone wall to north.
Second meadow to the north.
5/18/2009



013. Same place as 012
looking south to gap in stone wall
to next property to the south.
5/18/2009



014. Southwest corner with road
Stone wall corner, looking east.
5/19/2009
42.49275, -72.49605



015. Same Southwest corner as 014
looking north along road
with Joan Godsey.
5/19/2009



016. West end of stone wall south of property line (shown on survey plan). The only iron post shown on survey that was not found was/should have been near the east end of this wall.

Looking south from property line.
42.49323, -72.49143



Ellamoose Repose Habitat Pictures, 5/18/2009 and 5/19/2009

Note: bird sightings and vegetation list done only while walking boundary lines, would be more extensive lists if surveys were done.

Hedges, shrubby along meadows, stone walls:

On May 19, 2009: Saw female Eastern Towhee feigning injury to lead us away from nest, flushed Ruffed Grouse and Gray Catbird.



101. along Cave Hill Road



102. along meadow edge

Meadows: On May 18, 2009 heard American Robin, Field Sparrow. Note others walking the land have seen and heard bobolinks.



103. Ragged Robin



104. Wild Geranium



105. Meadow Flowers

106. SE Meadow looking toward opening in stone wall

Forest

On May 18 and 19, 2009, in dry and wet forest, heard Yellow-bellied Sapsucker, Hermit Thrush, Magnolia Warbler, Black-throated Blue Warbler, Blackburnian Warbler, Yellow-rumped Warbler, Black-throated Green Warbler, Pine Warbler, Ovenbird, Scarlet Tanager, Slate-colored Junco. Barred Owl.



108. Star Flower

107. Wildlife Habitat

109. Mt Laurel
thicket



110. Hemlock Grove



111. Fringed Polygala



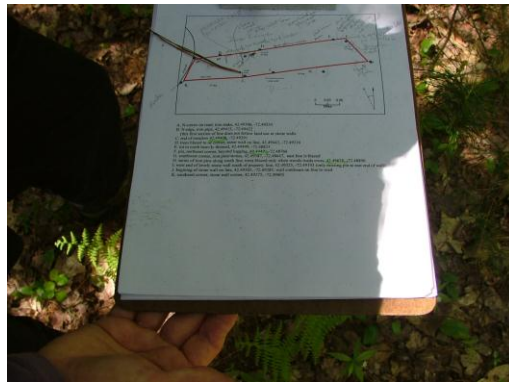
112. Woodland Ferns



113. Field Pine and Hardwoods



113. Squirrel Picnic Midden



114. Snow Fleas on White Paper left on the leaf litter.

Wet forest



115 Hellebore, meadow beyond



116. Hellebore by seep



117. Violets



118. Jack-in-the-Pulpit and Royal Fern

Wet forest also includes winterberry and arrowwood.

Present Trails and Stone Wall Openings

Woods Trail: north-south



116. At southern boundary looking north
42.49358, -72.48886

117. At northern boundary looking south
42.49454, -72.49139

Meadow Trail: north-south



118. Looking north

119. Looking south

Pictures taken from middle of southwest meadow, looking at opening in stone wall. There is also a gap to the north.

There is also an opening for an east-west trail between the west and east meadows.
42.49379, -72.49339

At present there is no opening in the stone wall along Cave Hill Road