

Baseline Documentation Report:

Ellamoose Repose

Gift from Elise W. Kroeber

to the

Rattlesnake Gutter Trust

May 15, 2009

Report completed June 14, 2009

Note: all maps are prepared in Archview 9 using MassGIS layers, photographs are in Word files, charts are in Excel. There are 2 electronic copies of the baseline report. One in the archive notebook at the Leverett Family Museum and the other in the field notebook kept by one of the members of the RGT Board or Property Committee. There is a signed CD of the digital photographs in the archive notebook.

Baseline Documentation Report: Ellamoose Repose

Table of Contents

1. Location of Kroeber Conservation Area on Cave Hill Road, Leverett	p.4
p. 1.1 Map with directions	
p. 1.2 Chart with directions, brief land description	
2. Maps of Kroeber Conservation Area	p.6
p. 2.1 Map of both the Kroeber property and Nearby Protected Areas	
p. 2.2 2005 Orthophoto map of the Kroeber Property	
p. 2.3 Topographic map of the Kroeber Property	
p. 2.4 Survey of Kroeber Property	
p. 2.5 Map of Kroeber Property with Natural Heritage Priority Habitat mapping	
Part 2	
3. Abstract and Deed: Elise W. Kroeber to the Rattlesnake Gutter Trust	p.11
4. Photographs of property line and relevant natural resources	P.12
p. 4.1 Map of Location of Boundary Line Photographs	
p. 4.2 Chart of Photo Log for Boundary Photographs (and Habitat/Trails)	
p. 4.3 Photographs of Boundaries	
p. 4.9 Chart of Photo Log for Habitat and Trails (with Boundary Photos)	
p. 4.11 Photographs of Habitat and Trails	
Part 3	
5. Boundary Information (also see <i>Section 4. Photographs</i> and <i>A2. Neighboring Deeds</i>)	
p. 5.1 Map of boundaries	
p. 5.2 Chart of boundary locations	
6. Signature Pages	
p. 6.1 Photographer	
p. 6.2 Report Writer	

Appendices

A1. Assessor's Map (page 1)

A2. Neighboring Deeds

p. A2.1 Map

p. A2.2 Chart

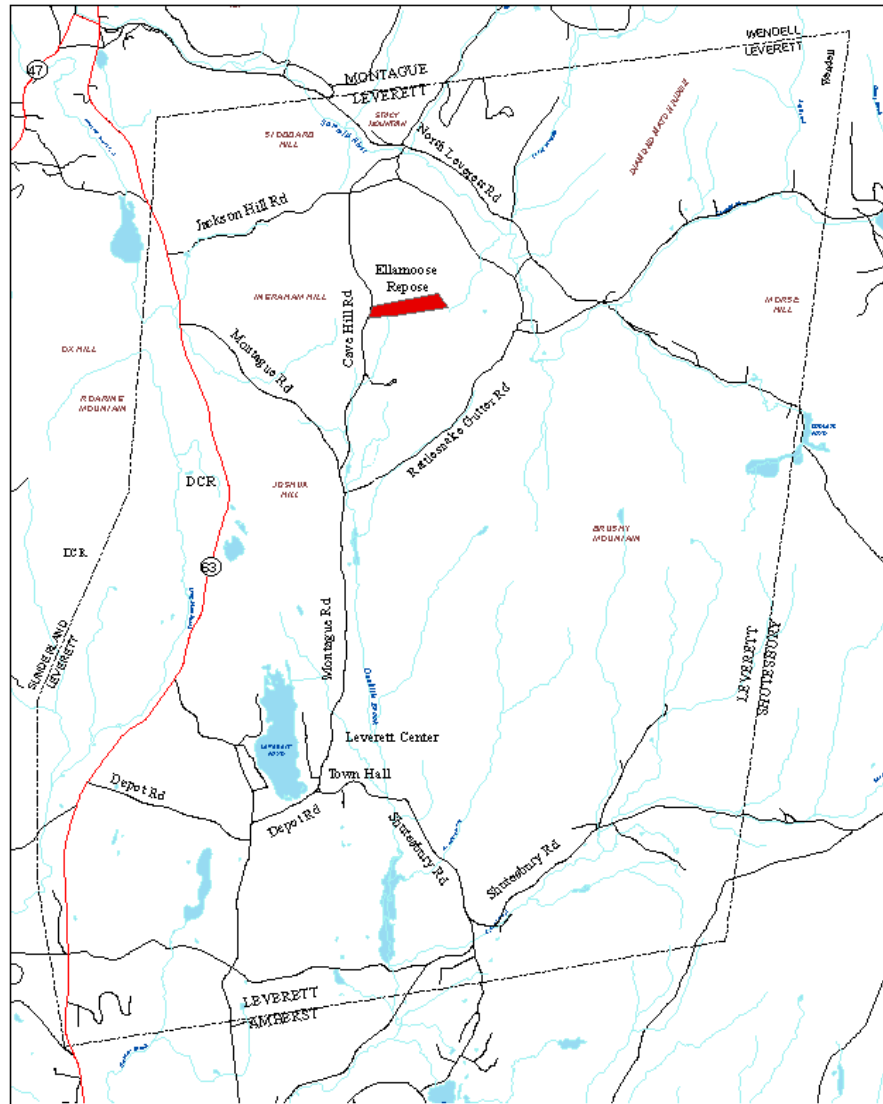
Deeds (in separate pdf files)

p. A2.3 Diane Crowe

p. A2.6 Thomas Benander

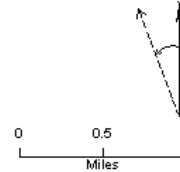
p. A2.8 Warren Harris Morgan

Directions to Ellamoose Repose



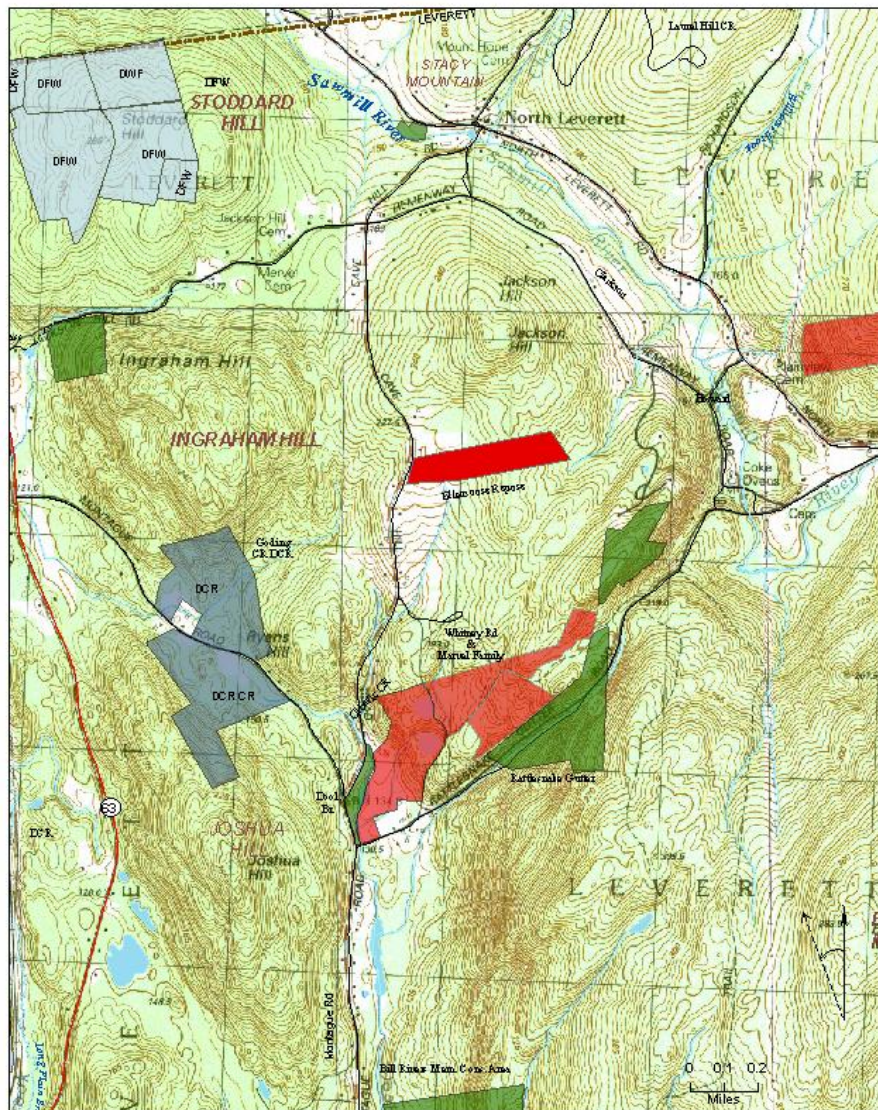
Directions to Ellamoose Repose:

From Leverett Town Hall, go north (you will be on Montague Road) 1.8 miles.
Turn right/east on Cave Hill Road and continue for 1 mile.
Ellamoose Repose is on the right/east. (Parking/pull-off area and trail being developed.)



Ellamoose Repose	
land description	
location/street address	between 66 and 78 Cave Hill Road
directions to site	Directions: From North Amherst, take Route 63 three miles north to Depot Road on the right. Follow Depot Road (after one mile it turns sharply left then right) into the center of Leverett (church, town hall). You are now on Montague Road. Continue north for 2 miles, passing the elementary school and Rattlensnake Gutter Road, to Cave Hill Road. The property is between the mailboxes at 66 and 78 Cave Hill Road.
acreage	24.5
structures	none
physical description	West end near Cave Hill Road includes 3 meadows bounded by stone walls. Eastern 2/3 is forested. The eastern and western sections of the woods are low/wet; the middle section is slightly higher and drier.
special habitat(s)	meadows, shrub edges, dry and wet woodlands.
special species(s)	forest birds include most that are found in Leverett.
special views(s)	Within meadows: views of fields and openings in stone walls. From Cave Hill: view of stone wall and meadows/forest
special other	The gift of this land protects a property which could have been developed as house lots. It offers opportunity to preserve a traditional New England pattern of land use: meadows bounded by stone walls and woodlands - both wet and dry forest habitats.
notes	The boundaries, which are very easy to follow, were recently re-blazed and painted. It will be easy for the Trust to monitor this land.

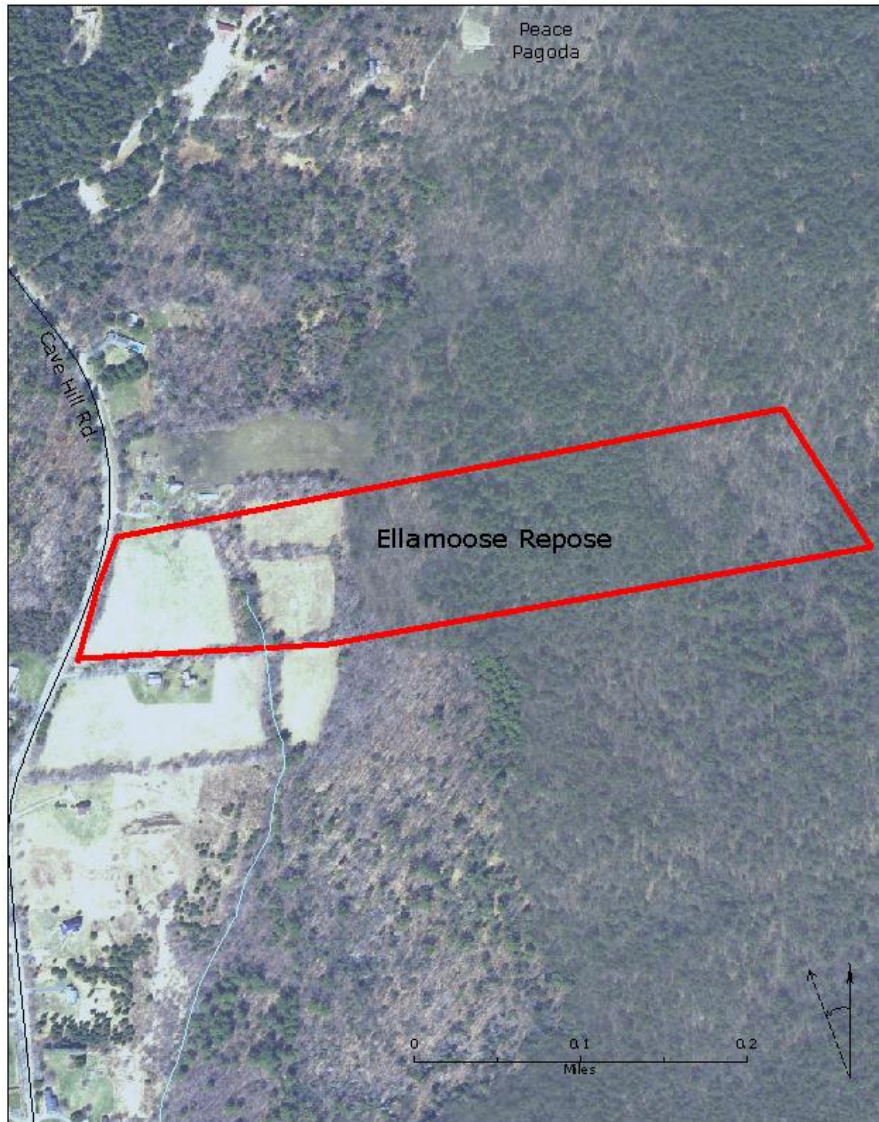
Ellamoose Repose and Nearby Protected Areas



- * Certified Vernal Pools as of Feb 2009
- ▨ Nat. Heritage Priority Habitat as of Sept 2008
- Rattlesnake Gutter Trust
- Other land trusts (Franklin Land Trust, Kestrel Trust, Mt Grace Land Conservation Trust, Valley Land Fund)
- Town of Leverett
- State (UMass, Dept. of Cons. & Rec., Div. of Fisheries & Wildlife)
- Protected land in adjoining towns

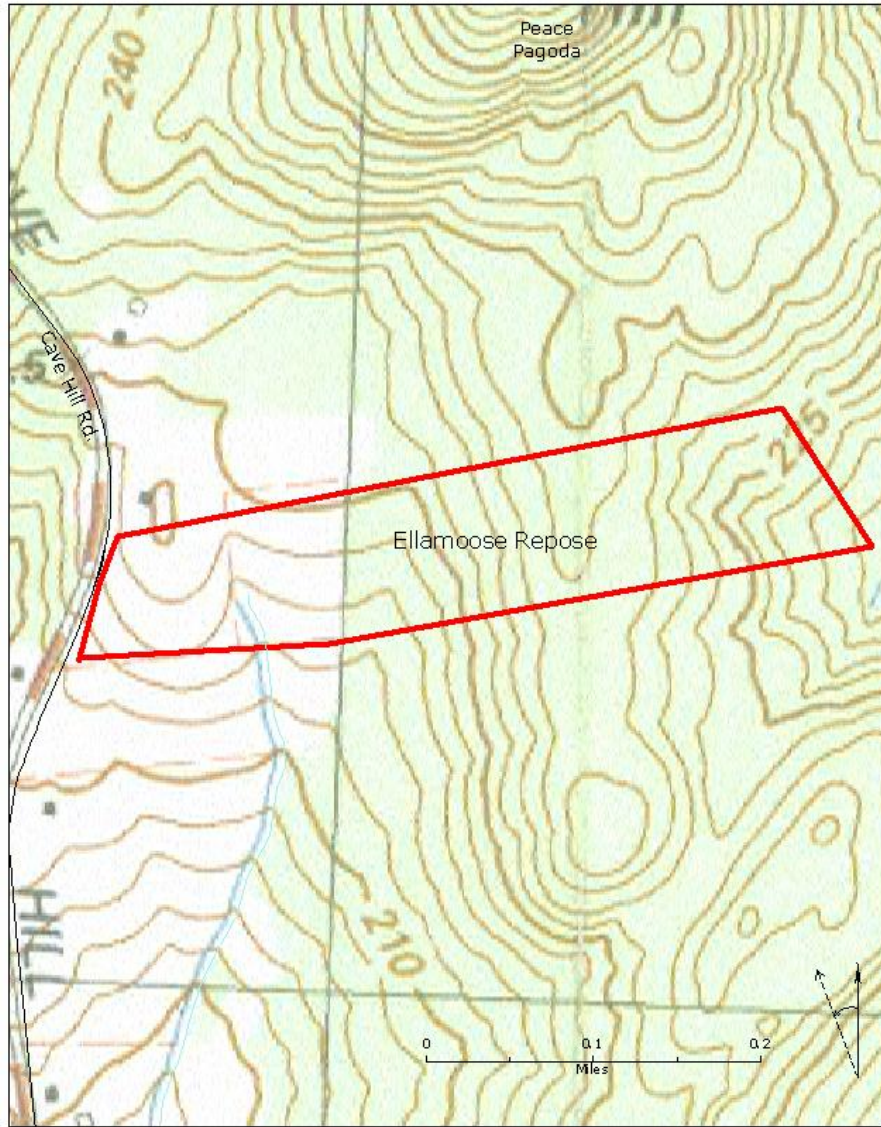
May 2009

Ellamoose Repose



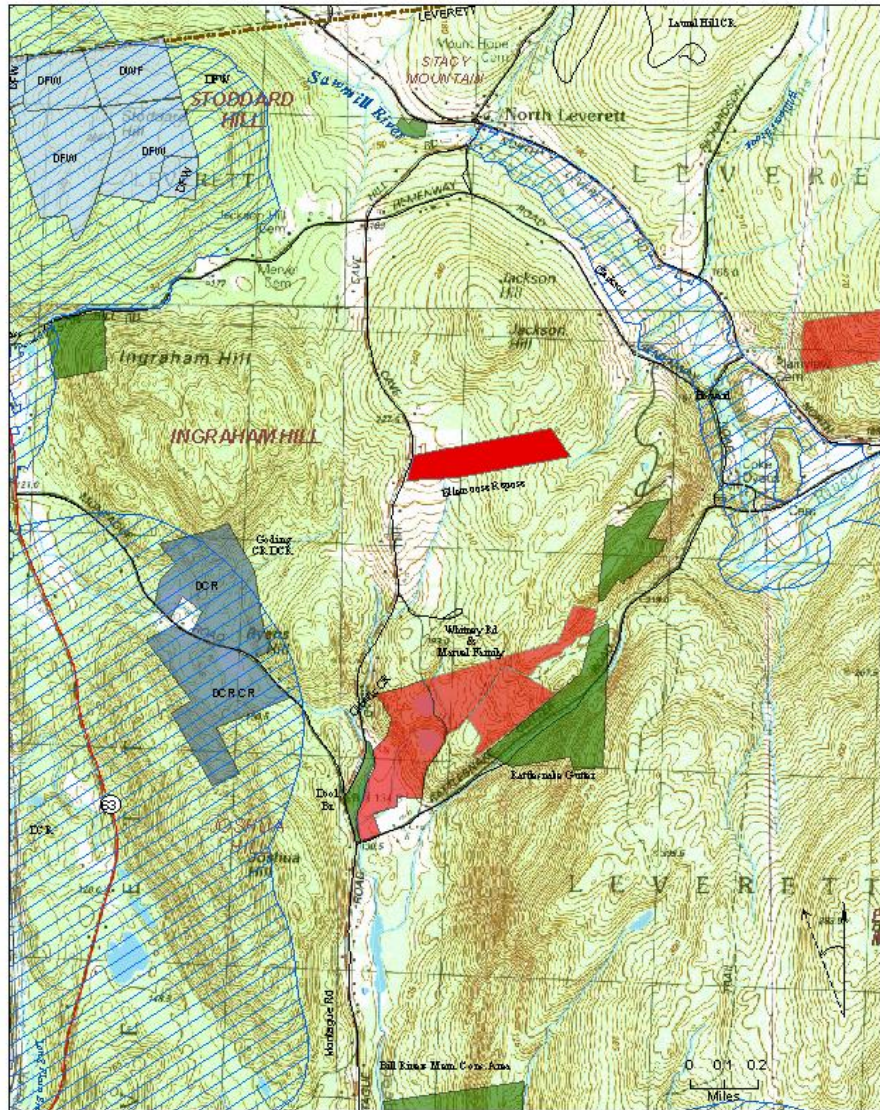
Ellamoose Repose (owned by the Rattlesnake Gutter Trust).

Ellamoose Repose



Ellamoose Repose (owned by the Rattlesnake Gutter Trust)

Ellamoose Repose NHESP Priority Habitat



- * Certified Vernal Pools as of Feb 2009
- ▨ Nat. Heritage Priority Habitat as of Sept 2008
- Rattlesnake Gutter Trust
- Other land trusts (Franklin Land Trust, Kestrel Trust, Mt Grace Land Conservation Trust, Valley Land Fund)
- Town of Leverett
- State (UMass, Dept. of Cons. & Rec, Div. of Fisheries & Wildlife)
- Protected land in adjoining towns