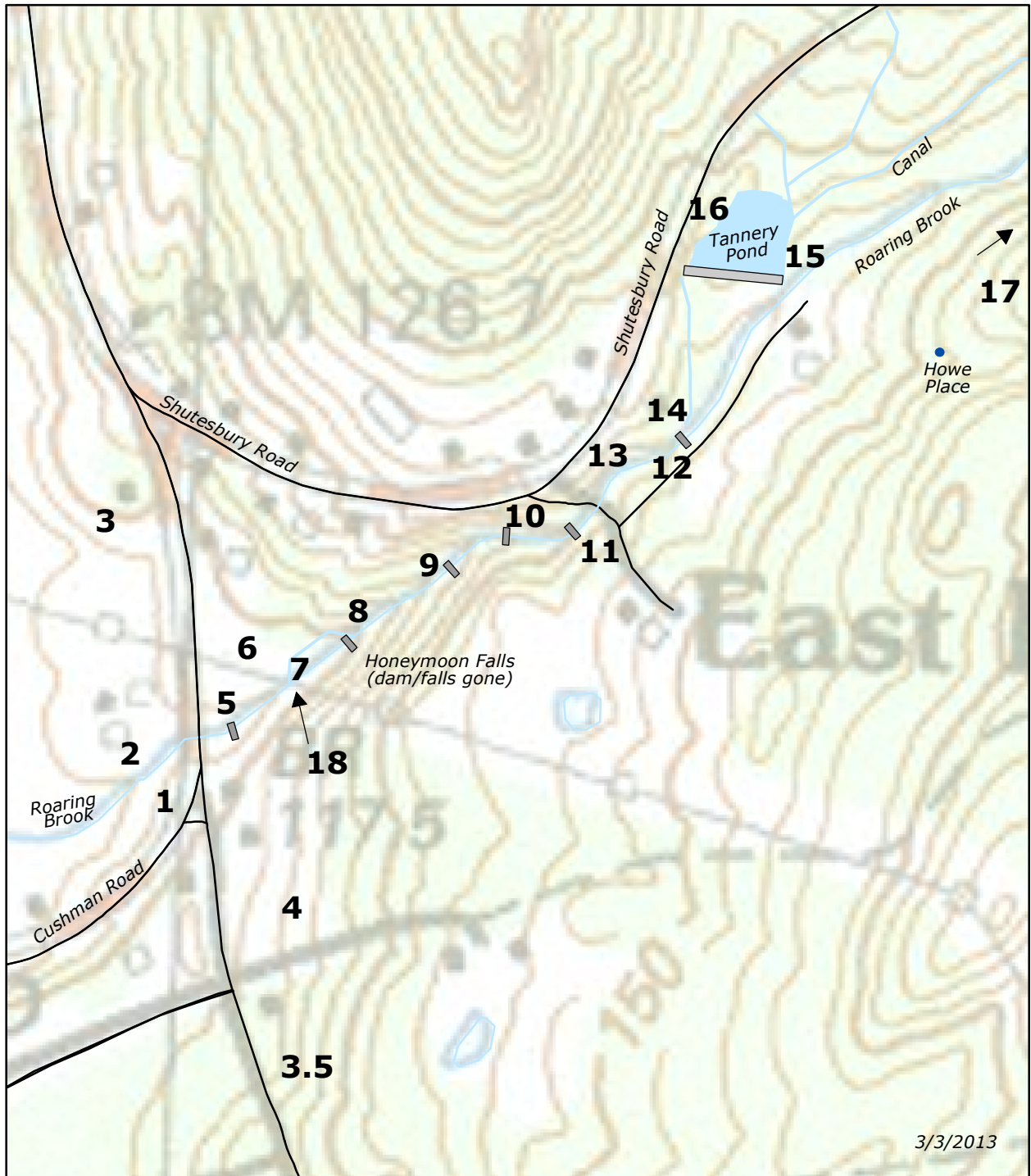


# East Leverett Mills: Key by John Foster

Note: Not all mills operated simultaneously and often mills were used for different products over time. Approximate dam locations are shown as grey rectangles. There were ponds behind the upper dams (remains of the Tannery Pond can be seen from Shutesbury Road). In the lower, steeper section, each dam channeled water directly to a wheel (or later a turbine).



- 1. Soap
- 2. Scythes
- 3. Brandy
- 3.5 Gin
- 4. Cards
- 5. Turnings
- 6. Boxes
- 7. Grist
- 8. Machine Shop
- 9. Turnings plus Hoes and Scythes

- 10. Sawmill, then Wool
  - 11. Blacksmith
  - 12. Wool
  - 13. Fulling
  - 14. Blacksmith
  - 15. Tannery
  - 16. Wool/Satinet
  - 17. Sawmill about  $\frac{3}{4}$  mile upstream
  - 18. Possibly combined with Hoes and Scythes
- Note: not all mills were operating simultaneously

