

Monitoring Report, East Leverett Meadow

6:30 PM, Thursday, June 23, 2011

Present: Gwyn Mitchell, Sheila Seaman, Steve Weiss, Mary Alice Wilson

The goal of our management meeting was to begin putting up the diamond-shaped boundary signs around the property. But of course, that meant knowing where all the corners were. This description includes both the work done that evening – it has been raining and we were soaked by the time we finished – and a second trip made the next day by Bill and Mary Alice Wilson with the survey map, meter tape, and ribbon. It does not include a planned walk with Joe Sincuk after the leaves are off to determine the approximate corner in mid-stream. This report also includes the status of the signs and painted border line along each border.

For more information on the corners/lines, see ELM Boundary Lines, Updated June 25, 2011 and the excel file of the boundaries. Both are in the Field and Archive Notebooks (and attached).

Cushman Road Corners

1. SE corner is shared with Kuzmeski CR. There is a painted stone.
2. SW corner is share with Chester Cramer. No pin was found (possibly hit in mowing), it is essentially where the easternmost of his maple trees is standing.

West Boundary Lines

3. Line from Cushman Road to Roaring Brook – straight line marked by old electric fence, needs to be painted and signed
- 4.. Corner is mid-stream. No pin, but if the line were continued it would run west of the meadow-edge hickory tree, right about where the bluebird boxes are at the moment. (The line turns and goes down the middle of the stream to the Sincuk/Jones corner.
5. Corner with Sincuk-Jones. Since they are moving back, it was decided to walk that area with them before setting the corner. Line follows fence line to the Sincuk-Jones/Elm/Adams corner

North Boundary Line

6. Corner is in wetland, marked by fence posts and pin, Line then follows stone wall to a place in the orchard, very near the access/woods road (iron pin in the stone wall).

East Boundary Line

7. Line angles NE below “tavern” coming out at a corner fence post. (This is incredibly difficult walking. It had been cleared by the tavern folks and has grown up into roses, thorns, prickles, and other impediments to walking.

8. The line then jogs west, ending in the middle of a tree “island” where there is a stone bound

9. Line turns NE following the Truehart fence line to a bent pin.

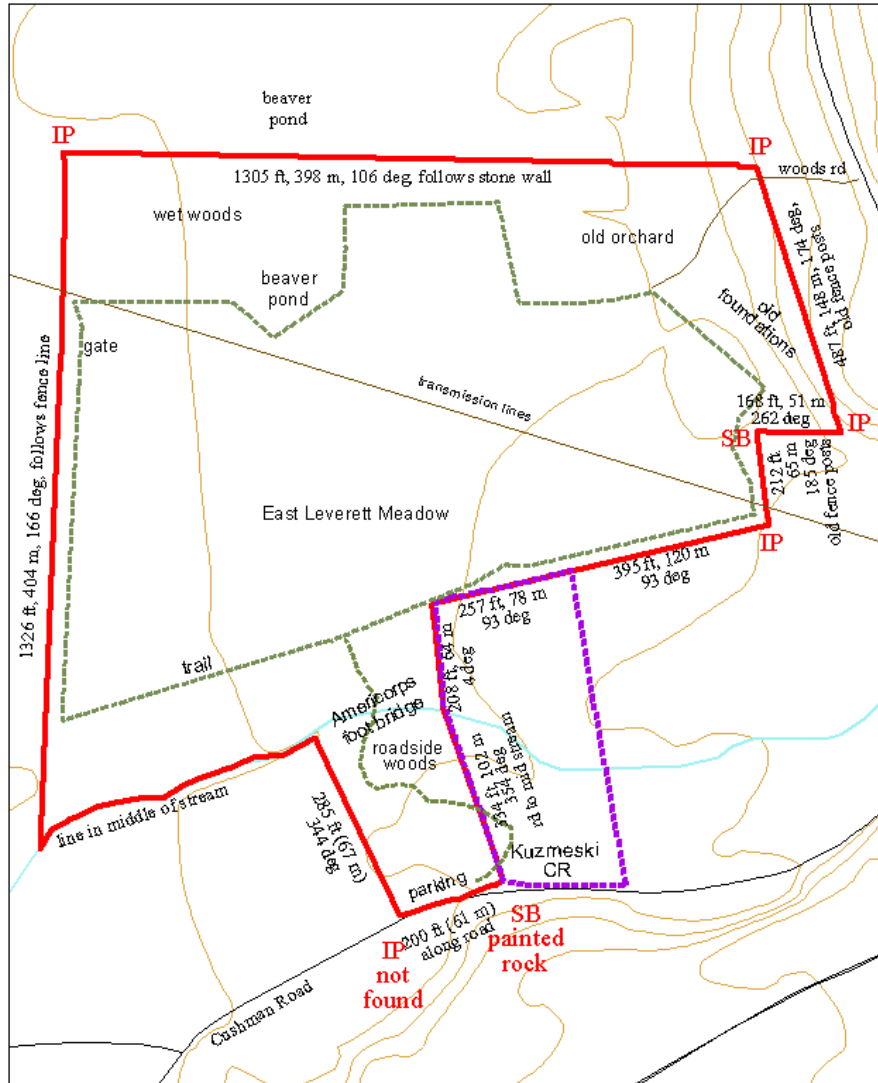
10. Southern Boundary in Meadow section. straight line west at edge of Seaman-Williams/Kuzmeski CR corner (iron pin) and continues along KCR to white post.

11. Line turns south through non-meadow area. In the middle of the stream, line bends slightly, and continues to Cushman Rd (part of tail into ELM is on Kuzmeski CR.

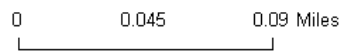
Note: for the record, separate from our walk, we have spent many, many hours dealing with the effects of the plane crash in early December 2010. The plane, in attempting to land, caught a where on the optical cable wire strung along the top of the poles. One person died on impact, another a few weeks later. In the spring, National Grid had to restring the cable system – which required both an intense 10 days of work and lots of heavy equipment. In addition, there was a fuel spill when one of the plane’s two gas tanks ruptured and this was cleaned up by New England Environmental Inc. Wm Lyons Whitten was project director. The final report was received September 30, 2011. Copies of the pdf file on disk (it is very long) are in the Archive and Field Notebooks.

Mary Alice Wilson, October 19, 2011

East Leverett Meadow



red line = ELM owned by Rattlesnake Gutter Trust (28 acres)
 Dotted purple line = Kuzmeski Conservation Restriction (3 acres)
 dashed, green line = trail from parking lot on Cushman Road



East Leverett Meadow													
Boundary and Photo Reference													
date	description	latitude	longitude	monuments	angle (degrees) from previous point	length (feet) from previous point	line marked by	other descriptors	boundary confidence?	recommendations	habitat, vegetation, geology?	photo # (ELM Boundary Lines, updated 2011)	photo date (see photo log baseline)
6/25/2011	Cushman SE corner	42.4372	-72.4860	stone, possibly damaged stone bound no post found (maple tree)	352deg	334	boundary signs and red paint	trail swings on to KCR land	high	uncover marker annually	parking area, trail, pine woods	1a, 1b	1a. 9/1/2006, 2b. 6/24/2011
6/25/2011	Cushman SW corner west line with Cramer to mid-stream	42.437063	-72.48673	nothing mid-stream	road edge	200	edge of road		high		parking area	2a, 2b	6/25/2011
6/25/2011	down mid-stream to Sincut-Jones/Cramer corner	42.4379048	-72.487292	nothing mid-stream	344 deg	285	old electric fence posts	ends mid-stream, ip never placed	high	keep marked	pin	3a, 3b, 3c	6/24/2011
6/25/2011	west line with Sincut-Jones north line to pin in stone wall	need NW	need NW	pin	166	1326	fence and hedgerow	gate at access road	high		hedgerow at edge of meadow	NEED	
6/25/2011	line below tavern to fence post	42.4394855	-72.483668	ip at fence corner	174	487	fallen down fence posts	tangle of raspberries, vicious pant-eating plants	high	check pin not covered let grown into forest. If re-cleared discuss line?	woods, wetland was cleared by tavern users so growing up	7a, 7b	6/24/2011
6/25/2011	west jog in line to stone bound	42.4394803	-72.484267	stone bound	262	168	nothing, no difference in land use		high	keep marked	growing up field	8a	6/24/2011
6/25/2011	east line to Truehart/Williams-Seaman Corner	42.4389214	-72.484118	bent pin	185	212	old fence line		high	keep marked	meadow	9a, 9b	6/24/2011
6/25/2011	south line along meadow to KCR corner	42.4367	-72.48556	RGT-made white pin	93 deg	395	iron pin at Seaman-Williams/KCR corner (photo 10a)	along meadow edge	high	keep marked	meadow edge	10b, 10c	9/10/2006
6/25/2011	east line with KCR north of Roaring Brook	42.437986	-72.486245	no pin in middle of stream	184 deg	208	nothing, no change in land use		high	keep marked	unmowed field	11a	6/24/2011
6/25/2011	east line south from Roaring Brook to Cushman Rd	42.4374574	42.4374574	painted stone possibly stone bound hit by plow	174 deg	334	nothing, trail crosses at angle	hard to follow	high	keep marked	pine woods	11 b, 11 c	6/24/2011