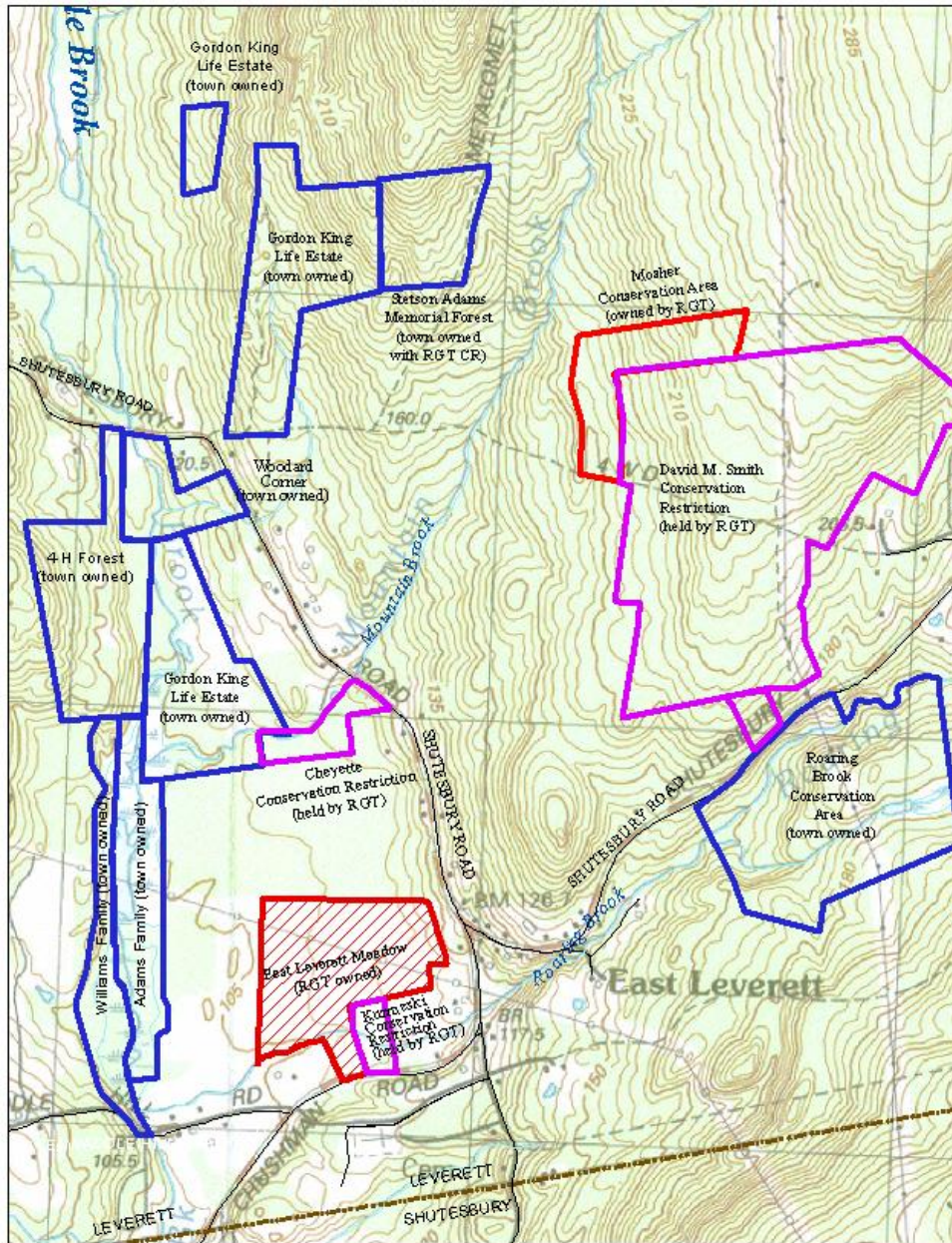


East Leverett Meadow													
Boundary and Photo Reference													
date	description	latitude	longitude	monuments	angle (degrees) from previous point	length (feet) from previous point	line marked by	other descriptors	boundary confidence?	recommendations	habitat, vegetation, geology?	photo # (ELM Boundary Lines, updated 2011)	photo date (see photo log baseline)
6/25/2011	Cushman SE corner	42.4372	-72.4860	stone, possibly damaged stone bound no post found (maple tree)	352deg	334 from middle of stream	boundary signs and red paint	trail swings on to KCR land	high	uncover marker annually	parking area, trail, pine woods	1a, 1b	1a. 9/1/2006, 2b. 6/24/2011
6/25/2011	Cushman SW corner	42.437063	-72.48673	nothing mid-stream	road edge	200	edge of road		high		parking area	2a, 2b	6/25/2011
6/25/2011	west line with Cramer to mid-stream	42.4379048	-72.487292	nothing mid-stream	344 deg	285	old electric fence posts	ends mid-stream, ip never placed	high	keep marked	pin	3a, 3b, 3c	6/24/2011
	down mid-stream to Sincut-Jones/Cramer corner	need SW	Need SW	???	follows stream	????	Roaring Brook		high		stream edge	NEED	
6/25/2011	west line with Sincut-Jones	need NW	need NW	pin	166	1326	fence and hedgerow	gate at access road	high		hedgerow at edge of meadow	NEED	
6/25/2011	north line to pin in stone wall	42.437986	-72.486245	pin	106 deg	1305	stone wall	also wire	high	check pin not covered let grown into forest. If re-cleared discuss line?	woods, wetland	6a, 6b	6/23/2011
6/25/2011	line below tavern to fence post	42.4394855	-72.483668	ip at fence corner	174	487	fallen down fence posts	tangle of raspberries, vicious pant-eating plants	high		cleared by tavern users so growing up	7a, 7b	6/24/2011
6/25/2011	west jog in line to stone bound	42.4394803	-72.484267	stone bound	262	168	nothing, no difference in land use		high	keep marked	growing up field	8a	6/24/2011
6/25/2011	east line to Truehart/Williams-Seaman Corner	42.4389214	-72.484118	bent pin	185	212	old fence line		high	keep marked	meadow	9a, 9b	6/24/2011
6/25/2011	south line along meadow to KCR corner	42.4367	-72.48556	RGT-made white pin	93 deg	395	iron pin at Seaman-Williams/KCR corner (photo 10a)	along meadow edge	high	keep marked	meadow edge	10b, 10c	9/10/2006
6/25/2011	east line with KCR north of Roaring Brook	42.437986	-72.486245	no pin in middle of stream	184 deg	208	nothing, no change in land use		high	keep marked	unmowed field	11a	6/24/2011
6/25/2011	east line south from Roaring Brook to Cushman Rd	42.4374574	42.4374574	painted stone possibly stone bound hit by plow	174 deg	334	nothing, trail crosses at angle	hard to follow	high	keep marked	pine woods	11 b, 11 c	6/24/2011

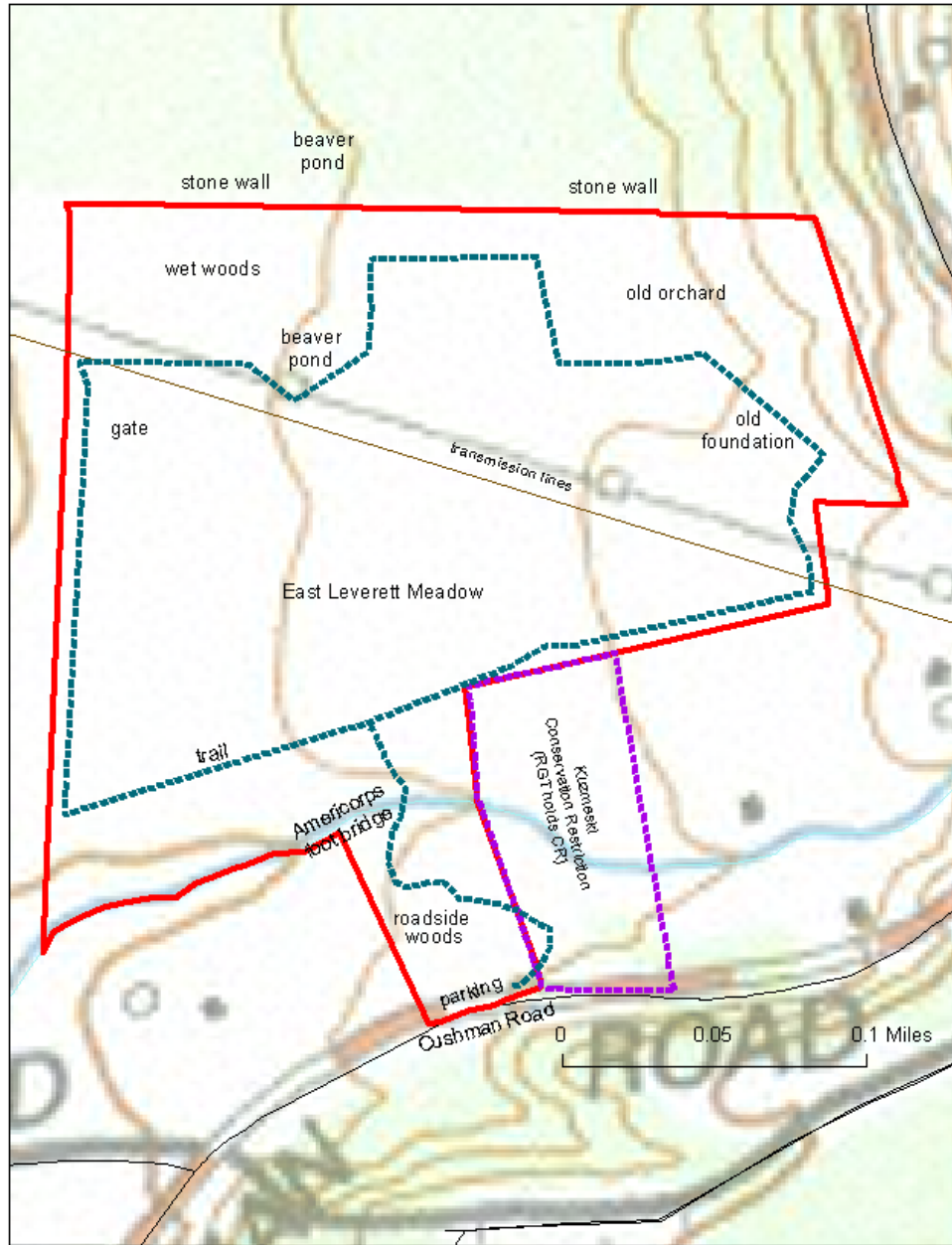


Protected Lands: East Leverett Area

- Town-owned Conservation Areas
 - RGT-owned Conservation Areas
 - RGT Conservation Restrictions (CRs)
- CR = owner has protected the property in perpetuity with help from a land trust.



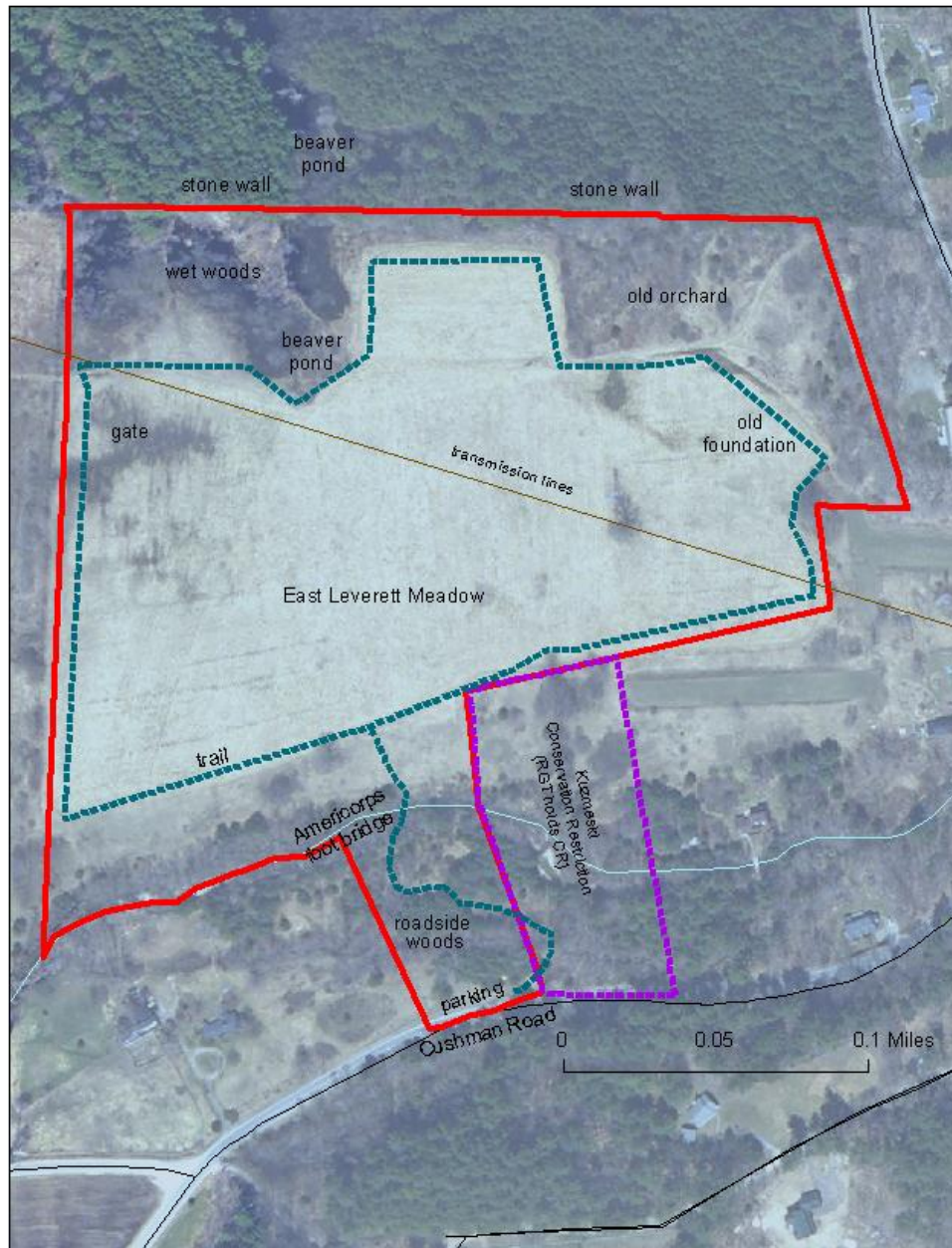
East Leverett Meadow



red line = ELM owned by Rattlesnake Gutter Trust (28 acres)
 Dotted purple line = Kuzmeski Conservation Restriction (3 acres)
 (land privately owned, with CR held by the Rattlesnake Gutter Trust)
 Double line = edge of meadow
 dashed, green line = trail from parking lot on Cushman Road



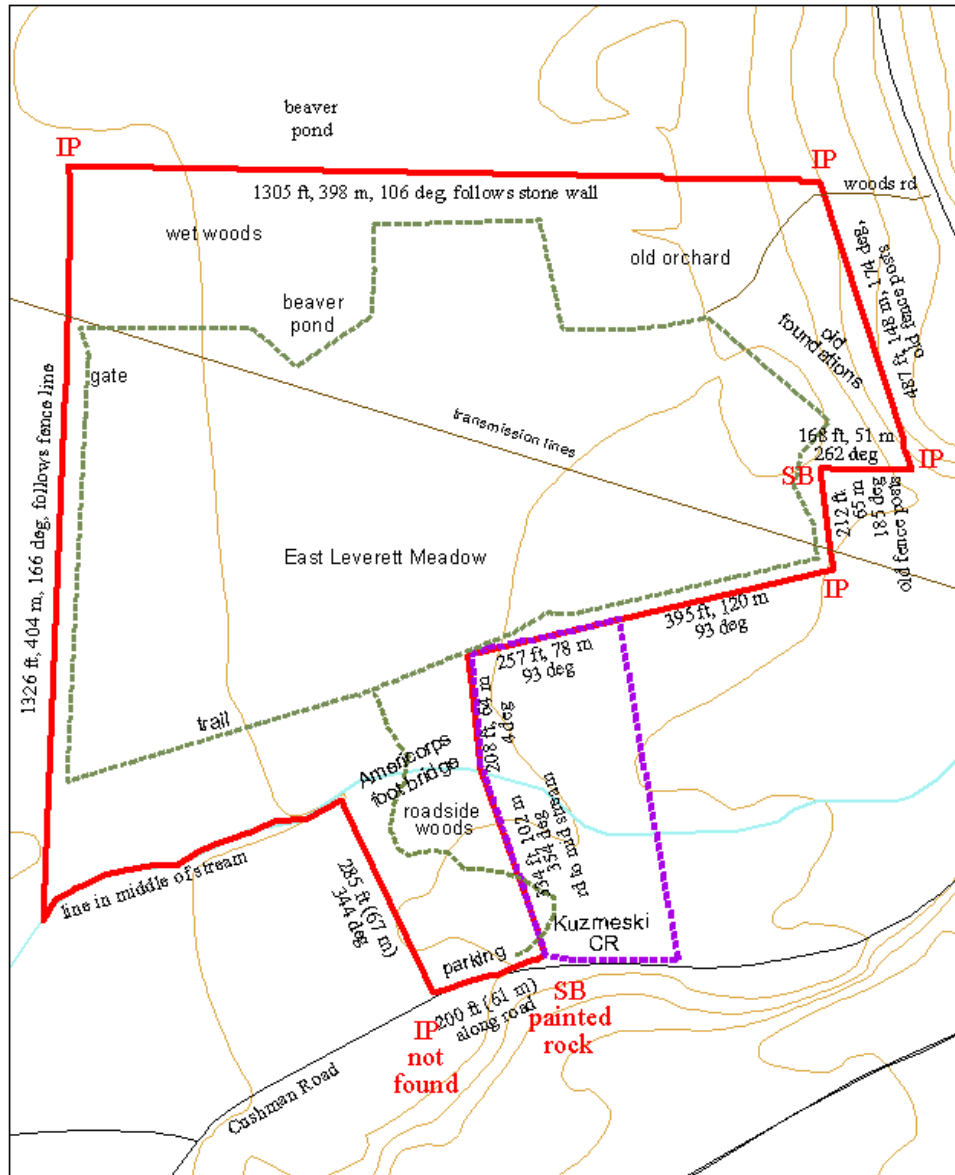
East Leverett Meadow



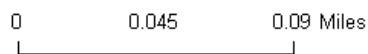
red line = ELM owned by Rattlesnake Gutter Trust (28 acres)
 Dotted purple line = Kuzmeski Conservation Restriction (3 acres)
 (land privately owned, with CR held by the Rattlesnake Gutter Trust)
 Double line = edge of meadow
 dashed, green line = trail from parking lot on Cushman Road

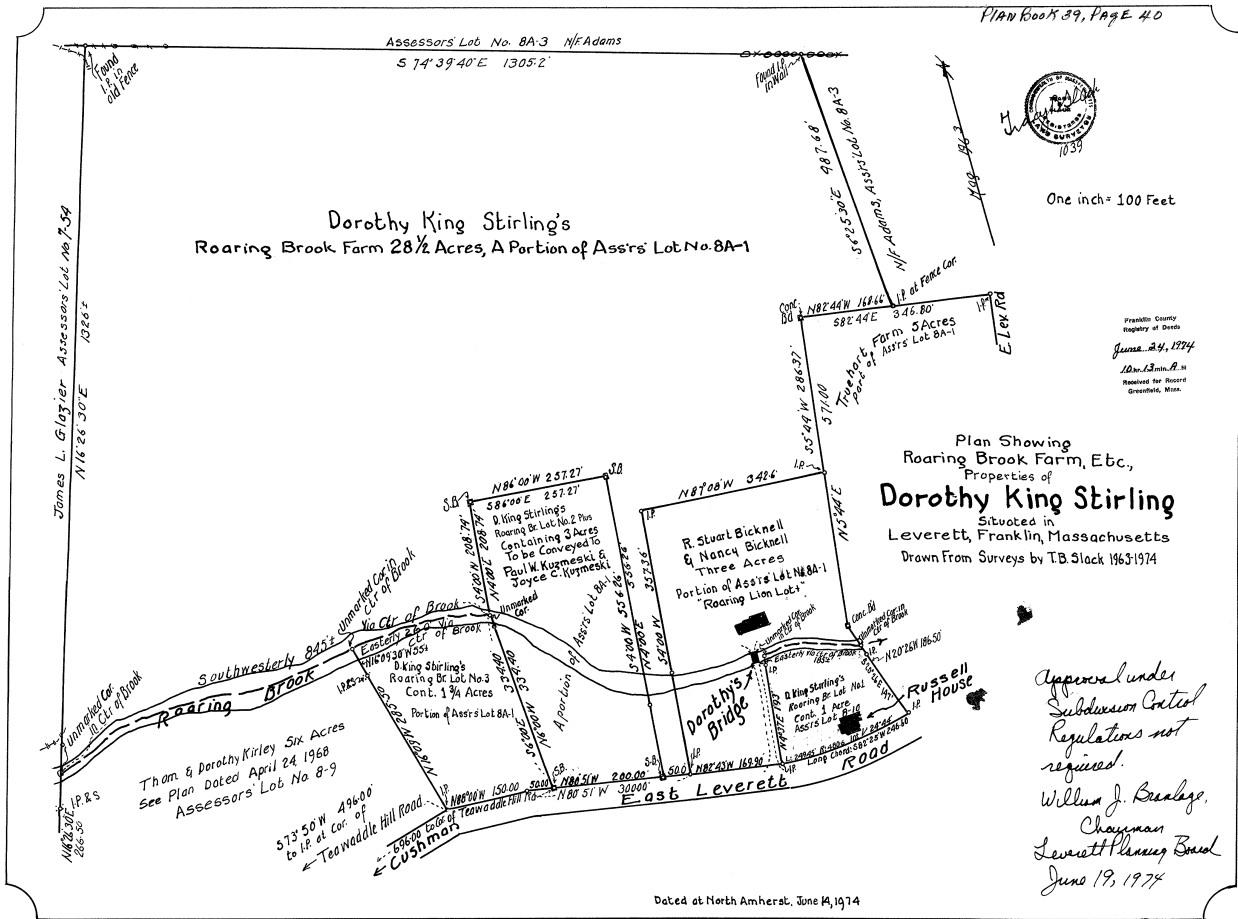


East Leverett Meadow

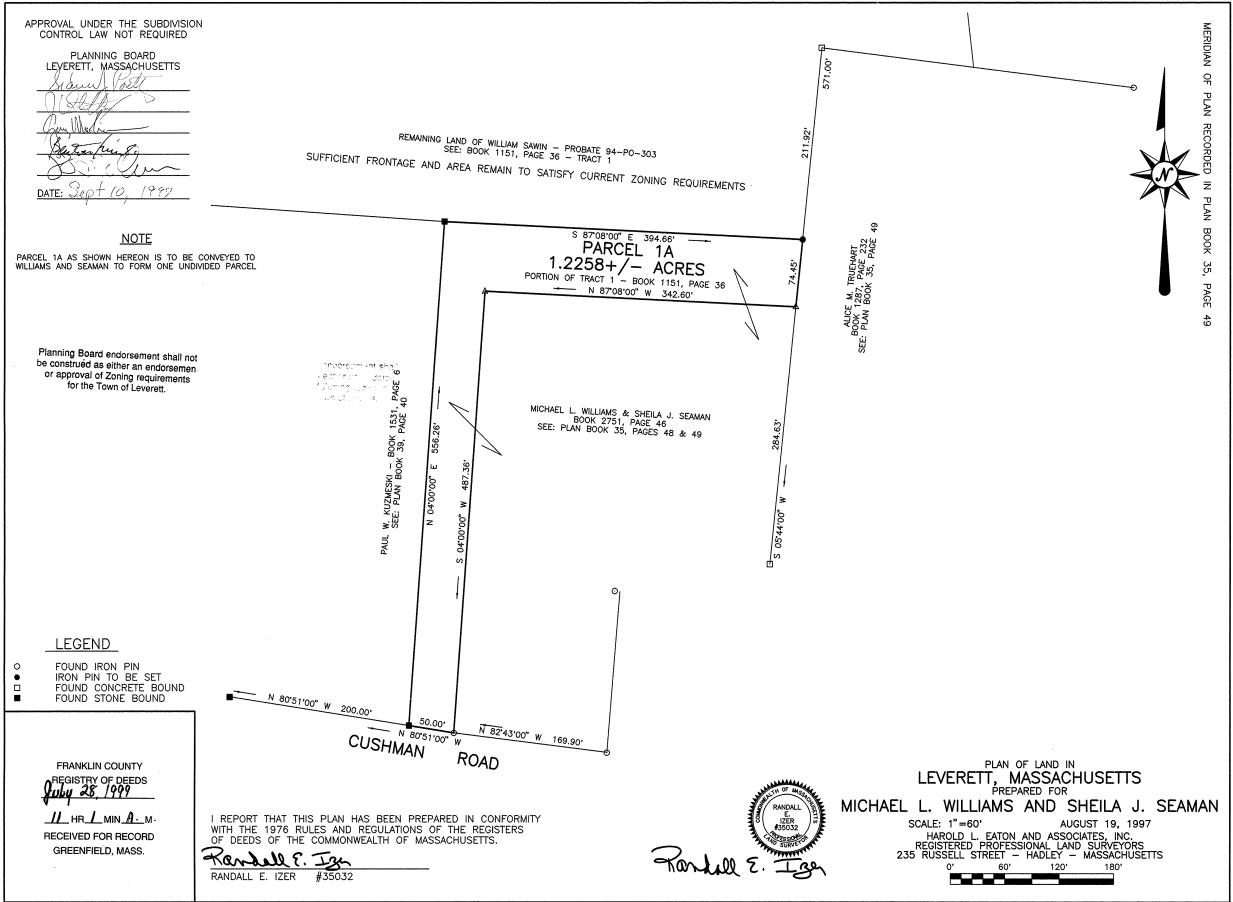


red line = ELM owned by Rattlesnake Gutter Trust (28 acres)
 Dotted purple line = Kuzmeski Conservation Restriction (3 acres)
 dashed, green line = trail from parking lot on Cushman Road

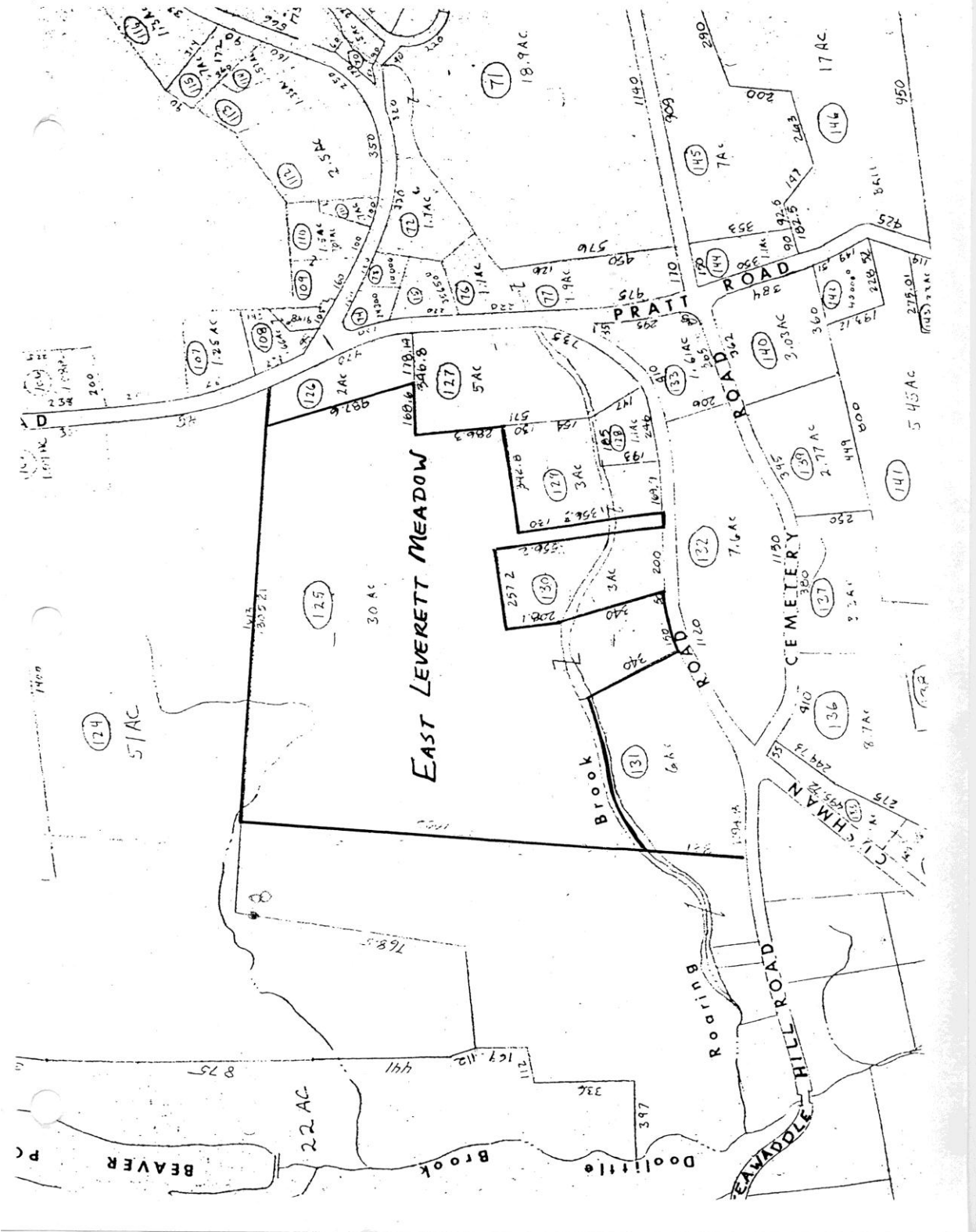




See survey on next page for changed lines in SE section



See previous map for rest of ELM.



Updated June 25, 2011

East Leverett Meadow														
Boundary and Photo Reference														
date	description	latitude	longitude	monuments	angle (degrees) from previous point	length (feet) from previous point	line marked by	other descriptors	boundary confidence?	recommendations	habitat, vegetation, geology?	photo # (ELM Boundary Lines, updated 2011)	photo date (see photo log baseline)	
6/25/2011	Cushman SE corner	42.4372	-72.4860	stone, possibly damaged	352deg	334	middle of stream	boundary signs and red paint	trail swings on to KCR land	high	uncover marker annually	parking area, trail, pine woods	1a, 1b	1a. 9/1/2006, 2b. 6/24/2011
6/25/2011	Cushman SW corner	42.437063	-72.48673	stone bound no post found (maple tree)		200	road edge	edge of road		high		parking area	2a, 2b	6/25/2011
6/25/2011	west line with Cramer to mid-stream	42.4379048	-72.487292	nothing mid-stream	344 deg	285		old electric fence posts	ends mid-stream, ip never placed	high	keep marked	pin	3a, 3b, 3c	6/24/2011
	down mid-stream to Sincut-Jones/Cramer corner	need SW	Need SW	???	follows stream	????		Roaring Brook		high		stream edge	NEED	
6/25/2011	west line with Sincut-Jones	need NW	need NW	pin	166	1326	fence and hedgerow	gate at access road		high		hedgerow at edge of meadow	NEED	
6/25/2011	north line to pin in stone wall	42.437986	-72.486245	pin	106 deg	1305	stone wall	also wire		high	check pin not covered	woods, wetland	6a, 6b	6/23/2011
6/25/2011	line below tavern to fence post	42.4394855	-72.483668	ip at fence corner	174	487	fallen down fence posts	tangle of raspberries, vicious pant-eating plants		high	let grown into forest. If re-cleared discuss line?	was cleared by tavern users so growing up	7a, 7b	6/24/2011
6/25/2011	west jog in line to stone bound	42.4394803	-72.484267	stone bound	262	168		nothing, no difference in land use		high	keep marked	growing up field	8a	6/24/2011
6/25/2011	east line to Truehart/Williams-Seaman Corner	42.4389214	-72.484118	bent pin	185	212		old fence line		high	keep marked	meadow	9a, 9b	6/24/2011
6/25/2011	south line along meadow to KCR corner	42.4367	-72.48556	RGT-made white pin	93 deg	395		iron pin at Seaman-Williams/KCR corner (photo 10a)	along meadow edge	high	keep marked	meadow edge	10b, 10c	9/10/2006
6/25/2011	east line with KCR north of Roaring Brook	42.437986	-72.486245	no pin in middle of stream	184 deg	208		nothing, no change in land use		high	keep marked	unmowed field	11a	6/24/2011
6/25/2011	east line south from Roaring Brook to Cushman Rd	42.4374574	42.4374574	painted stone possibly stone bound hit by plow	174 deg	334		nothing, trail crosses at angle	hard to follow	high	keep marked	pine woods	11 b, 11 c	6/24/2011

ELM Boundary Lines: Updated June 25, 2011

Cushman Road Corners

1. SE corner of property

corner of Cushman Road, ELM and Kuzmeski CR 1974 King survey (Franklin County Deeds, Plan Book 39, page 40) shows "SB" (Stone Bound.) All we have found is a stone which might be the stone bound damaged by plowing. It is painted red.

42.43720536, -72.48601601



1a. bending over stone, 9/1/2006



1b. painted stone, 6/24/2011

2. SW corner of property

The line follows the road 200 feet to the corner with corner with Cushman Rd, ELM, and the Cramer property. The 1974 King survey shows IP which we have never found. Chet Cramer has planted a line of maples on his property. The eastern most appears to be at the corner. He also had an electric fence which matches the measurements/angle of the line to the stream so this tree could be taken as the corner. Both pictures taken 6/25/2011.

42.43706295,



2a. Maple tree on corner looking north



2. Same tree looking east

West Boundary Lines

3. Cushman Road to Roaring Brook

The line between Cushman Road and the middle of Roaring Brook (285 feet, 344 degrees), runs along the edge of Chet Cramer's property. He has previously had an electric fence along the first part of the line and so it is easy to follow. According to the 1974 King Survey, there never was a marker placed in the middle of the stream (no surprise). All 3 pictures taken 6/24/2011



3a. from corner maple looking north



3b. on line, Bill Wilson standing by stream



3c. Looking south to line from the north side. If line were extended north beyond the middle of the stream it would be to the west of the large Shagbark Hickory, coming out almost exactly at the 2 bluebird boxes.

42.43790475 -72.48729232 (taken on south side, not mid-stream)

LAT/LONG

4. Line down the middle of Roaring Brook to the ELM, Cramer, Sincuk/Jones corner

Note: need to check this with Sincuk/Jones when they return this next month, **will then put in pictures. (Decided to wait for leaves to fall.)**

LAT/LONG

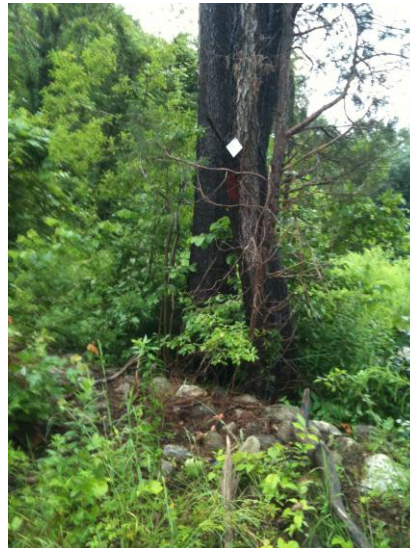
5. West line to ELM, Sincuk/Jones, Adams corner. The boundary line follows the fence line (1326 feet, 404m, 166 deg). The end of the line, marked by Sincuk/Jones fences and the Adams stone wall, is in a very wet area. The iron pin has been found in the past.

Need new pictures, film picture hard to figure out where pin is, what it looks like

LAT/LONG

North Boundary Line

6. North boundary is along Adams property and is marked with a stone wall (1305 ft, 398 m, 106 deg.). The corner of ELM/Adams/"the tavern" is marked by a pin in the stone wall (as noted in the 1974 King survey). The woods road leading from Shutesbury Road down to the meadow is just south (inside ELM land) at this point. Recently a breach was made in the stone wall for the Adams logging. Both pictures taken 6/23/2011



6a. (above) View from Adams land
6b. (right) Stake in stone wall under tree with white RGT tag. 42.43798597, -72.48624483

East Boundary Line

7. From ELM/Adams/tavern stone wall to corner just below tavern (487 ft, 148 m, 174 deg.). Because this area used to be kept open as a picnic area for folks living at the tavern, it is a tangle of raspberry and bittersweet. Very difficult to walk through. The line does follow an old fence line, which means mostly fence posts about to fall down. (It is easier to find this and the next corner starting in the SE corner and walking north.) The 1974 King survey shows "IP in Fence Corner" and that it exactly where it is. Both pictures were taken 6/24/2011. 42.43948549, -72.48366849



7a. (left) Iron pin protected by poison ivy
 7b. (above) Looking along line north from IP. Note scars on left sides of trees from old wire fencing. (Orange object is trash, photographer is standing on pin.)

8. West jog. The eastern boundary line then jogs west bordering the Truehart property to a Stone Bound well-buried in a stand of trees and shrubs (168 ft, 51 m, 262 deg). There is no old fence line or land use change – both sides have been mowed by the Trueharts. June 24, 2011 is the first time we have found this stone bound. And then thought we had mis-measured because there was no change in land use. 42.43948038, -72.48426737



8a. Stone Bound (cement) shows on the 1974 King Survey. Another picture should be taken in the fall – one taken now would just show a wall of trees.

To next iron pin (212 ft, 65m, 185 deg). This final section of the eastern boundary borders the Truehart property following an old fence line - sometimes fence, often just fence posts. The iron pin had been seen briefly years ago and was found by, literally, stumbling on it while measuring the distances. It is just north of the stand of aspen. 42.43892139, -72.48411843. Both pictures taken 6/24/2011.



9a. (above) Iron Pin at ELM, Truehart, Williams/Seaman corner. (mowing is hard on pins)

9b. (right) pin in front of backpack, looking to fence post and Truehart home. Aspen is just to the right of the photograph.

10. Southern boundary along Williams/Seaman and the Kuzmeski Conservation Restriction. The line is a straight line (93 deg). It is 395 ft, 120 m along Williams/Seaman and 257 ft, 78 m along Kuzmeski CR. (Note, this is the only part of the 1974 King survey that is no help. For this section, use a subsequent survey done for Williams and Seaman in 1997 (Franklin County Deeds, Plan Book 101, page 44). The corner between Williams/Seaman and Kuzmeski is marked by an iron post and fence post. (Not needed for the ELM property, but important for monitoring the Kuzmeski CR.)



10a. IP at corner of ELM, Williams/Seaman, Kuzmeski CR. September 7, 2006

42.4367 -72.48556

The ELM/Kuzmeski CR is at the edge of the ELM mowed field and the sometimes-mowed field closer to Roaring Brook. Both pictures taken Sept 10, 2006



10b. Looking east to white pipe marking ELM/Kuzmeski corner.

10c. Looking south from white pipe toward Roaring Brook.

42.43787 -72.48648

11. East Boundary Line along Kuzmeski CR. The first section of the line (see 10c above) goes through a field and then a line of trees (208 ft, 64 m, 184 deg). In the middle of the stream (no boundary marker), the angle changes (174 deg) and continues 334 ft, 102 m to Cushman Road and the painted stone (see #1). It is this second section that is hard to follow because there is not land use change, in fact the trail into the meadow goes on to the CR. All 3 pictures taken 6/24/2011.



11a. View from the north side of Roaring Brook looking south to the flag/line. The Americorps Bridge is out of view to the right (downstream).

42.43798597, -72.48624483



11b. ELM/Kuzmeski line (white tape) as it crosses the trail just east of the large ELM sign.

42.43745741, -72.48626025



11c. ELM/Kuzmeski line (white tape and backpack) as it crosses the trail just north of the parking area.

Thus endeth the tour of the East Leverett Meadow Boundaries. Special thanks to Bill Wilson, Steve Weiss, Sheila Seaman, and Gwyn Mitchell for their on-going help with this property.

Note to readers: feet, meters and degrees are given to nearest whole number. If more precise measurements are needed, consult the surveys referenced in the text.

This is a draft. One corner (south Sincuk/Jones) is unknown. There is not a good picture of north Sincuk/Jones and that lat/long needs to be checked. Both of those can be done in July. Some additional leaf-off pictures would be nice.

Mary Alice Wilson, 6/25/2011