

Property: East Leverett Meadow Year of this Report: 2012
Owner: name, address, phone, email if relevant (Also name of local contact if relevant.): <i>(skip if owned)</i>
Date owner invited to monitoring <i>(skip if owned)</i>
Date and recommendations from last year's monitoring: June 23, 2011 Purpose of the monitoring was to mark the ELM boundary with the RGT metal tags – most of which we were able to do. We wanted to talk with Joe Sincuk about his line by the stream.
Date of this year's monitoring: October 27, 2012
Participants: Steve Weiss, Mary Alice Wilson
Brief description of route taken (also draw on map): We did the neighboring Kuzmeski Conservation Restriction just before this monitoring. We therefore started at the meadow side of the CR and went counterclockwise. (Below the tavern Steve braved the briars along the line; Mary Alice (wearing the gps unit) took the easier trail.) We did not walk the northern boundary, but kept to the path until we braved the briars at the NW corner (see pictures).
Describe any man-made alterations (include on map, add photograph or "none observed"): none observed
Describe any natural alterations (include on map, add photographs or "none observed"): none observed
Describe any interactions (on day of site visit or in past year) with landowner or others having use of the land:

Members of the ELM Management Committee (Steve, Mary Alice, Sheila Seaman, and Gwyn Mitchell) are often on the property.

There have been 3 recent events bringing folks to the meadow: Julie Collier released 2 Kestrels August 5; she released another August 26, and RGT hosted a 15th annual celebration on October 21. Each event brought 15-20 people to the meadow and provided an opportunity to introduce them to the meadow.

The Leverett Trails Committee has completed the eastern side of the trail network (from Woodard's Corner to ELM, has built a bridge to the western side and is completing the Teawaddle Hill Farm trails (that will complete the western side of the network) this fall. The effect is to bring many more walkers/hikers/joggers to the meadow. A mailbox with information about ELM is now in place where the trail from Cushman Road meets the meadow and the parking lot was improved by the town (as part of their in kind contribution to the East Leverett Trails Grant from DCR.

Describe any changes in use being planned (change of ownership, land use, etc.):

None. The meadow was mowed at the end of October in keeping with the plan to mow in October to protect wood turtles.

List observations, comments, management needs, information requests, areas needing discussion or review:

1. For future monitoring: lines and corners

- a. The "bent iron pin" at the SE corner of the meadow disappears each year into the grasses. next time it is found, we need to add an extra (higher) pipe.
- b. We were unable to find the pin at the NW corner – if still visible it is well protected by briars (see pictures). Since it is at the corner of the Sincuk wire fence and the Adams stone wall, it is not critical to find it.
- c. The SW corner is in mid-stream of Roaring Brook and does not have a pin. We painted a tree at what we hoped with the accurate extension of the west line (fence line). Joe Sincuk has been asked to check it to see if it is right. We will move it if he recommends doing that. (See picture.)

2. Stewardship Plan for 2012. Plan includes four goals:

- a. Routine management (mowing field and trail, annual monitoring, monthly stewardship),
- b. Enhance habitat for present and new species: collect data, increase planting of pollinator plants,
- c. Encourage use by the public: collect data, offer programming, build trail spur to the old foundations on the north line,
- d. Benefit RGT (not just use financial and time resources): collect information, keep costs as low as possible,

List any needed follow-up:

For future monitoring: Follow up on the pin on the SE corner and the marking of the SW corner.

Enhanced maintenance: cut trail to stone foundation, move bird boxes closer to mowed trail, evaluate bridge structure

For stewardship plan: see plan

Suggestions for next year's monitoring team?

Dress for briars.

Signed:

Date signed:

..... Date report to RGT Board Date copy sent to owner date copy given for archive

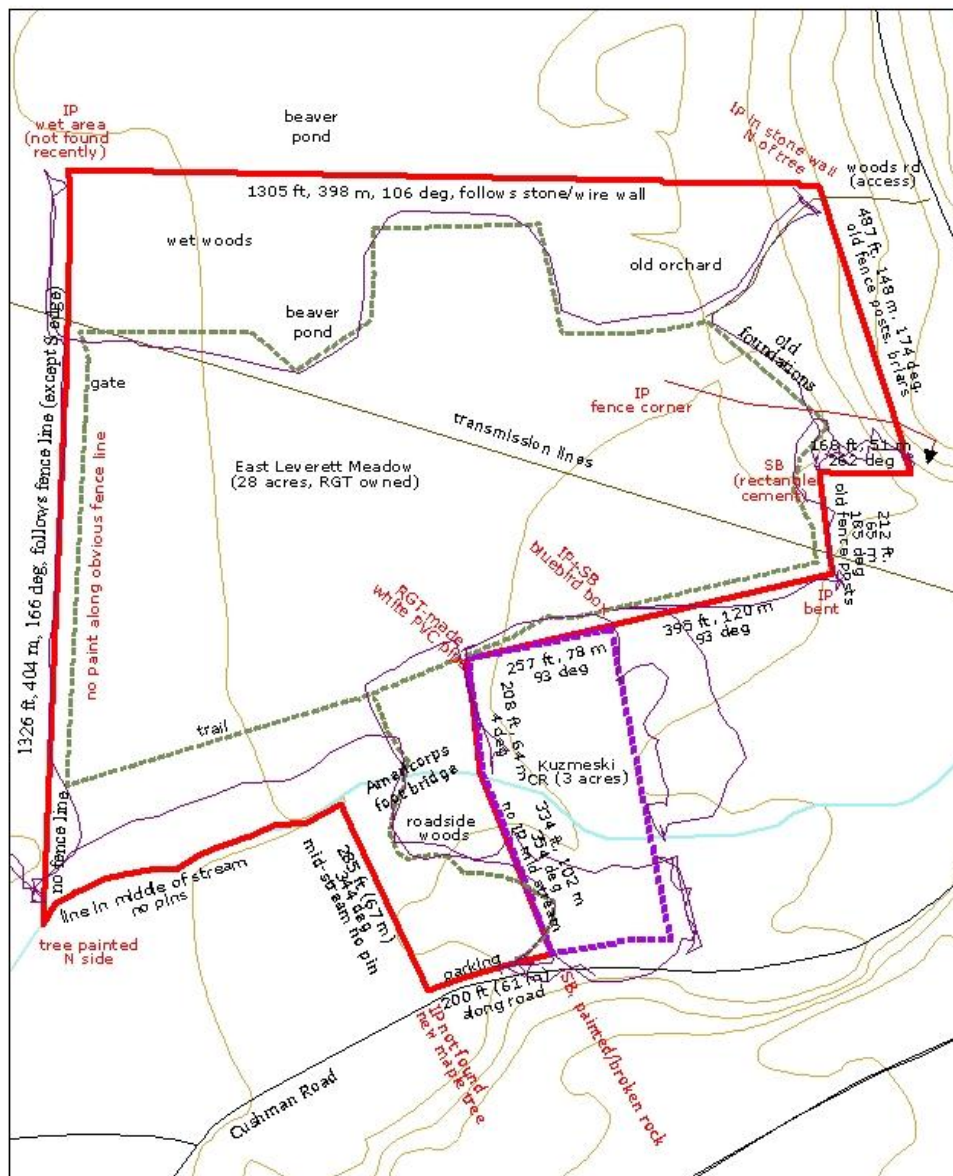


Why are both the photographer and Steve on hands and knees? See photograph to the right. (NW corner of ELM – no pin found.)

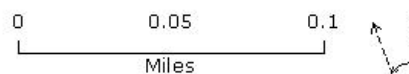
Triple-dot corner paint at SW corner of ELM. Corner with Cramer (across stream) and Sincuk-Johnson (to the right) is in the middle of the stream. There is no pin. Joe Sincuk has been asked to confirm location of the corner.



East Leverett Meadow Boundaries for Monitoring



IP - iron pin (surveyor's pin)
 SB = stone bound
 lines and corners painted red
 some RGT metal tags



ELM Monitoring Oct. 27, 2012